

ORDER REFERENCE

PROJECT:                    HOMEWAITER 120#  
                                   MACHINE ABOVE

TYPICAL DRAWING FOR REFERENCE ONLY.  
 NOT TO BE USED FOR CONSTRUCTION

SPECIFICATIONS

MODEL:    HOMEWAITER (COLLAPSIBLE GATE W/SWING TYPE DOOR)

LANDINGS: 2

CODE(S): 4

CAPACITY: 120

SPEED: 28 F.P.M.


SUSPENSION 1 WIRE ROPE:  
 MEANS:            5/32 AIRCRAFT CABLE

CAR CONSTRUCTION: AVAILABLE IN STAINLESS STEEL,  
 PAINTED STEEL OR HARDWOOD VENEER

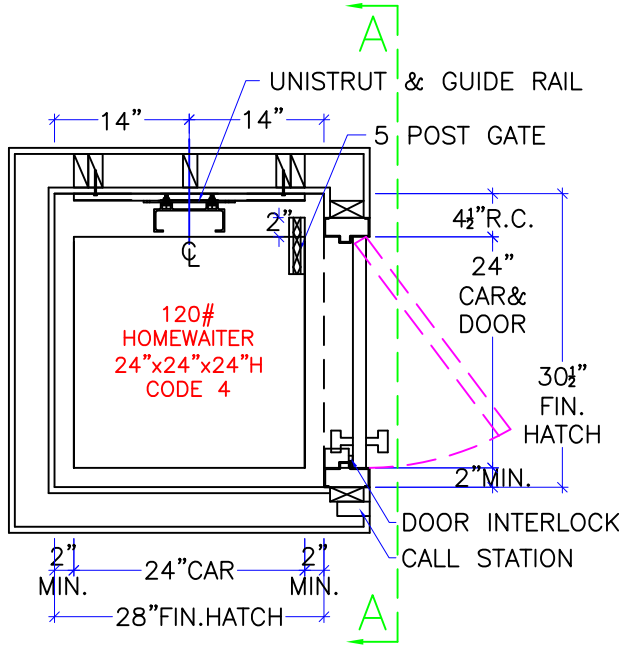
NOTE: ALL MANUFACTURER SUPPLIED CAR AND EQUIPMENT OPTIONS ARE  
 NOTED ON THE CONFIRMING ORDER SHEET.

DISCLAIMER: ONCE DRAWINGS HAVE BEEN APPROVED,  
 SIGNED AND WITHIN 5 DAYS OF PRODUCTION, THE  
 CUSTOMER WILL BEAR ALL RESPONSIBILITY AND LIABILITY  
 OF FINISHED UNIT.

TYPICAL DRAWING  
 NOT TO BE USED FOR CONSTRUCTION

DWG VIEW COVER SHEET		PART NUMBER TYPICAL			REV.DATE - - -	
 DRAWING TITLE HW120 CODE 4 - MR ABOVE		DRAWING NO. HW-001				
PAGE: 1/4	DRAWN BY: J PETTYJOHN	DWG. DATE 11/20/15	JOB OR APP.# -	DEALER P.O.# -	DWG. SCALE 1:24	REV.LEVEL(1-3) -

TYPICAL DRAWING  
NOT TO BE USED FOR CONSTRUCTION



SEE "LOAD CAPACITY CALCULATOR"  
FOR OTHER POSSIBLE  
HW 120# CAB DIMENSIONS

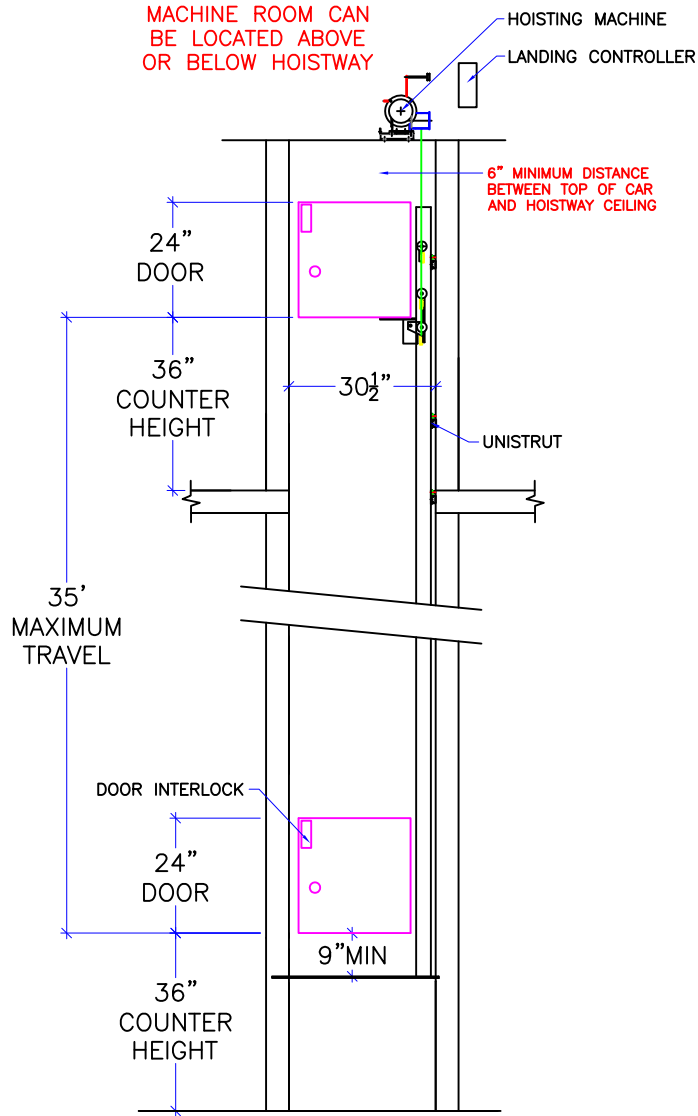
NOTE:  
ALL HOISTWAY CONSTRUCTION MUST COMPLY WITH NATIONAL, STATE,  
AND LOCAL CODES. HOISTWAY MUST BE PLUMB AND STRAIGHT  
FROM TOP TO BOTTOM WITH NO PROJECTIONS INTO THE HOISTWAY.

**NOTICE TO ELECTRICAL CONTRACTOR:**  
 -ALL ELECTRICAL WIRING MUST BE DONE BY A JOURNEYMAN MECHANIC AND MUST MEET ALL NATIONAL, STATE, AND LOCAL CODES.  
 -BRING (2) #12 W/GND FROM RESIDENCE INCOMING POWER PANEL 20AMP GFI BREAKER(120V, NEUTRAL, GROUND)TO THE MACHINE ROOM  
 -REQUIRED LOW VOTAGE WIRING IS SUPPLIED BY MANUFACTURER. ALL EXTENSIONS ADDITIONS, ETC. SHALL BE DONE WITH THE SAME SIZE  
 AND TYPE OF WIRE AS ORIGINALLY SUPPLIED BY THE MANUFACTURER.  
 -ALL MEANS FOR ACCESS TO EQUIPMENT SHALL BE PROVIDED WITH A LOCK. ALL SHAFT DOORS MUST BE INTERLOCKED.

DWG VIEW HOISTWAY LAYOUT		PART NUMBER TYPICAL		REV.DATE	
DRAWING TITLE HW120 CODE 4 - MR ABOVE		DRAWING NO. HW-001		-	
PAGE: 2/4	DRAWN BY: J PETTYJOHN	DWG. DATE 11/20/15	JOB OR APP.# -	DEALER P.O.# -	DWG. SCALE 1:24
					REV.LEVEL(1-3) -



**MINIMUM OVERHEAD NOTE:**  
 OVERHEAD MAY BE REDUCED TO MINIMUM  
 OF 4" ABOVE TOP OF CAR BY LOWERING  
 SHEAVE ON RAIL.

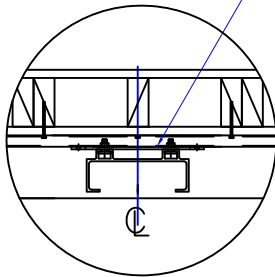


TYPICAL DRAWING  
 NOT TO BE USED FOR CONSTRUCTION

DWG VIEW		SECTION A-A		PART NUMBER		TYPICAL		REV. DATE	
DRAWING TITLE		HW120 CODE 4 - MR ABOVE		DRAWING NO.		HW-001		-	
PAGE:		DRAWN BY:		DWG. DATE		JOB OR APP.#		DEALER P.O.#	
3/4		J. PETTYJOHN		11/20/15		-		-	
						DWG. SCALE		REV. LEVEL(1-3)	
						1:24		-	



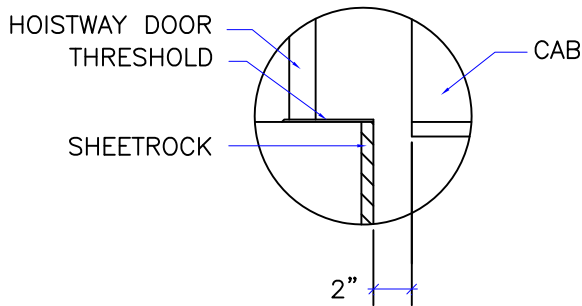
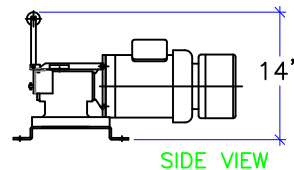
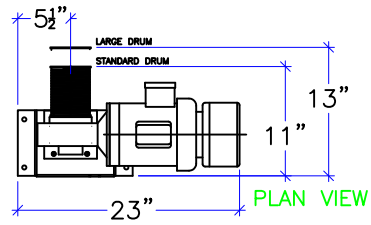
UNISTRUT AND  
GUIDE RAIL



UNISTRUT WIDTH SHALL BE  
EQUAL TO WIDTH OF CAR.

RAIL DETAIL

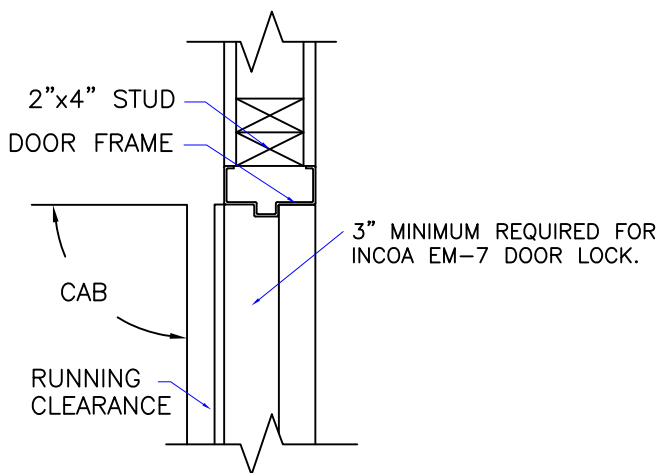
SEE "LOAD CAPACITY CALCULATOR"  
FOR OTHER POSSIBLE  
HW 120# CAB DIMENSIONS



DOOR SILLS TO BE INSTALLED BY G.C.  
AFTER LIFT SUPPLIER HAS INSTALLED  
A RUNNING PLATFORM.

SILL DETAIL

1. MACHINE ROOM SIZE REQUIREMENTS  
MAY CHANGE WITH TRAVEL DISTANCE
2. MACHINE ROOM CAN BE LOCATED  
ABOVE OR BELOW HOISTWAY
3. SHEAVE COMBINATIONS  
WILL CHANGE WITH ALTERNATE  
MACHINE ROOM LOCATIONS



DOOR FRAME DETAIL

RAIL FORCES:

78 LBS. PULL OUT  
400 LBS. (STATIC) VERTICAL LOAD  
800 LBS. (IMPACT) VERTICAL LOAD

REACTIONS ON DIRECTIONAL SHEAVES:

200 LBS. (STATIC)  
400 LBS. (IMPACT)

MAXIMUM PULLOUT FORCE ON GEARBOX ANCHOR: 281 LBS.

TECHNICAL DATA

DWG VIEW

DETAILS, DATA, CODES

PART NUMBER

TYPICAL

REV.DATE

DRAWING TITLE

HW120 CODE 4 - MR ABOVE

DRAWING NO.

HW-001

-

-

-

PAGE:  
4/4

DRAWN BY:  
J PETTYJOHN

DWG. DATE  
11/20/15

JOB OR APP.#  
-

DEALER P.O.#  
-

DWG. SCALE  
1:24

REV.LEVEL(1-3)  
-