

## ORDER REFERENCE

**PROJECT:** 500# DUMBWAITER  
MR BELOW

TYPICAL DRAWING FOR REFERENCE ONLY.  
NOT TO BE USED FOR CONSTRUCTION

## SPECIFICATIONS

**MODEL:** DW-500 (BI-PARTING DOORS AND GATES)

**LANDINGS:** 2

**OPENING:** SOUTH

**CAPACITY:** 500#

**SPEED:** 50 F.P.M.

**SUSPENSION MEANS:** 1 WIRE ROPE 5,400 LBS. EHS  
STEEL 1/4" x 8 x 19 IWRC

**CAR CONSTRUCTION:** STAINLESS STEEL  
OR PAINTED STEEL

NOTE: ALL MANUFACTURER SUPPLIED CAR AND EQUIPMENT OPTIONS ARE NOTED ON THE CONFIRMING ORDER SHEET.

DISCLAIMER: ONCE DRAWINGS HAVE BEEN APPROVED, SIGNED AND WITHIN 5 DAYS OF PRODUCTION, THE CUSTOMER WILL BEAR ALL RESPONSIBILITY AND LIABILITY OF FINISHED UNIT.


PLEASE REFER ANY QUESTION TO YOUR SALES REPRESENTATIVE

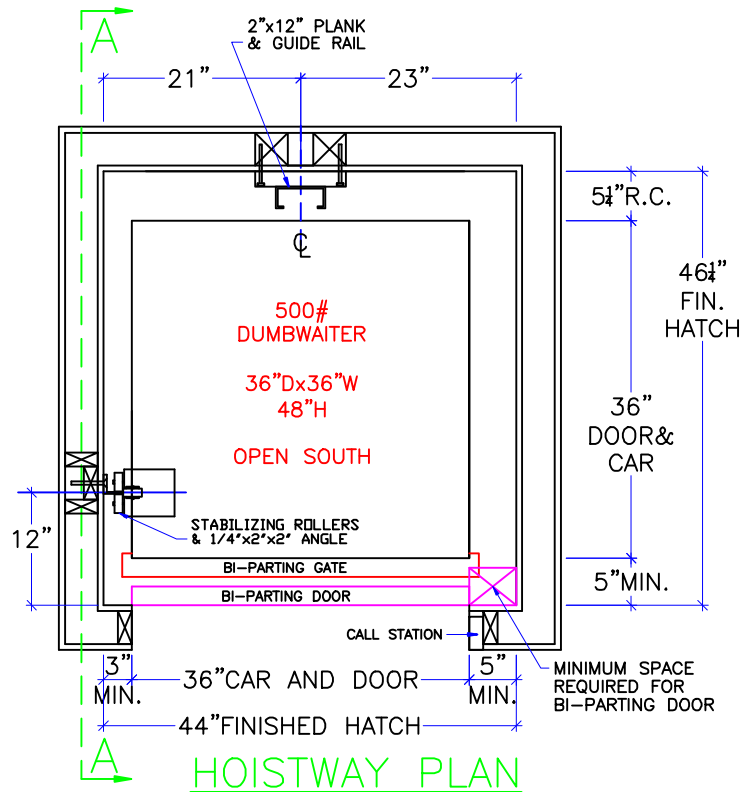
APPROVED

UNAPPROVED

\_\_\_\_\_  
SIGNATURE

\_\_\_\_\_  
DATE

<b>DWG VIEW</b>	<b>PART NUMBER</b>	<b>REV. DATE</b>
COVER SHEET	TYPICAL	-
 <b>DRAWING TITLE</b>	<b>DRAWING NO.</b>	-
DW 500 BI-PART OPEN SOUTH	DW-012	-
<b>PAGE:</b>	<b>DRAWN BY:</b>	<b>DWG. DATE</b>
1/4	B. BRATTEN	JAN. 2014
<b>JOB OR APP.#</b>	<b>DEALER P.O.#</b>	<b>DWG. SCALE</b>
-	-	1:24
<b>REV. LEVEL(1-3)</b>		-



SEE "LOAD CAPACITY CALCULATOR"  
FOR OTHER POSSIBLE  
DW 500# CAB DIMENSIONS

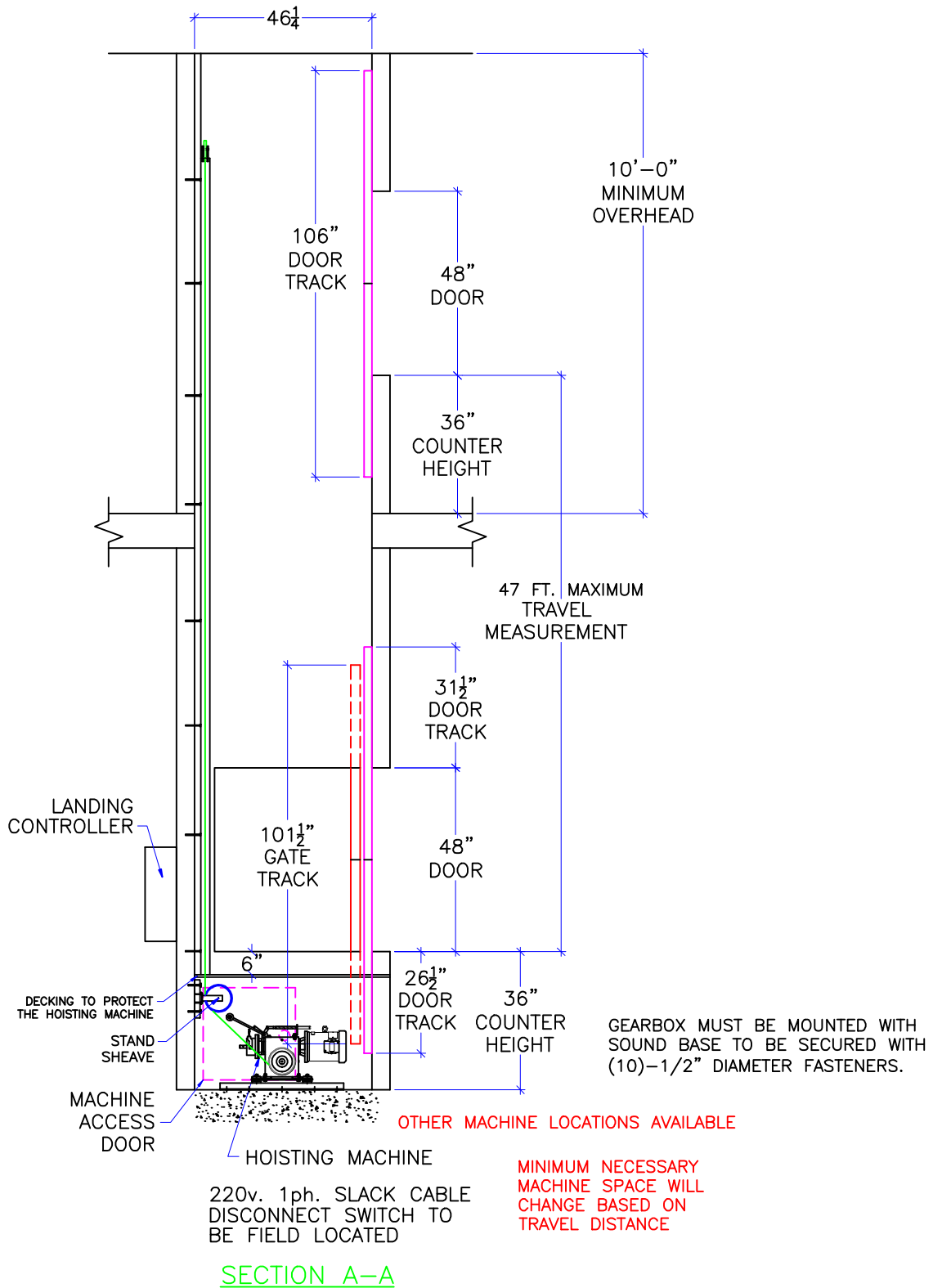
ALL HOISTWAY CONSTRUCTION MUST COMPLY WITH NATIONAL,  
STATE, AND LOCAL CODES. HOISTWAY MUST BE PLUMB AND  
STRAIGHT FROM TOP TO BOTTOM WITH NO PROJECTIONS INTO  
THE HOISTWAY.

**NOTICE TO ELECTRICAL CONTRACTOR:**

- ALL ELECTRICAL WIRING MUST BE DONE BY A JOURNEYMAN MECHANIC AND MUST MEET ALL NATIONAL, STATE, AND LOCAL CODES.
- BRING (3) #10 W/GND FROM RESIDENCE INCOMING POWER PANEL 30AMP BREAKER(240V, NEUTRAL, GROUND)TO THE MACHINE ROOM.
- BRING (2) #12 W/GND FROM RESIDENCE INCOMING POWER PANEL 20AMP GFI BREAKER(120V, NEUTRAL, GROUND)TO THE MACHINE ROOM.
- REQUIRED LOW VOTAGE WIRING IS SUPPLIED BY MANUFACTURER. ALL EXTENSIONS ADDITIONS, ETC. SHALL BE DONE WITH THE SAME SIZE AND TYPE OF WIRE AS ORIGINALLY SUPPLIED BY THE MANUFACTURER.
- ALL MEANS FOR ACCESS TO EQUIPMENT SHALL BE PROVIDED WITH A LOCK. ALL SHAFT DOORS MUST BE INTERLOCKED.

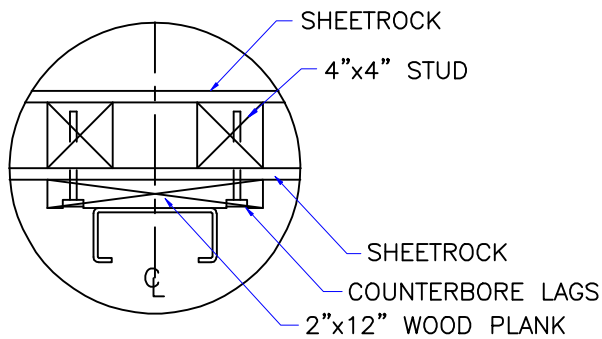
DWG VIEW		PART NUMBER		REV. DATE		
HOISTWAY LAYOUT		TYPICAL		-		
DRAWING TITLE		DRAWING NO.		-		
DW 500 BI-PART OPEN SOUTH		DW-012		-		
PAGE:	DRAWN BY:	DWG. DATE	JOB OR APP.#	DEALER P.O.#	DWG. SCALE	REV. LEVEL(1-3)
2/4	B.BRATTEN	JAN. 2014	-	-	1:24	-





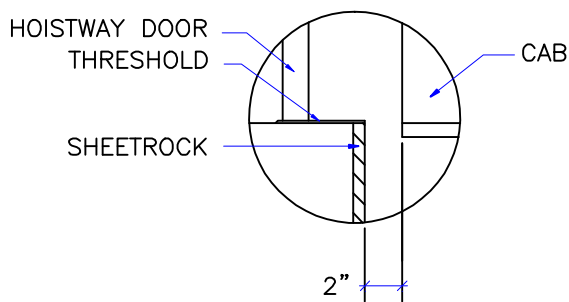
DWG VIEW		PART NUMBER		REV. DATE		
SECTION A-A		TYPICAL		-		
DRAWING TITLE		DRAWING NO.		-		
DW 500 BI-PART OPEN SOUTH		DW-012		-		
PAGE:	DRAWN BY:	DWG. DATE	JOB OR APP.#	DEALER P.O.#	DWG. SCALE	REV. LEVEL(1-3)
3/4	B. BRATTEN	JAN. 2014	-	-	1:24	-





NOTE:  
WHEN STUD AND SHEETROCK CONSTRUCTION IS USED ON THE GUIDE RAIL SUPPORT WALL 4"x4" STUDDING IS NEEDED BEHIND THE 2"x12" PLANK.

RAIL DETAIL



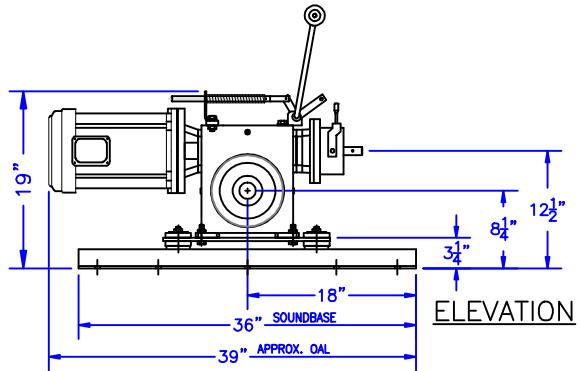
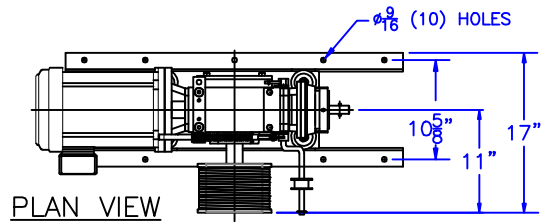
DOOR SILLS TO BE INSTALLED BY G.C. AFTER LIFT SUPPLIER HAS INSTALLED A RUNNING PLATFORM.

SILL DETAIL

FOR DOOR DETAILS  
SEE ATTACHED  
DRAWINGS

DOOR FRAME DETAIL

SEE "LOAD CAPACITY CALCULATOR"  
FOR OTHER POSSIBLE  
DW 500# CAB DIMENSIONS



1. MACHINE ROOM SIZE REQUIREMENTS MAY CHANGE WITH TRAVEL DISTANCE
2. MACHINE ROOM CAN BE LOCATED ABOVE OR BELOW HOISTWAY
3. SHEAVE COMBINATIONS WILL CHANGE WITH ALTERNATE MACHINE ROOM LOCATIONS

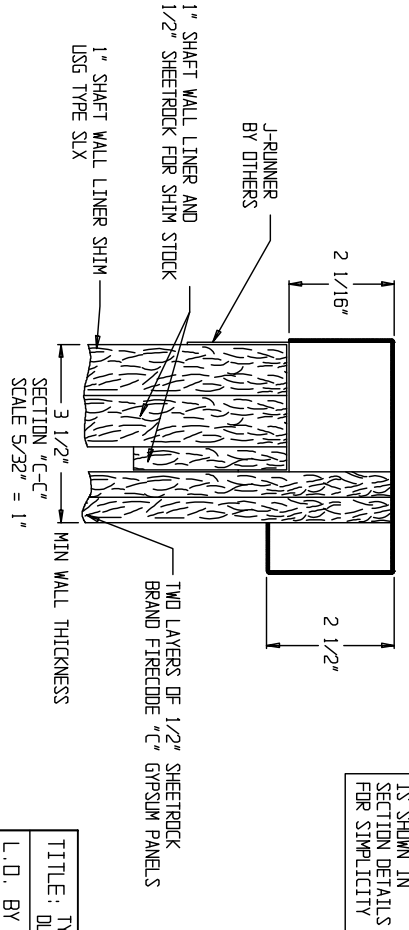
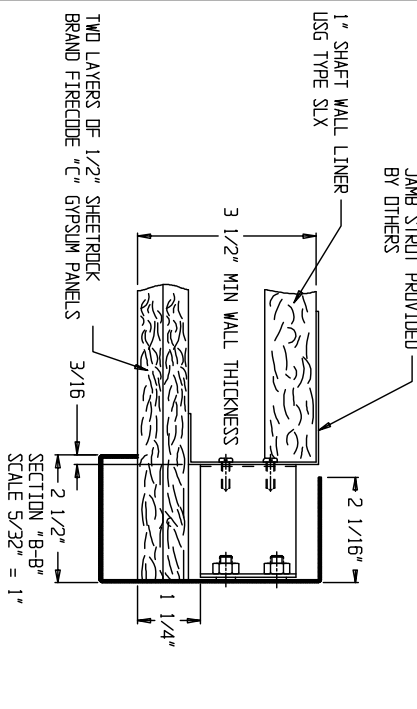
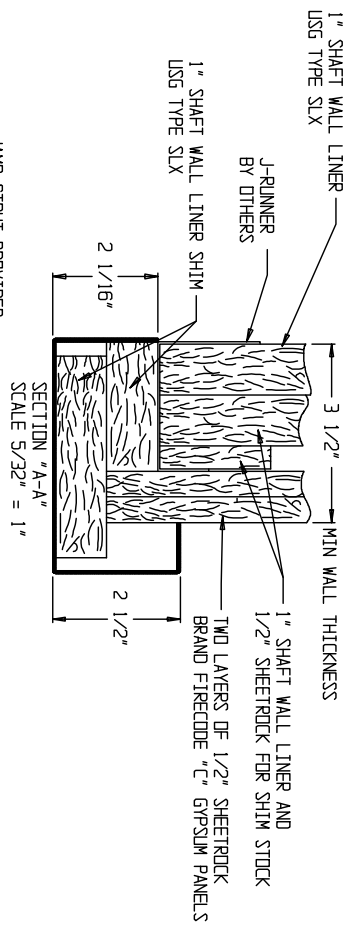
500# DUMBWAITER MACHINE DIMENSIONS

1. REACTIONS ON ALL SHEAVES AND MOUNTINGS  
STATIC = 1,100 LBS.  
IMPACT = 2,200 LBS.
2. RAIL FASTENING TO 2" x 12" PLANK  
#14 x 1 3/4" TYPE A S.M.S. RAIL IS PRE-DRILLED AT FACTORY.
3. BOLT FASTENING OF CAR TO TROLLEY  
1/2" - 13 x 2 1/2" SOCKET HD CAP SCREWS.

TECHNICAL DATA

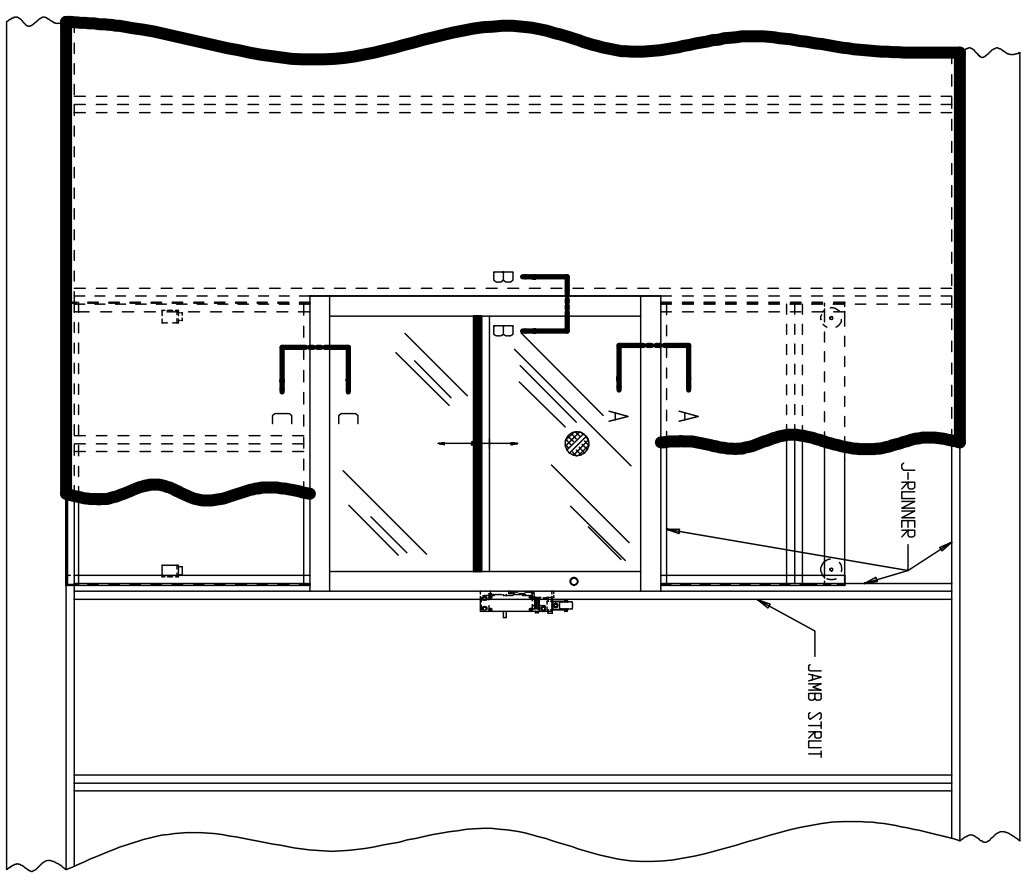
DWG VIEW		PART NUMBER		REV. DATE		
DETAILS, DATA, CODES		TYPICAL		-		
DRAWING TITLE		DRAWING NO.		-		
DW 500 BI-PART OPEN SOUTH		DW-012		-		
PAGE:	DRAWN BY:	DWG. DATE	JOB OR APP.#	DEALER P.O.#	DWG. SCALE	REV. LEVEL(1-3)
4/4	B. BRATTEN	JAN. 2014	-	-	1:24	-





NOTE: AS WALL THICKNESS CHANGES, THE METHOD OF DRYWALL INSTALLATION WILL CHANGE ACCORDINGLY. THIS DRAWING SHOULD BE USED ONLY AS A REFERENCE.

ONLY DOOR FRAME IS SHOWN IN SECTION DETAILS FOR SIMPLICITY



WALL TO BE BUILT TO UNDERWRITERS LABORATORIES STANDARD WA38

HOISTWAY TO BE BUILT BEFORE DUMBWALTER IS INSTALLED EXCEPT THE WALLS ARE TO BE OMITTED WHERE HOISTWAY DOORS OCCUR UNTIL THE DUMBWALTER IS INSTALLED & HOISTWAY DOORS ARE SET IN PLACE

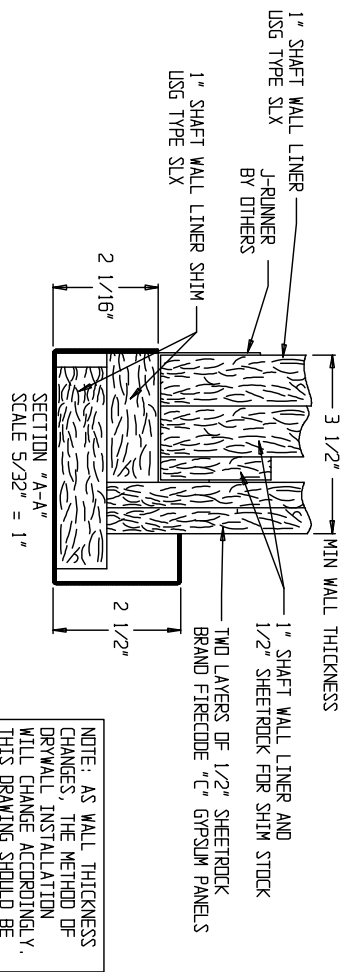
L.O. BY		DATE REQ	
APPROVED		PAINT	
DATE L.O.		SHEET 1 OF 1	
SCALE 1/16" = 1"		# REQ'D	

**INCLINATOR**  
COMPANY OF AMERICA  
HARRISBURG, PA

LEVEL 1  
1/9/06

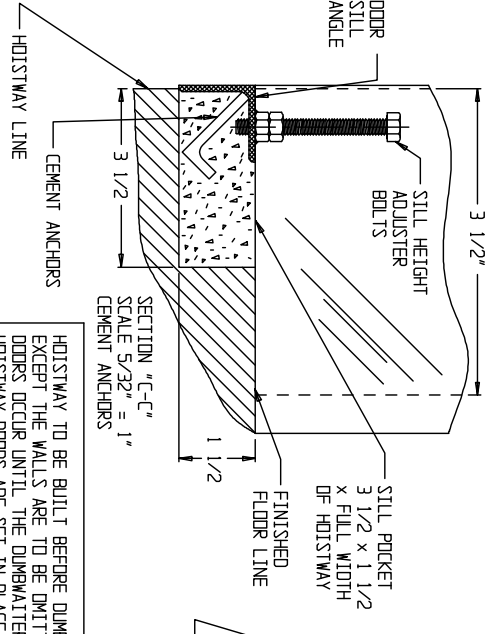
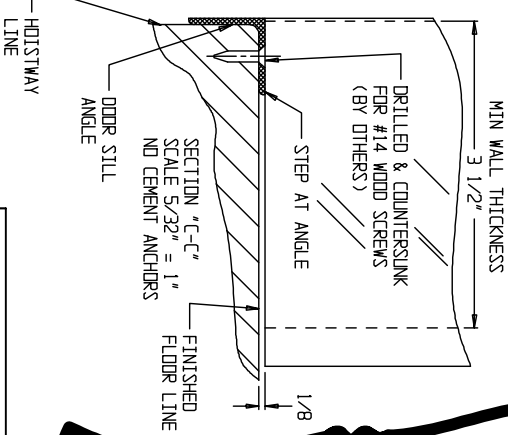
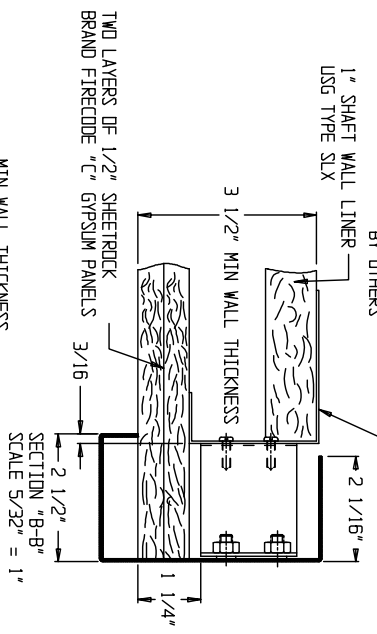
DWG NO. 1000-725  
JOB NO.

WALL TO BE BUILT TO UNDERWRITERS  
LABORATORIES STANDARD W438  
WALL DESIGN

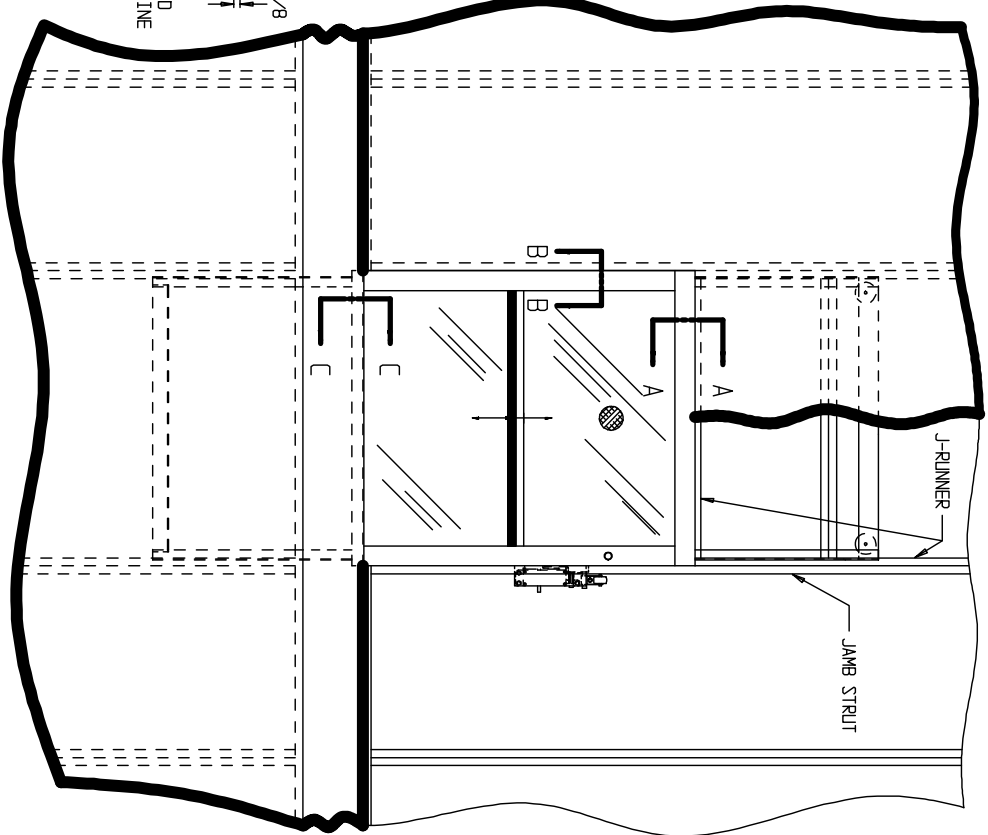


NOTE: AS WALL THICKNESS CHANGES, THE METHOD OF DRYWALL INSTALLATION WILL CHANGE ACCORDINGLY. THIS DRAWING SHOULD BE USED ONLY AS A REFERENCE.

ONLY DOOR FRAME IS SHOWN IN SECTION DETAILS FOR SIMPLICITY



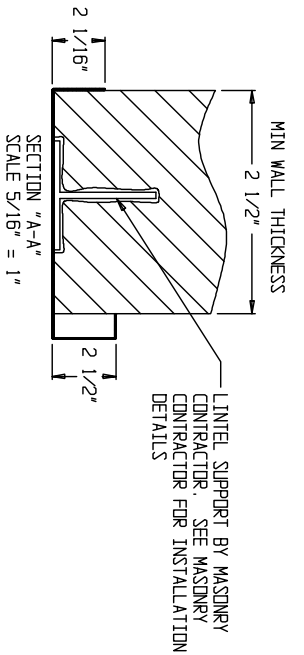
HOISTWAY TO BE BUILT BEFORE DUMBWATER IS INSTALLED EXCEPT THE WALLS ARE TO BE OMITTED WHERE HOISTWAY DOORS OCCUR UNTIL THE DUMBWATER IS INSTALLED & HOISTWAY DOORS ARE SET IN PLACE



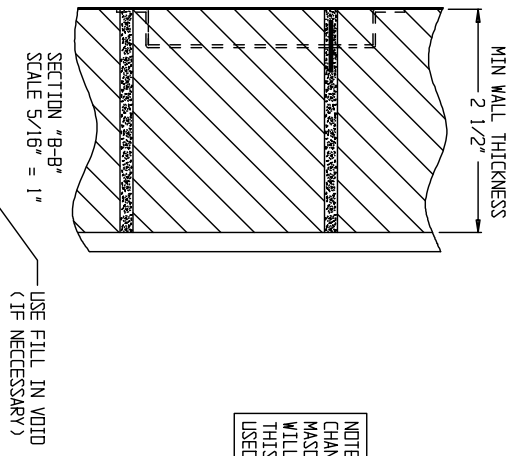
TITLE: TYPICAL VARIATION OF DRYWALL CONSTRUCTION WITH KAFKA UL LABELED FLOOR LOADING BI PARTING LEVEL 3 1/9/06

L.D. BY	DATE REQ	APPROVED		DWG NO.	JOB NO.
APPROVED	PAINIT	DATE REQ		1000-725	JJP
DATE L.D.	SHEET 1 OF 1	SCALE 1/16" = 1"		# REQ'D	

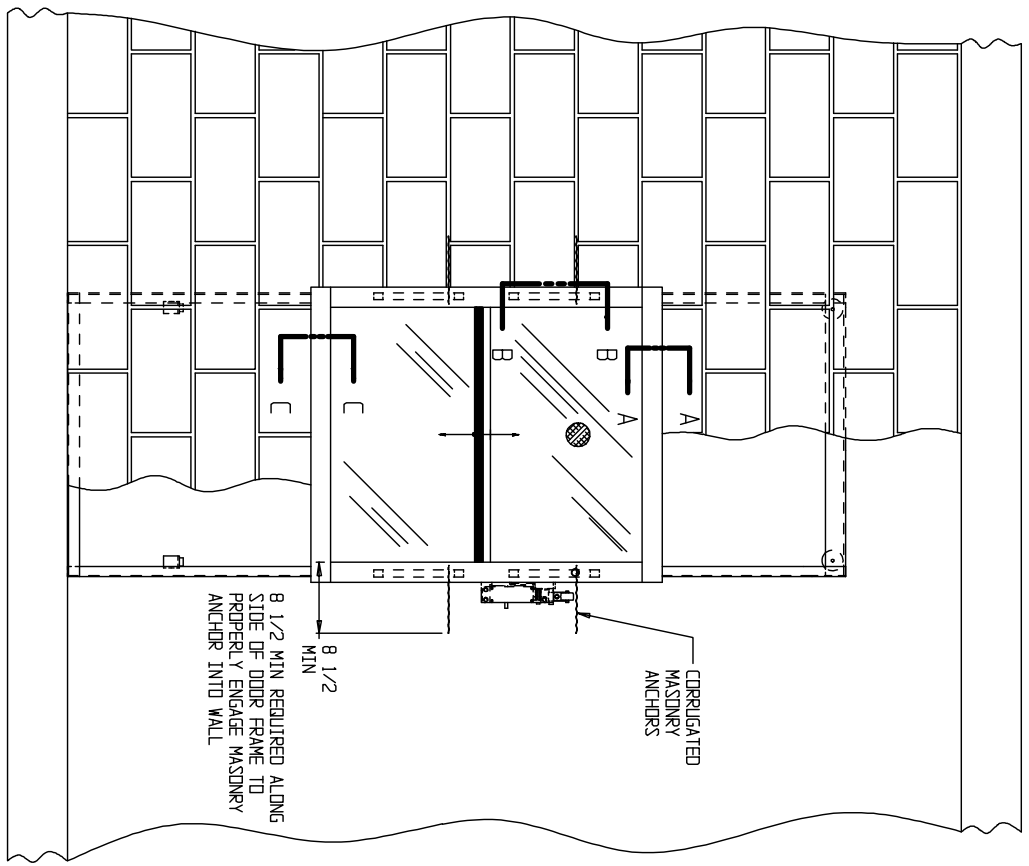
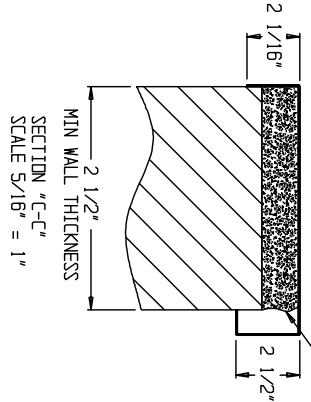
**INCLINATOR**  
COMPANY OF AMERICA  
HARRISBURG, PA



NOTE: AS WALL THICKNESS CHANGES, THE METHOD OF MASONRY INSTALLATION WILL CHANGE ACCORDINGLY. THIS DRAWING SHOULD BE USED ONLY AS A REFERENCE.



USE FILL IN VOID (IF NECESSARY)

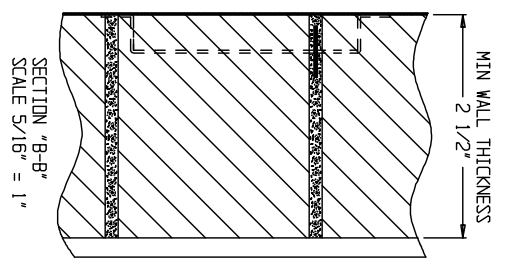
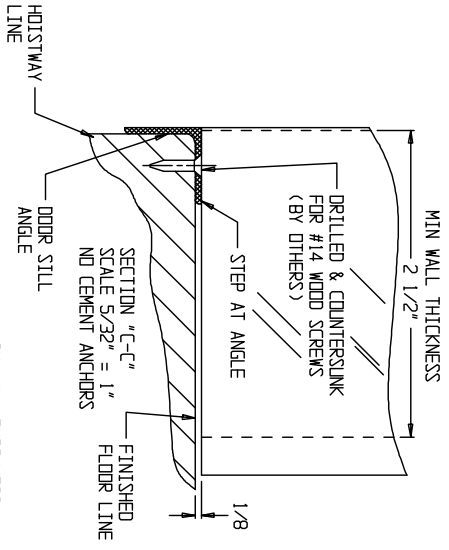
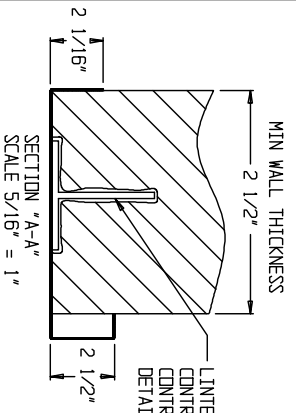


HOISTWAY TO BE BUILT BEFORE DUMBWATER IS INSTALLED EXCEPT THE WALLS ARE TO BE OMITTED WHERE HOISTWAY DOORS OCCUR UNTIL THE DUMBWATER IS INSTALLED & HOISTWAY DOORS ARE SET IN PLACE

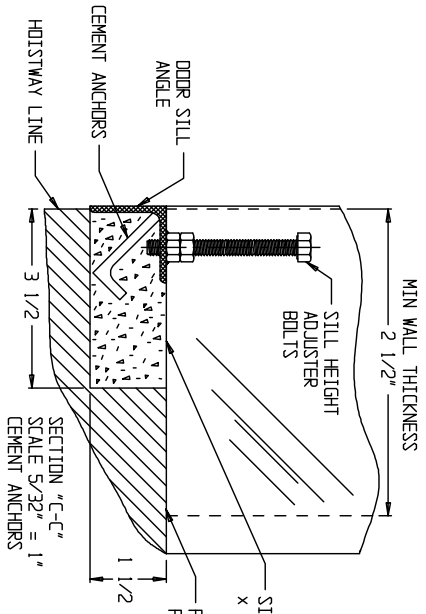
TITLE: TYPICAL VARIATION OF MASONRY CONSTRUCTION WITH KAFKA UL LABELED COUNTER LOADING BY PARTING		LEVEL 2	
L.D. BY		DATE REQ	
APPROVED		PAINT	
DATE L.D.		SHEET 1 OF 1	
SCALE 1/16" = 1"		# REQ'D	
-B- JJP		DWG NO. 1000-725	
JJP		JOB NO.	
INCLINATOR COMPANY OF AMERICA HARRISBURG, PA		LEVEL 2 1/9/06	

LINTEL SUPPORT BY MASONRY CONTRACTOR. SEE MASONRY DETAILS FOR INSTALLATION

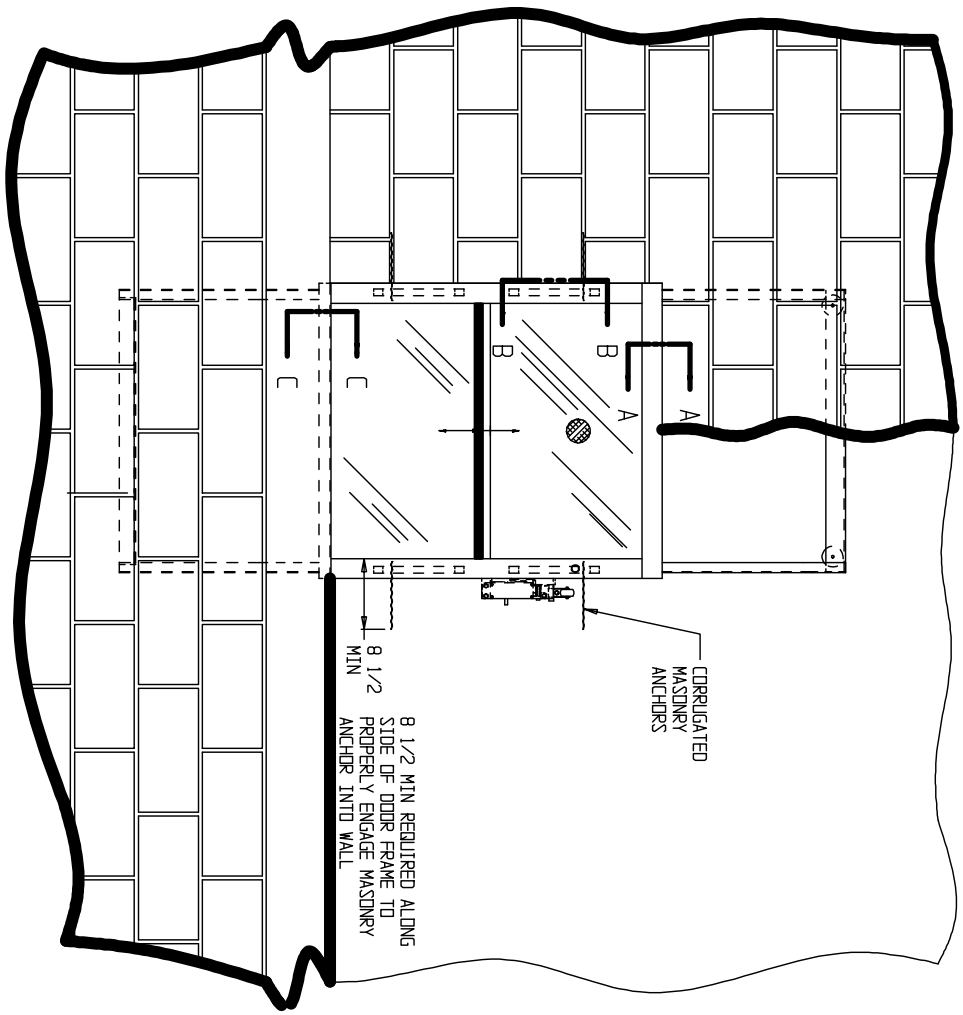
NOTE: AS WALL THICKNESS CHANGES, THE METHOD OF MASONRY INSTALLATION WILL CHANGE ACCORDINGLY. THIS DRAWING SHOULD BE USED ONLY AS A REFERENCE.



ONLY DOOR FRAME IS SHOWN IN SECTION DETAILS FOR SIMPLICITY



HOISTWAY TO BE BUILT BEFORE DUMBWATER IS INSTALLED EXCEPT THE WALLS ARE TO BE OMITTED WHERE HOISTWAY DOORS OCCUR UNTIL THE DUMBWATER IS INSTALLED & HOISTWAY DOORS ARE SET IN PLACE



8 1/2 MIN REQUIRED ALONG SIDE OF DOOR FRAME TO PROPERLY ENGAGE MASONRY ANCHOR INTO WALL

TITLE: TYPICAL VARIATION OF MASONRY CONSTRUCTION WITH KAFKA UL LABELED FLOOR LOADING BI PARTING LEVEL 4

L.D. BY	DATE REQ	DWG NO.	JOB NO.
APPROVED	PAINIT	-B-	JJP
DATE L.D.	SHEET 1 OF 1	1000-725	
SCALE 1/16" = 1"	# REQ'D		

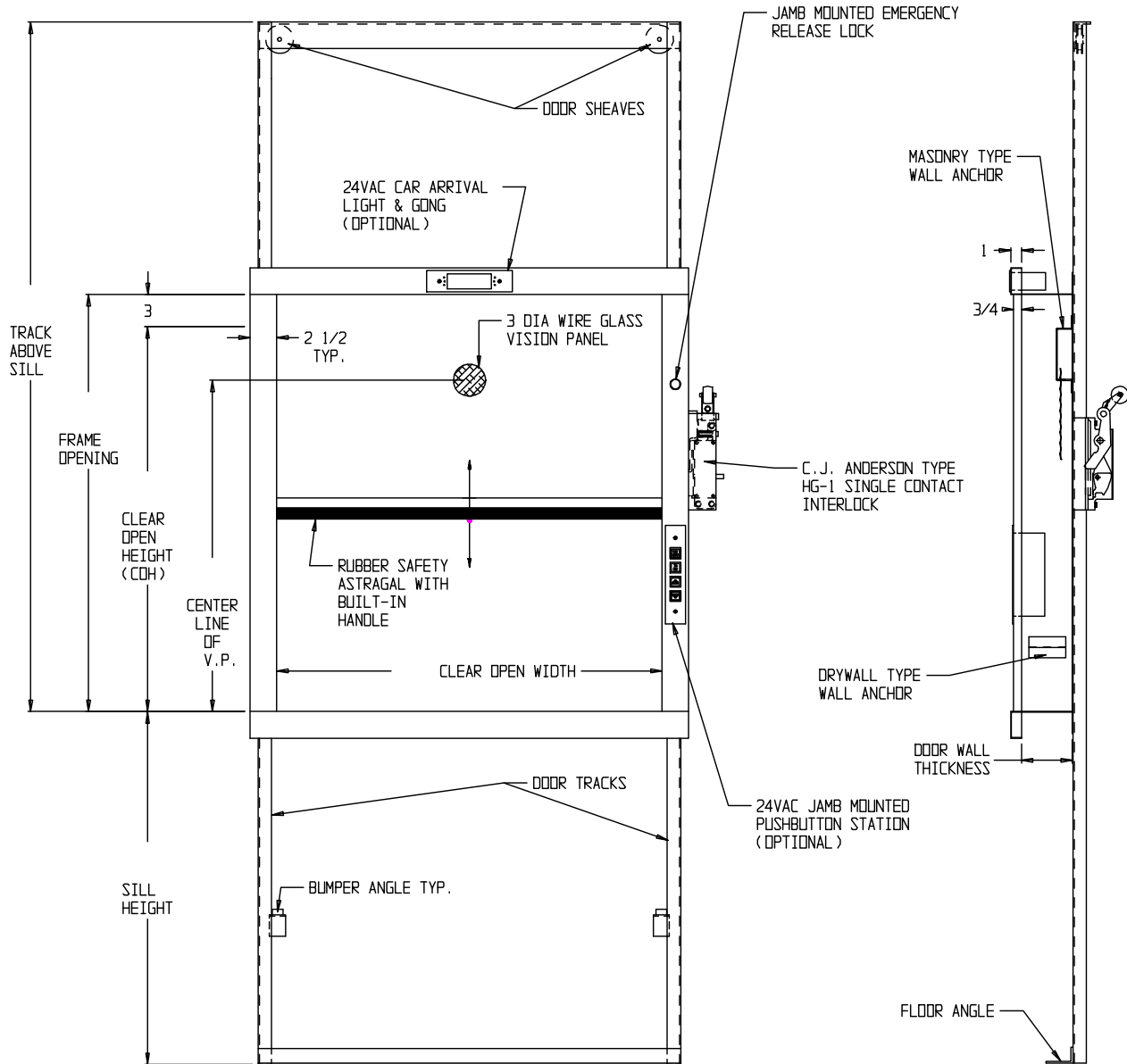
**INCLINATOR**  
COMPANY OF AMERICA  
HARRISBURG, PA



BUTTON VOLTAGE  
24 V.A.C.

ARRIVAL LIGHT  
24 V.A.C.

WALL CONSTRUCTION  
DRYWALL | MASONRY



EQUATIONS

TRACK ABOVE SILL=(COH/2)+COH+7 1/2  
MIN. TRACK BELOW SILL=(COH/2)+2 1/2  
CENTERLINE OF V.P.=FRAME OPENING-8

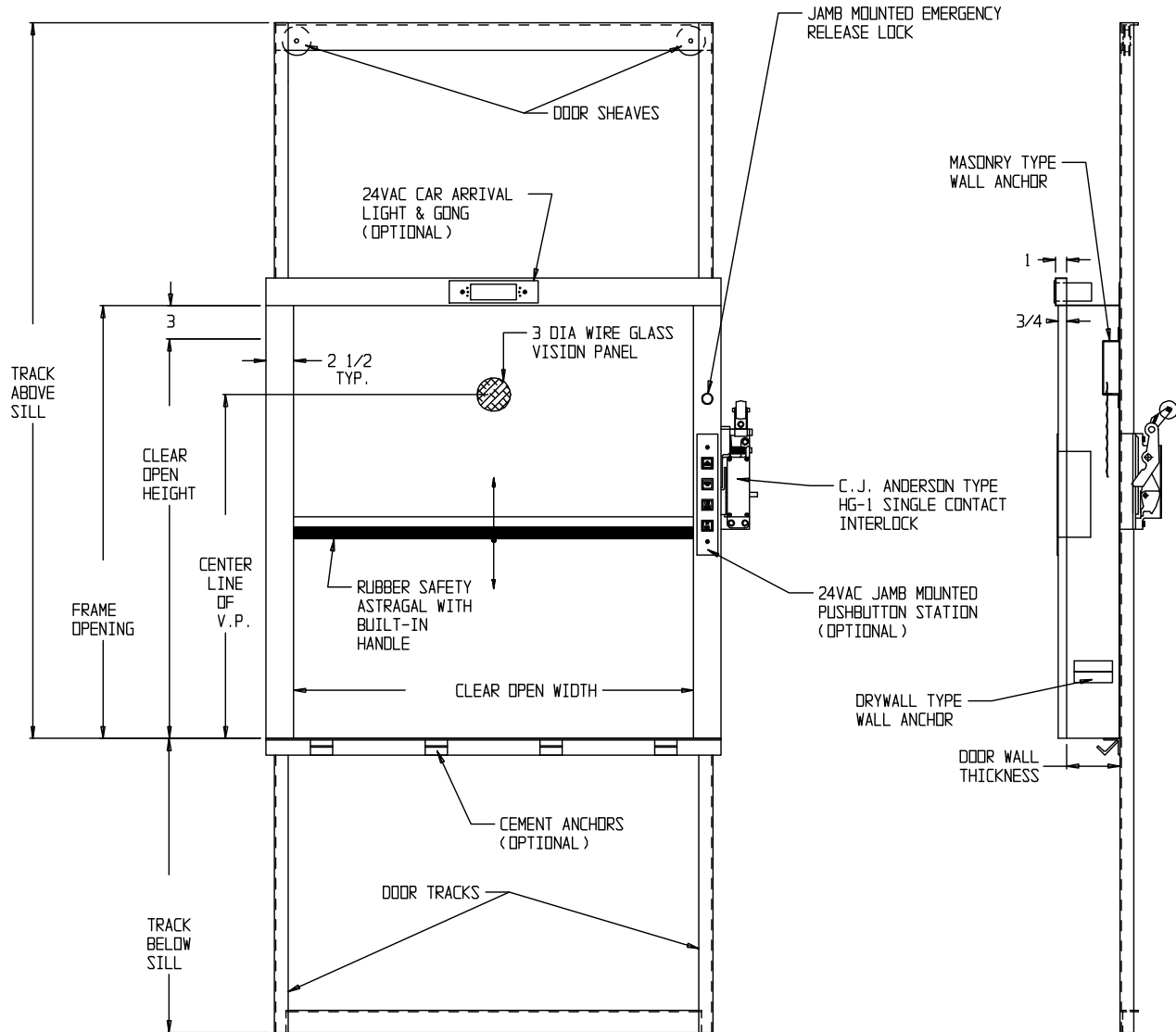
MATERIAL: 16 GA. STAINLESS STEEL - #4 FINISH OR 16 GA. PRIMED PLAIN STEEL

JOB NAME	CUSTOMER	REVISIONS				
		SYM.	DATE	DESCRIPTION	BY	
SHIP TO	TITLE: DUMBWAITER UL "B" LABELED BI-PARTING COUNTER LOADING DOOR				LEVEL 1 2/8/06	
L.O. BY		DATE REQ				
APPROVED		PAINT				
DATE L.O.		SHEET OF				
SCALE	3/32" = 1"	#	REQ'D	-B-	DWG NO. 1000-709 JJP	JOB NO.

BUTTON VOLTAGE  
24 V.A.C.

ARRIVAL LIGHT  
24 V.A.C.

WALL CONSTRUCTION  
DRYWALL | MASONRY

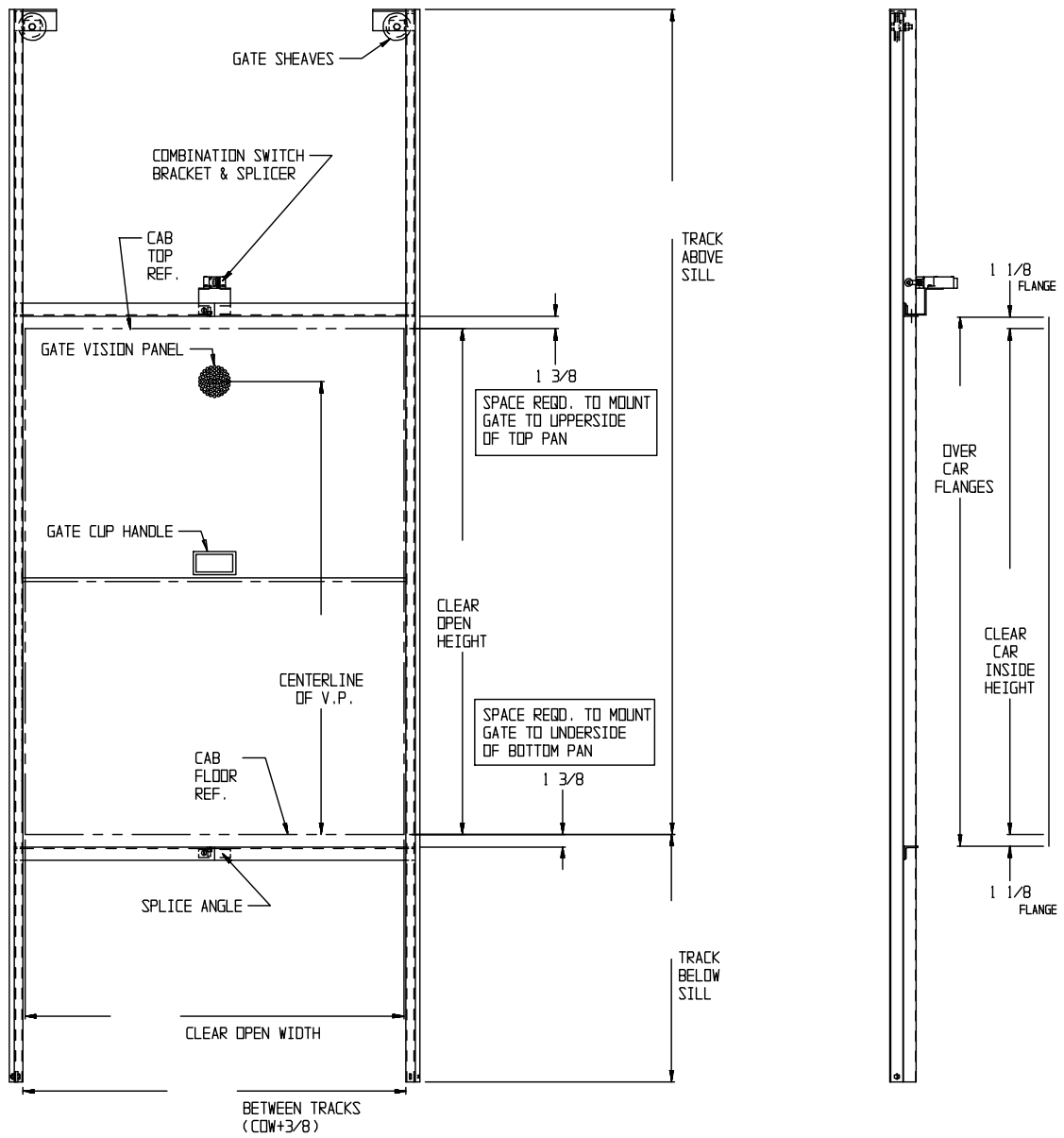


EQUATIONS

TRACK ABOVE SILL=(COH/2)+COH+7 1/2  
 TRACK BELOW SILL=(COH/2)+2 1/2  
 CENTERLINE OF V.P.=FRAME OPENING-8

MATERIAL: 16 GA. STAINLESS STEEL - #4 FINISH OR 16 GA. PRIMED PLAIN STEEL

JOB NAME	CUSTOMER	REVISIONS			
		SYM.	DATE	DESCRIPTION	BY
SHIP TO	TITLE: DUMBWAITER UL "B" LABELED BI-PARTING FLOOR LOADING DOOR				LEVEL 2 2/8/06
	L.O. BY	DATE REQ			
	APPROVED	PAINT			
	DATE L.O.	SHEET OF			
	SCALE 3/32" = 1"	# REQ'D			
			-B-	DWG NO. JJP 1000-709	JOB NO.

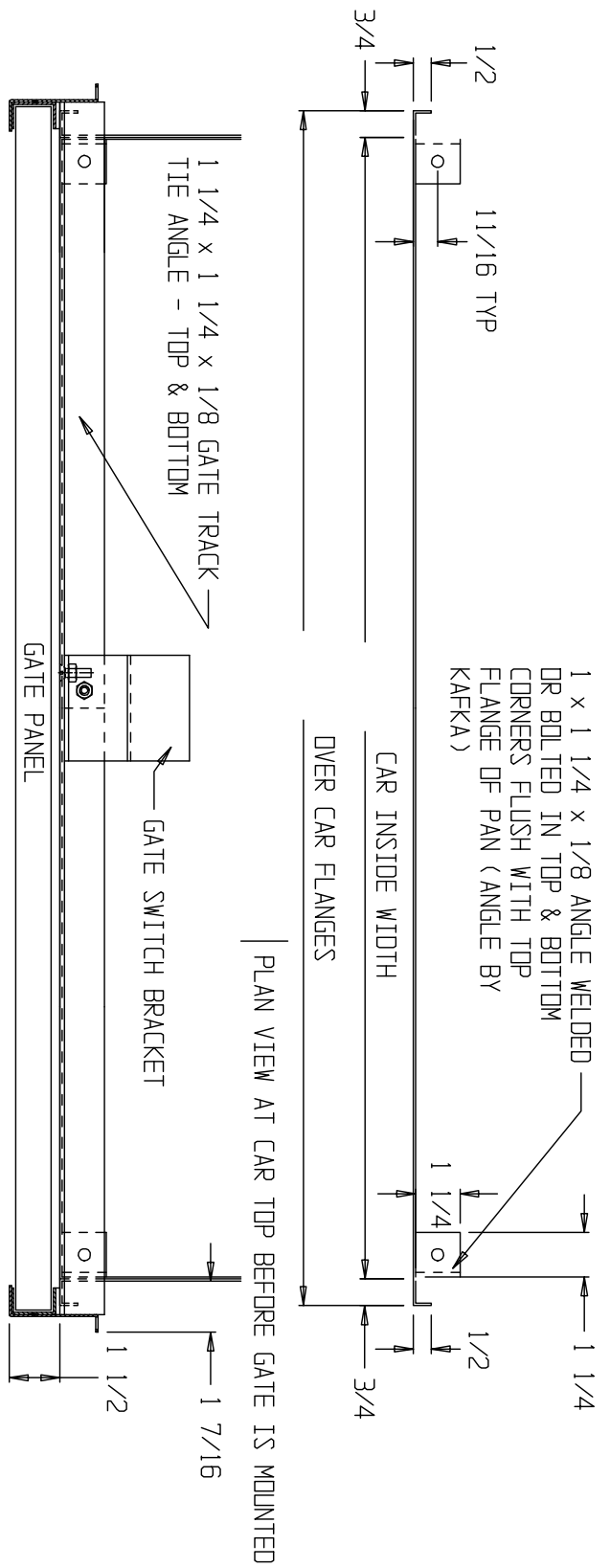


EQUATIONS

$TRACK\ ABOVE\ SILL = (CDH/2) + CDH + 6\ 5/16$   
 $TRACK\ BELOW\ SILL = (CDH/2) + 1\ 1/4$   
 $CENTERLINE\ OF\ V.P. = CDH - 5$

MATERIAL: 16 GA. STAINLESS STEEL - #4 FINISH OR 16 GA. PRIMED PLAIN STEEL

JOB NAME		CUSTOMER		REVISIONS			
		SYM.	DATE	DESCRIPTION	BY		
SHIP TO		TITLE: DUMBWAITER SINGLE OPENING BI-PARTING MANUAL GATE TRACK ASSEMBLY				LEVEL 1 8/24/05	
L.O. BY JJP		DATE REQ					
APPROVED		PAINT					
DATE L.O.		SHEET OF					
SCALE 3/32" = 1"		# REQ'D					
		-B-		DWG NO. 1000-430		JOB NO.	



JOB NAME: CUSTOMER: \_\_\_\_\_

SYM.	DATE	DESCRIPTION	BY


SHIP TO: \_\_\_\_\_

TITLE: PLAN VIEW AT CAR TOP OF BI-PARTING CAR GATE FOR INCLINATOR DUMBWAITER

LEVEL 1  
8/24/05

L.O. BY	DATE REQ
APPROVED	PAINT
DATE L.O.	SHEET
SCALE N.T.S.	# REQ'D

**INCLINATOR**  
COMPANY OF  
HARRISBURG, PA



**AMERICA**

-A- DWG NO. 1000-428 JOB NO. \_\_\_\_\_  
JJP