

## ORDER REFERENCE

**PROJECT:** 500# DUMBWAITER  
MACHINE BELOW

TYPICAL DRAWING FOR REFERENCE ONLY.  
NOT TO BE USED FOR CONSTRUCTION

## SPECIFICATIONS

**MODEL:** DW-500 (BI-PARTING DOORS AND GATES)

**LANDINGS:** 2

**OPENING:** EAST-WEST

**CAPACITY:** 500#

**SPEED:** 50 F.P.M.

**SUSPENSION MEANS:** 1 WIRE ROPE 5,400 LBS. EHS  
STEEL 1/4" x 8 x 19 IWRC

**CAR CONSTRUCTION:** STAINLESS STEEL  
OR PAINTED STEEL

NOTE: ALL MANUFACTURER SUPPLIED CAR AND EQUIPMENT OPTIONS ARE NOTED ON THE CONFIRMING ORDER SHEET.

DISCLAIMER: ONCE DRAWINGS HAVE BEEN APPROVED, SIGNED AND WITHIN 5 DAYS OF PRODUCTION, THE CUSTOMER WILL BEAR ALL RESPONSIBILITY AND LIABILITY OF FINISHED UNIT.


PLEASE REFER ANY QUESTION TO YOUR SALES REPRESENTATIVE

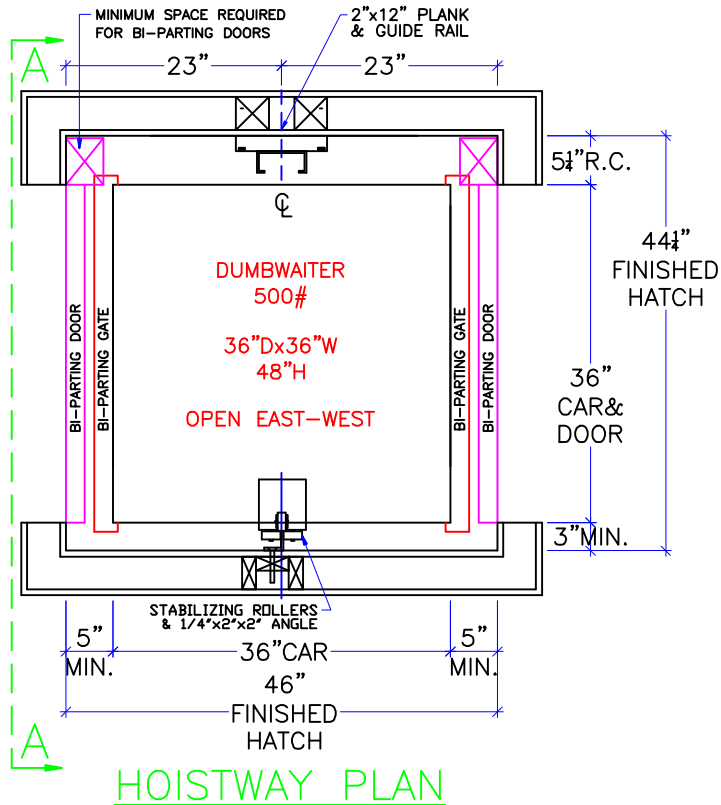
APPROVED

UNAPPROVED

\_\_\_\_\_  
SIGNATURE

\_\_\_\_\_  
DATE

<b>DWG VIEW</b>	<b>PART NUMBER</b>	<b>REV. DATE</b>
COVER SHEET	TYPICAL	-
 <b>DRAWING TITLE</b>	<b>DRAWING NO.</b>	-
DW500 BI-PART OPEN EAST-WEST	DW-013	-
<b>PAGE:</b>	<b>DRAWN BY:</b>	<b>DWG. DATE</b>
1/4	B. BRATTEN	JAN. 2014
<b>JOB OR APP.#</b>	<b>DEALER P.O.#</b>	<b>DWG. SCALE</b>
-	-	1:24
<b>REV. LEVEL (1-3)</b>		-



SEE "LOAD CAPACITY CALCULATOR"  
FOR OTHER POSSIBLE  
DW 500# CAB DIMENSIONS

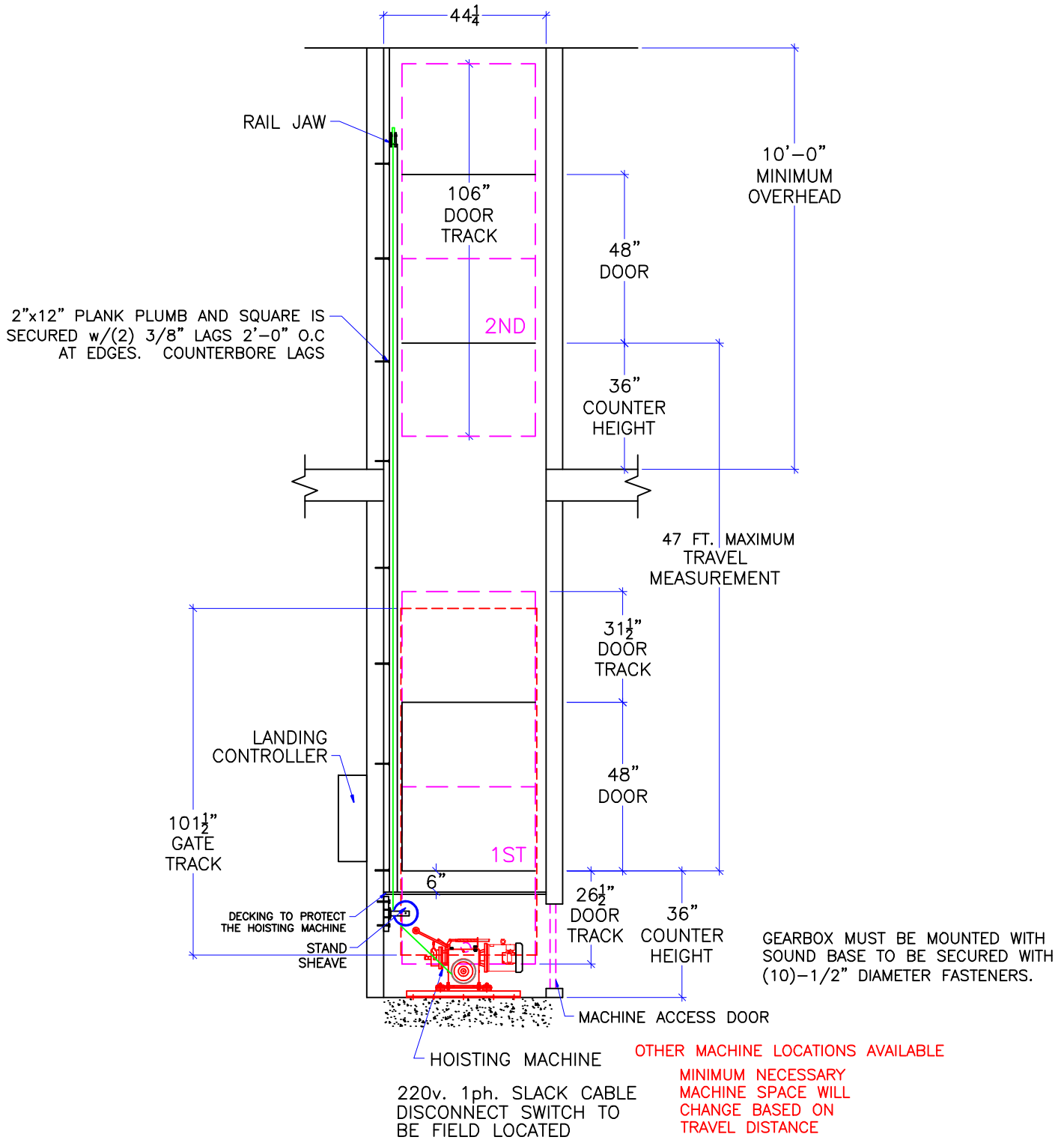
NOTE:  
ALL HOISTWAY CONSTRUCTION MUST COMPLY WITH NATIONAL, STATE,  
AND LOCAL CODES. HOISTWAY MUST BE PLUMB AND STRAIGHT FROM  
TOP TO BOTTOM WITH NO PROJECTIONS INTO THE HOISTWAY.

NOTICE TO ELECTRICAL CONTRACTOR:

- ALL ELECTRICAL WIRING MUST BE DONE BY A JOURNEYMAN MECHANIC AND MUST MEET ALL NATIONAL, STATE, AND LOCAL CODES.
- BRING (3) #10 W/GND FROM RESIDENCE INCOMING POWER PANEL 30AMP BREAKER(240V, NEUTRAL, GROUND)TO THE MACHINE ROOM.
- BRING (2) #12 W/GND FROM RESIDENCE INCOMING POWER PANEL 20AMP GFI BREAKER(120V, NEUTRAL, GROUND)TO THE MACHINE ROOM.
- REQUIRED LOW VOTAGE WIRING IS SUPPLIED BY MANUFACTURER. ALL EXTENSIONS ADDITIONS, ETC. SHALL BE DONE WITH THE SAME SIZE AND TYPE OF WIRE AS ORIGINALLY SUPPLIED BY THE MANUFACTURER.
- ALL MEANS FOR ACCESS TO EQUIPMENT SHALL BE PROVIDED WITH A LOCK. ALL SHAFT DOORS MUST BE INTERLOCKED.

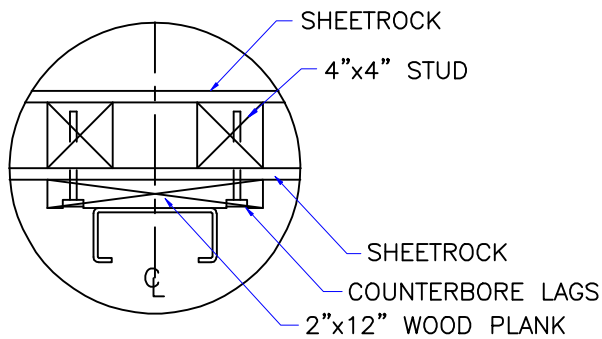
DWG VIEW HOISTWAY LAYOUT		PART NUMBER TYPICAL		REV.DATE	
DRAWING TITLE DW500 BI-PART OPEN EAST-WEST		DRAWING NO. DW-013		-	
PAGE: 2/4	DRAWN BY: B.BRATTEN	DWG. DATE JAN. 2014	JOB OR APP.# -	DEALER P.O.# -	DWG. SCALE 1:24
					REV.LEVEL(1-3) -





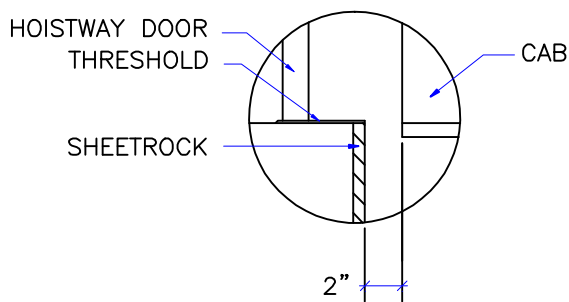
**SECTION A-A**

DWG VIEW		SECTION A-A		PART NUMBER		REV. DATE	
				TYPICAL		-	
		DRAWING TITLE		DRAWING NO.		-	
		DW500 BI-PART OPEN EAST-WEST		DW-013		-	
PAGE:	DRAWN BY:	DWG. DATE	JOB OR APP.#	DEALER P.O.#	DWG. SCALE	REV. LEVEL(1-3)	
3/4	B. BRATTEN	JAN. 2014	-	-	1:24	-	



NOTE:  
 WHEN STUD AND SHEETROCK CONSTRUCTION IS USED ON THE GUIDE RAIL SUPPORT WALL 4"x4" STUDDING IS NEEDED BEHIND THE 2"x12" PLANK.

RAIL DETAIL



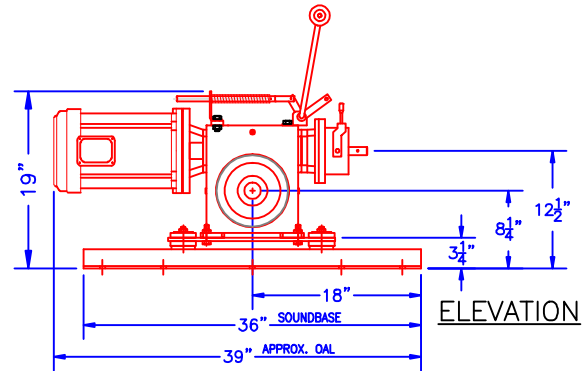
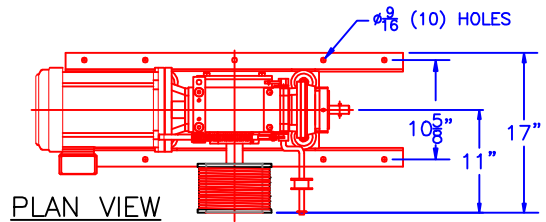
DOOR SILLS TO BE INSTALLED BY G.C. AFTER LIFT SUPPLIER HAS INSTALLED A RUNNING PLATFORM.

SILL DETAIL

FOR DOOR DETAILS SEE ATTACHED DRAWINGS

DOOR FRAME DETAIL

SEE "LOAD CAPACITY CALCULATOR" FOR OTHER POSSIBLE DW 500# CAB DIMENSIONS



1. MACHINE ROOM SIZE REQUIREMENTS MAY CHANGE WITH TRAVEL DISTANCE
2. MACHINE ROOM CAN BE LOCATED ABOVE OR BELOW HOISTWAY
3. SHEAVE COMBINATIONS WILL CHANGE WITH ALTERNATE MACHINE ROOM LOCATIONS

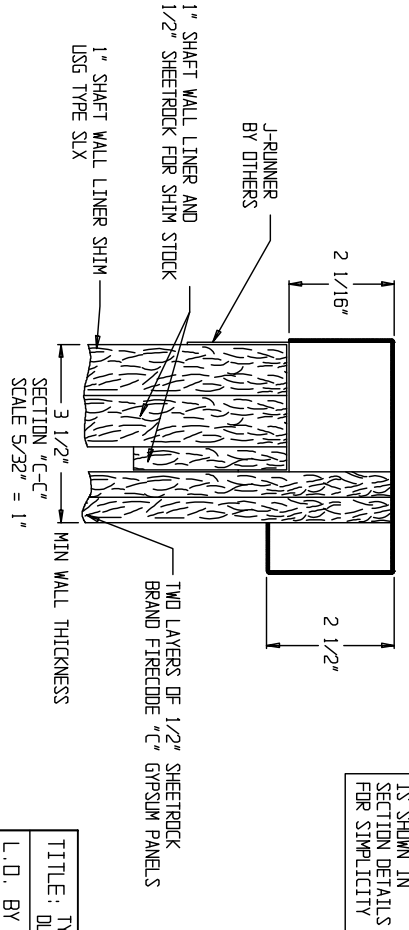
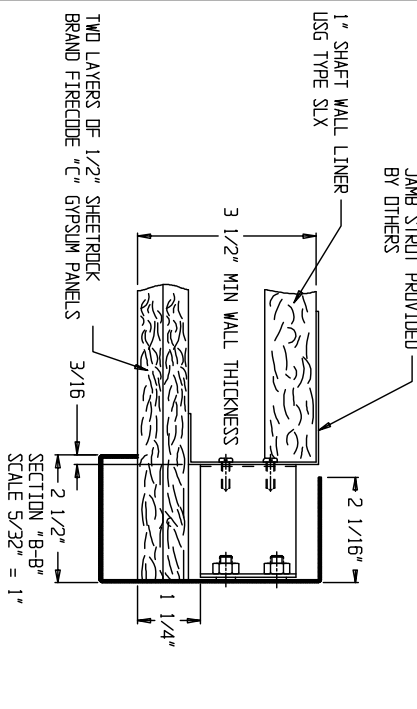
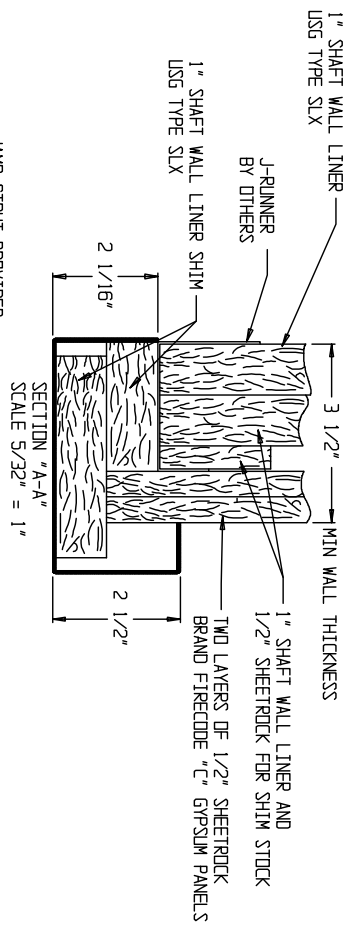
500# DUMBWAITER MACHINE DIMENSIONS

1. REACTIONS ON ALL SHEAVES AND MOUNTINGS  
 STATIC = 1,100 LBS.  
 IMPACT = 2,200 LBS.
2. RAIL FASTENING TO 2" x 12" PLANK  
 #14 x 1 3/4" TYPE A S.M.S. RAIL IS PRE-DRILLED AT FACTORY.
3. BOLT FASTENING OF CAR TO TROLLEY  
 1/2" - 13 x 2 1/2" SOCKET HD CAP SCREWS.

TECHNICAL DATA

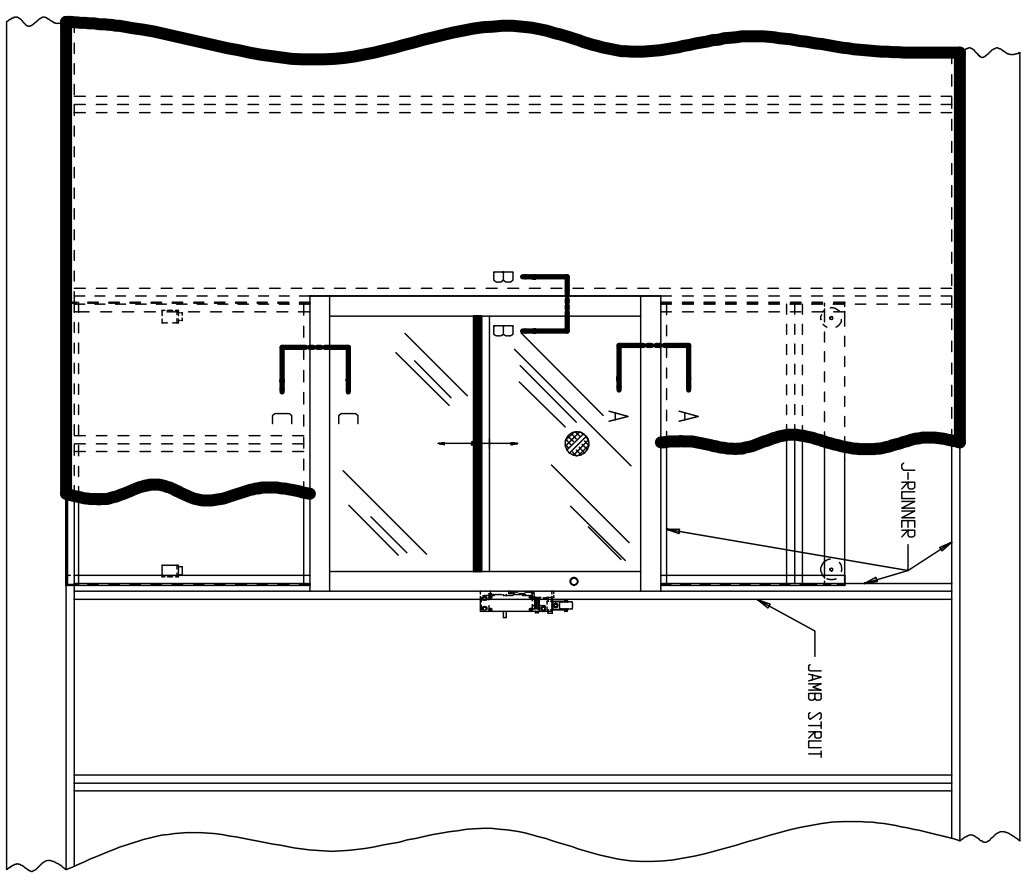
DWG VIEW		PART NUMBER		REV. DATE		
DETAILS, DATA, CODES		TYPICAL		-		
DRAWING TITLE		DRAWING NO.		-		
DW500 BI-PART OPEN EAST-WEST		DW-013		-		
PAGE:	DRAWN BY:	DWG. DATE	JOB OR APP.#	DEALER P.O.#	DWG. SCALE	REV. LEVEL(1-3)
4/4	B. BRATTEN	JAN. 2014	-	-	1:24	-





NOTE: AS WALL THICKNESS CHANGES, THE METHOD OF DRYWALL INSTALLATION WILL CHANGE ACCORDINGLY. THIS DRAWING SHOULD BE USED ONLY AS A REFERENCE.

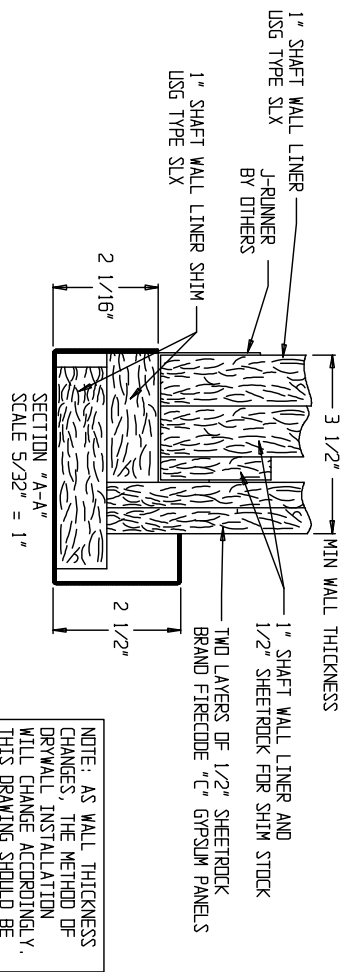
ONLY DOOR FRAME IS SHOWN IN SECTION DETAILS FOR SIMPLICITY



WALL TO BE BUILT TO UNDERWRITERS LABORATORIES STANDARD WA38 HOISTWAY TO BE BUILT BEFORE DUMBWALTER IS INSTALLED EXCEPT THE WALLS ARE TO BE OMITTED WHERE HOISTWAY DOORS OCCUR UNTIL THE DUMBWALTER IS INSTALLED & HOISTWAY DOORS ARE SET IN PLACE

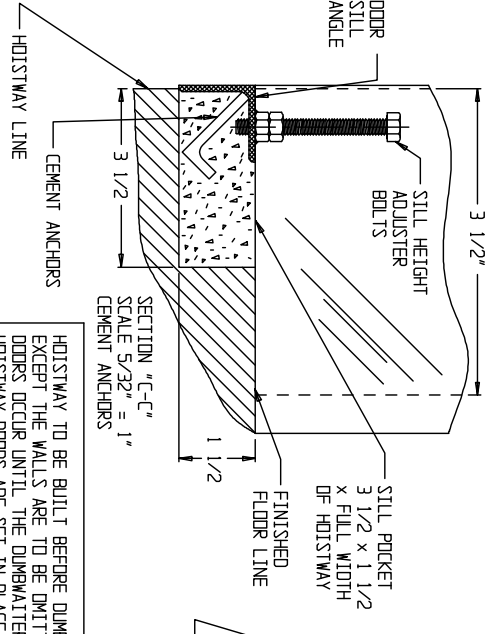
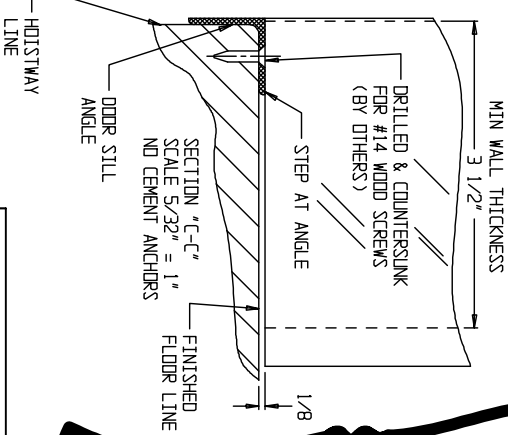
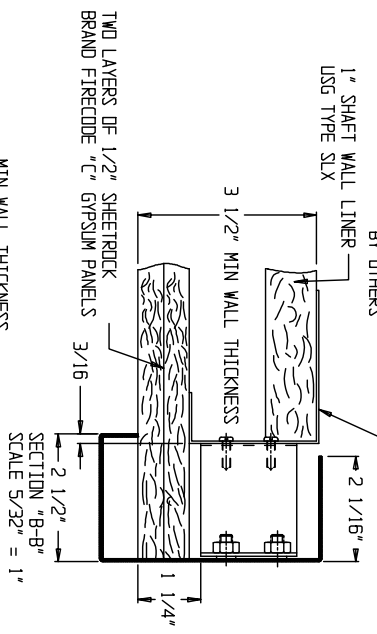
TITLE: TYPICAL VARIATION OF DRYWALL CONSTRUCTION WITH KARKA UL LABELED COUNTER LOADING BY PARTING		LEVEL 1 1/9/06	
L.O. BY	DATE REQ		
APPROVED	PAINT		
DATE L.O.	SHEET 1 OF 1		
SCALE 1/16" = 1"	# REQ'D	-B- JJP	DWG NO. 1000-725
		JOB NO.	

WALL TO BE BUILT TO UNDERWRITERS  
LABORATORIES STANDARD W438  
WALL DESIGN

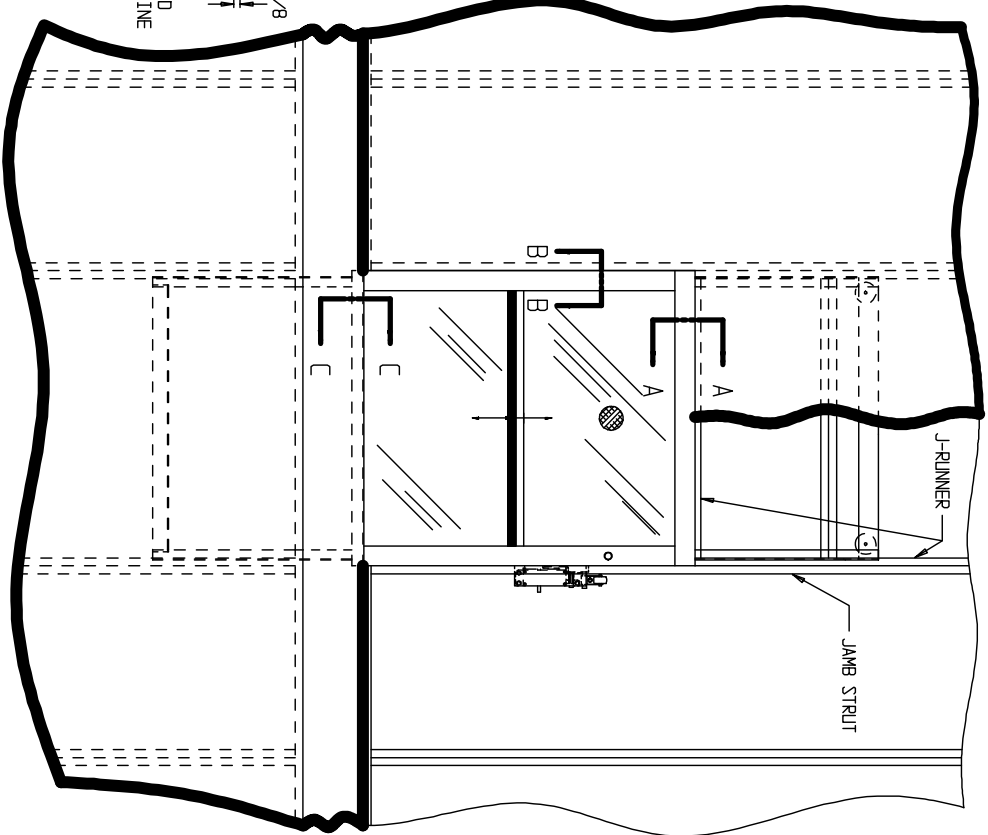


NOTE: AS WALL THICKNESS CHANGES, THE METHOD OF DRYWALL INSTALLATION WILL CHANGE ACCORDINGLY. THIS DRAWING SHOULD BE USED ONLY AS A REFERENCE.

ONLY DOOR FRAME IS SHOWN IN SECTION DETAILS FOR SIMPLICITY



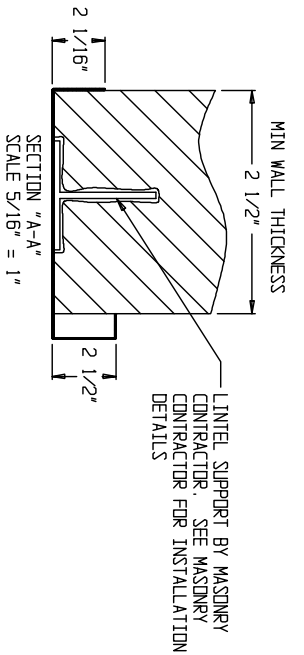
HOISTWAY TO BE BUILT BEFORE DUMBWATER IS INSTALLED EXCEPT THE WALLS ARE TO BE OMITTED WHERE HOISTWAY DOORS OCCUR UNTIL THE DUMBWATER IS INSTALLED & HOISTWAY DOORS ARE SET IN PLACE



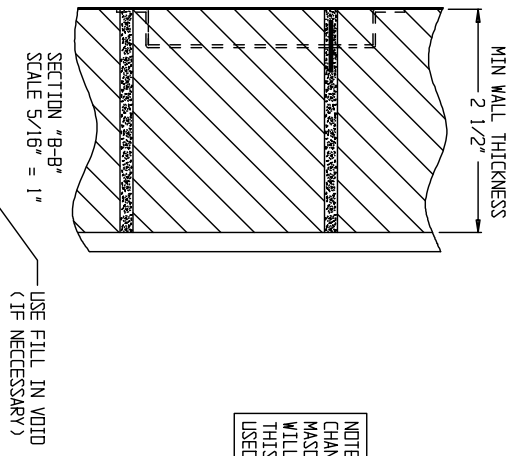
TITLE: TYPICAL VARIATION OF DRYWALL CONSTRUCTION WITH KAFKA UL LABELED FLOOR LOADING BI PARTING LEVEL 3  
DUMBWATER DOOR 1/9/06

L.D. BY	DATE REQ	PAINT	SHEET 1 OF 1	DWG NO. 1000-725	JOB NO.
APPROVED	DATE L.D.				
SCALE 1/16" = 1"	# REQ'D				

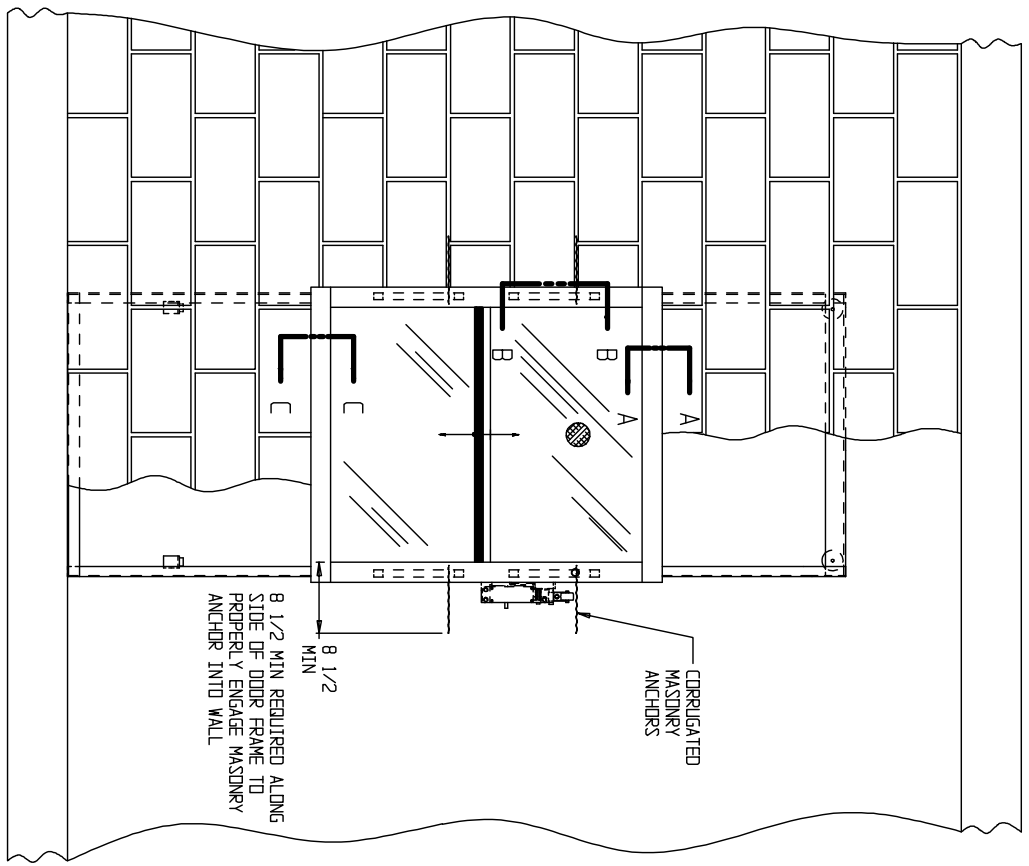
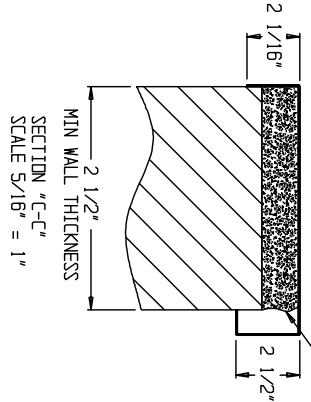
**INCLINATOR**  
COMPANY OF AMERICA  
HARRISBURG, PA



NOTE: AS WALL THICKNESS CHANGES, THE METHOD OF MASONRY INSTALLATION WILL CHANGE ACCORDINGLY. THIS DRAWING SHOULD BE USED ONLY AS A REFERENCE.



ONLY DOOR FRAME IS SHOWN IN SECTION DETAILS FOR SIMPLICITY



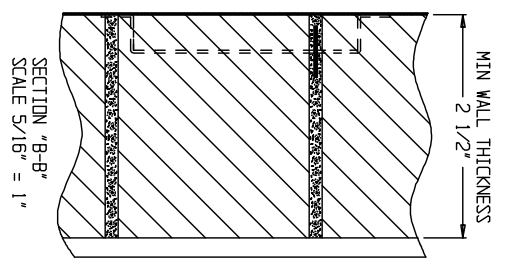
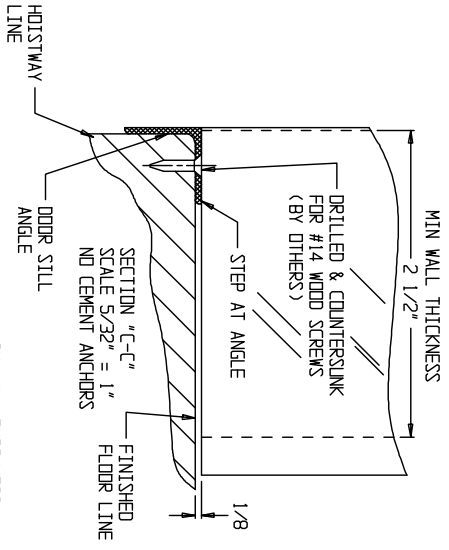
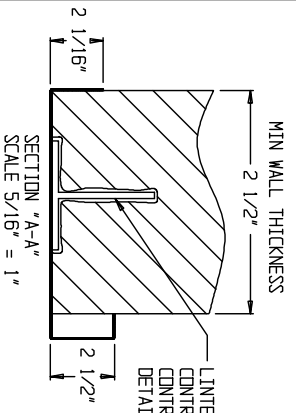
HOISTWAY TO BE BUILT BEFORE DUMBWATER IS INSTALLED EXCEPT THE WALLS ARE TO BE OMITTED WHERE HOISTWAY DOORS OCCUR UNTIL THE DUMBWATER IS INSTALLED & HOISTWAY DOORS ARE SET IN PLACE

TITLE: TYPICAL VARIATION OF MASONRY CONSTRUCTION WITH KAFKA UL LABELED COUNTER LOADING BI PARTING LEVEL 2  
DUMBWATER DOOR 1/9/06

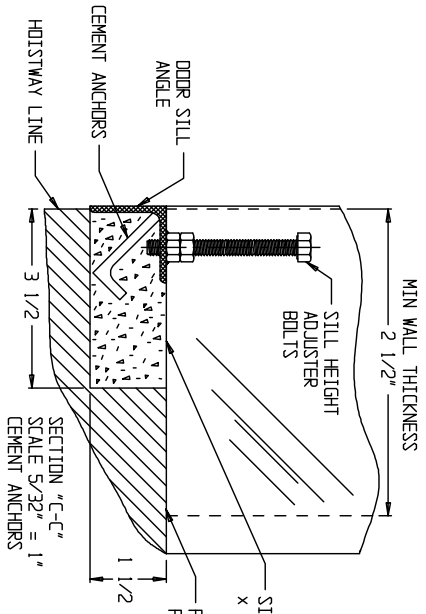
L.O. BY	DATE REQ		DWG NO. 1000-725 JJP	JOB NO.
APPROVED	PALNT			
DATE L.O.	SHEET 1 OF 1			
SCALE 1/16" = 1"	# REQ'D			

LINTEL SUPPORT BY MASONRY CONTRACTOR. SEE MASONRY DETAILS FOR INSTALLATION

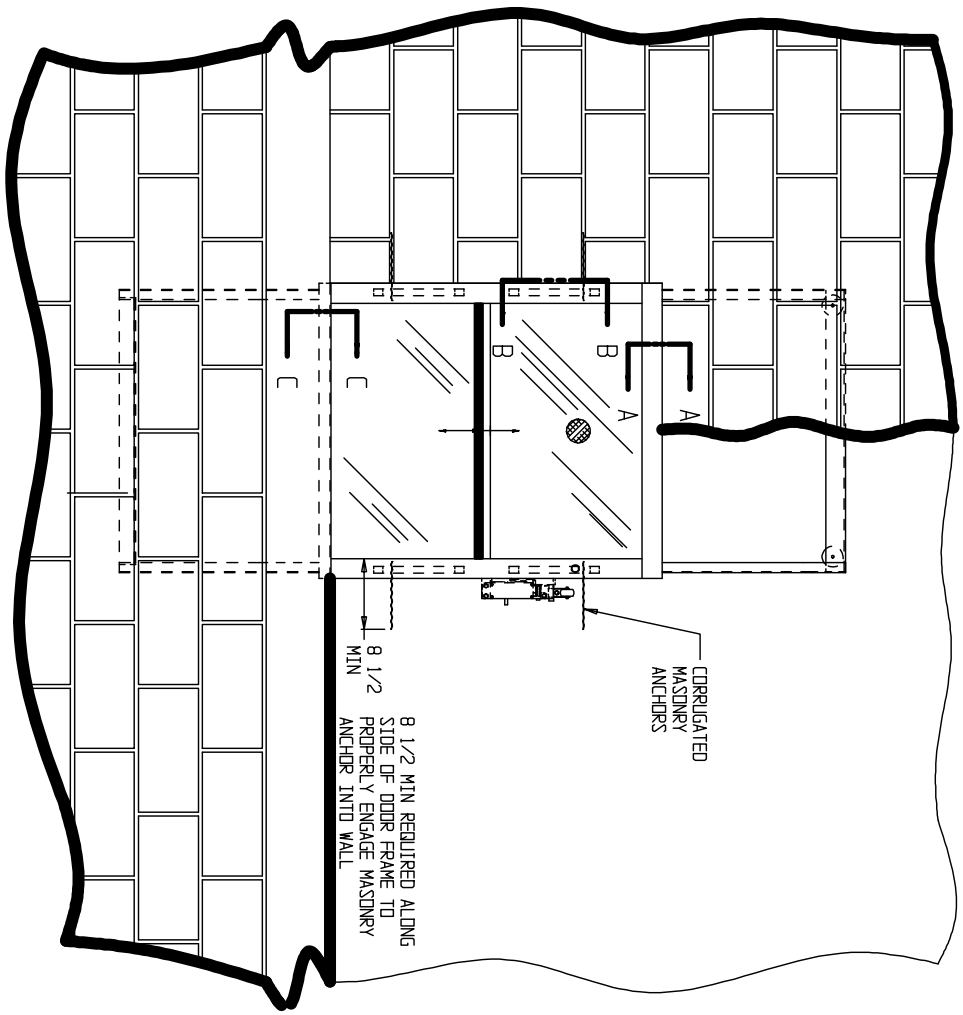
NOTE: AS WALL THICKNESS CHANGES, THE METHOD OF MASONRY INSTALLATION WILL CHANGE ACCORDINGLY. THIS DRAWING SHOULD BE USED ONLY AS A REFERENCE.



ONLY DOOR FRAME IS SHOWN IN SECTION DETAILS FOR SIMPLICITY



HOISTWAY TO BE BUILT BEFORE DUMBWATER IS INSTALLED EXCEPT THE WALLS ARE TO BE OMITTED WHERE HOISTWAY DOORS OCCUR UNTIL THE DUMBWATER IS INSTALLED & HOISTWAY DOORS ARE SET IN PLACE



TITLE: TYPICAL VARIATION OF MASONRY CONSTRUCTION WITH KAKKA UL LABELED FLOOR LOADING BI PARTING LEVEL 4

L.D. BY	DATE REQ	DWG NO.	JOB NO.
APPROVED	PAINIT	-B-	JJP
DATE L.D.	SHEET 1 OF 1	1000-725	
SCALE 1/16" = 1"	# REQ'D		

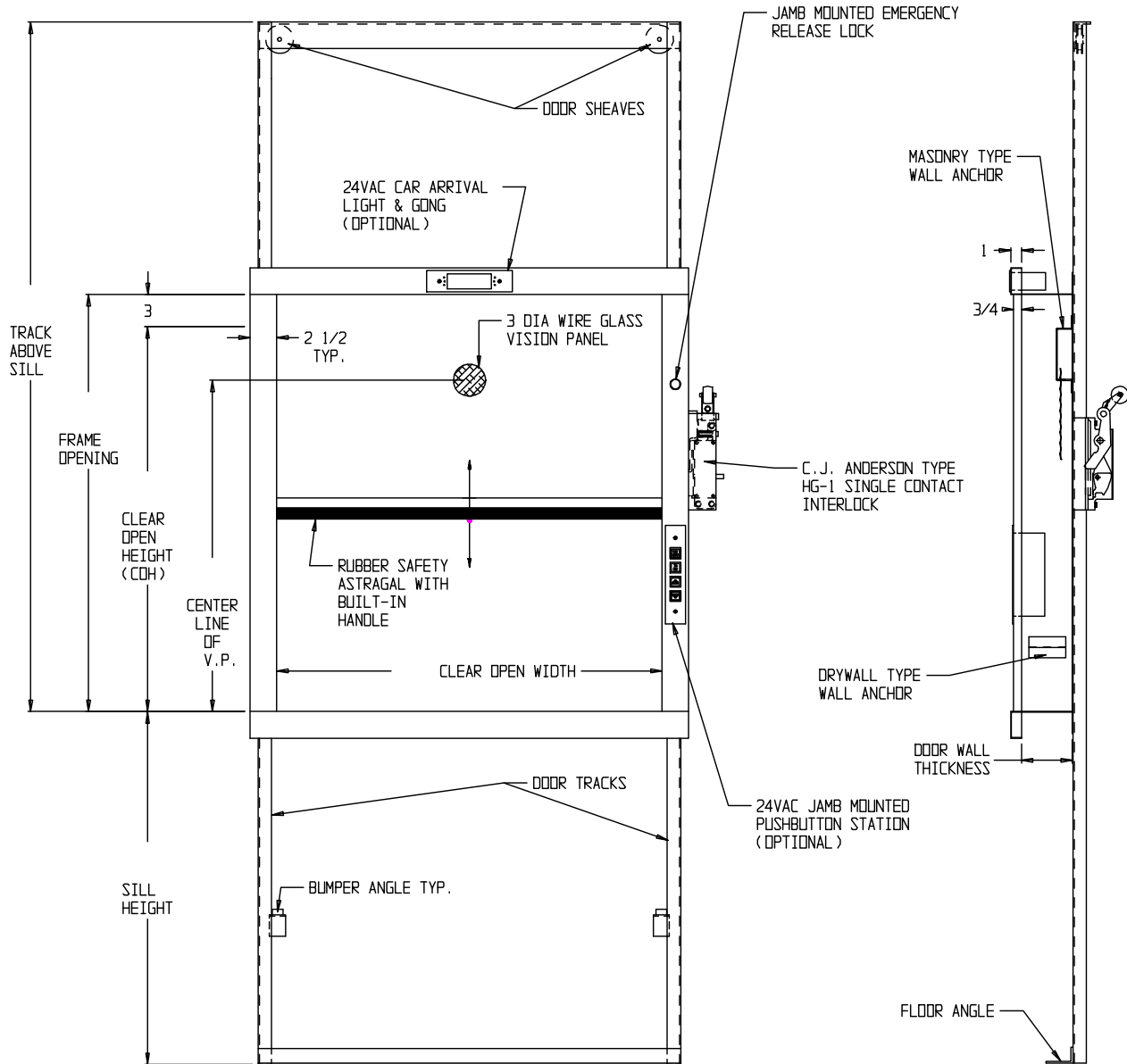
**INCLINATOR**  
COMPANY OF AMERICA  
HARRISBURG, PA



BUTTON VOLTAGE  
24 V.A.C.

ARRIVAL LIGHT  
24 V.A.C.

WALL CONSTRUCTION  
DRYWALL | MASONRY



EQUATIONS

TRACK ABOVE SILL =  $(COH/2) + COH + 7 1/2$  MIN.  
 TRACK BELOW SILL =  $(COH/2) + 2 1/2$   
 CENTERLINE OF V.P. = FRAME OPENING - 8

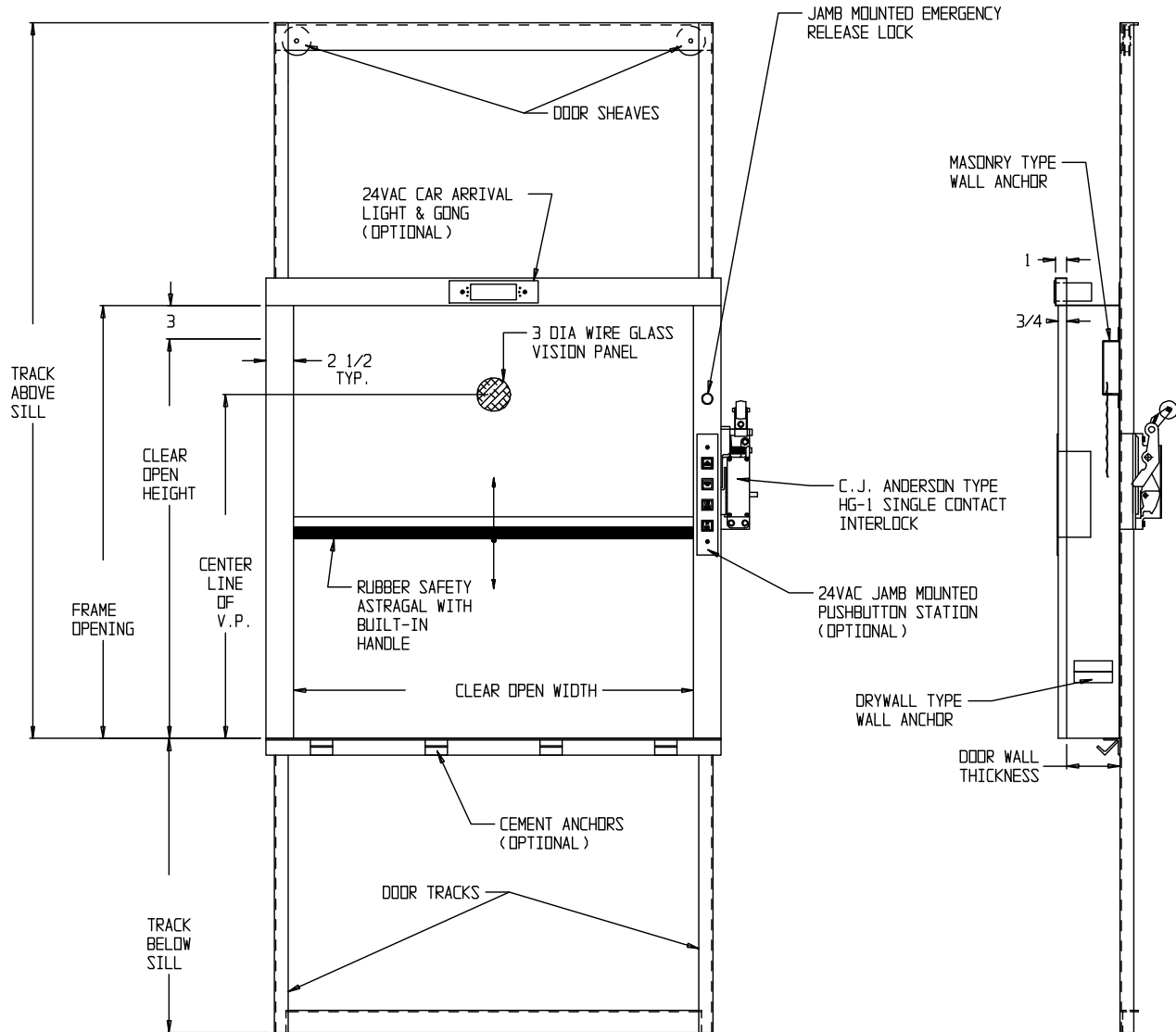
MATERIAL: 16 GA. STAINLESS STEEL - #4 FINISH OR 16 GA. PRIMED PLAIN STEEL

JOB NAME	CUSTOMER	REVISIONS			
		SYM.	DATE	DESCRIPTION	BY
SHIP TO	TITLE: DUMBWAITER UL "B" LABELED BI-PARTING COUNTER LOADING DOOR				LEVEL 1 2/8/06
	L.O. BY	DATE REQ			
	APPROVED	PAIN			
	DATE L.O.	SHEET OF			
	SCALE 3/32" = 1"	# REQ'D			
			-B-	DWG NO. JJP 1000-709	JOB NO.

BUTTON VOLTAGE  
24 V.A.C.

ARRIVAL LIGHT  
24 V.A.C.

WALL CONSTRUCTION  
DRYWALL | MASONRY

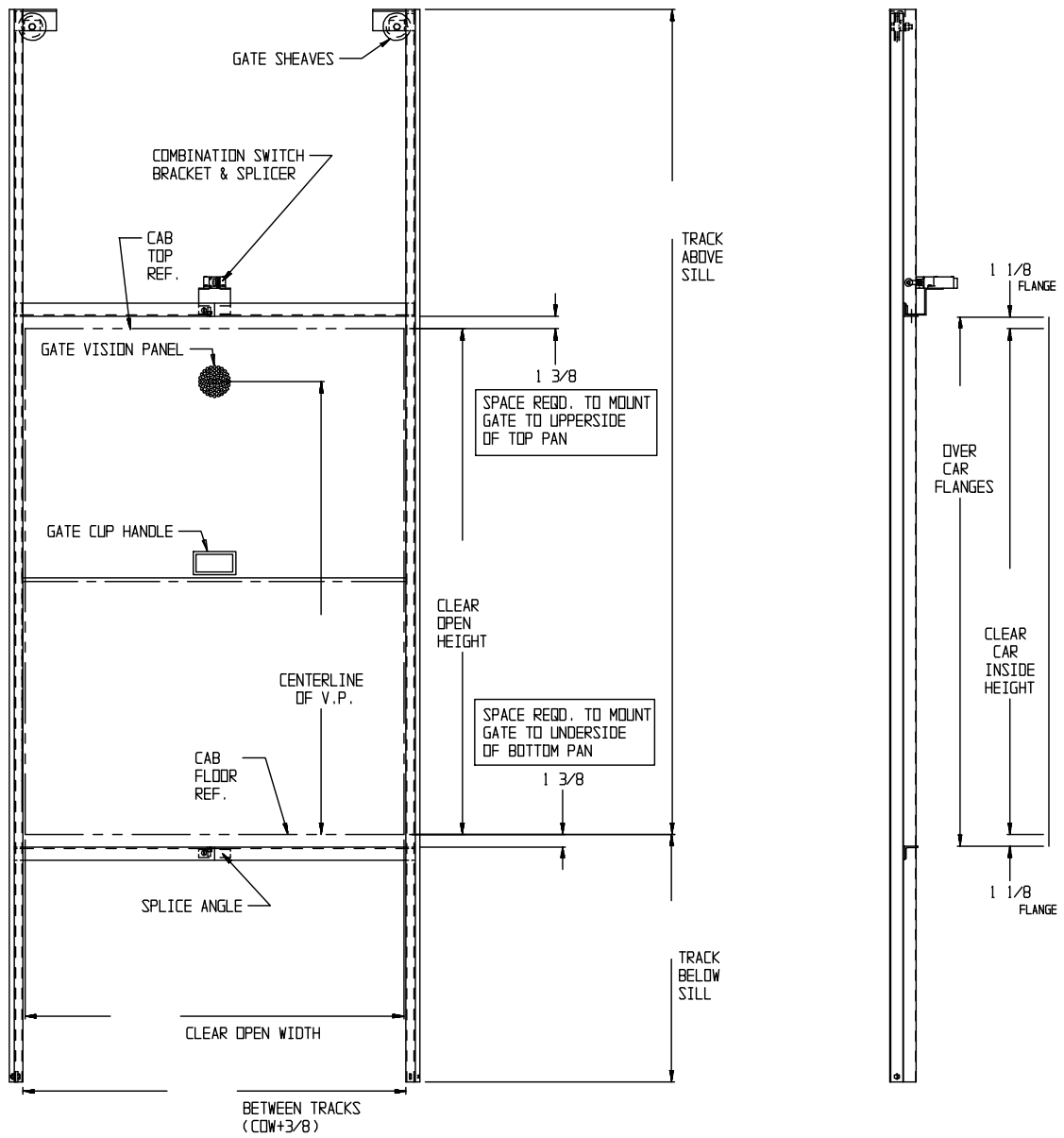


EQUATIONS

TRACK ABOVE SILL = (COH/2) + COH + 7 1/2  
 TRACK BELOW SILL = (COH/2) + 2 1/2  
 CENTERLINE OF V.P. = FRAME OPENING - 8

MATERIAL: 16 GA. STAINLESS STEEL - #4 FINISH OR 16 GA. PRIMED PLAIN STEEL

JOB NAME	CUSTOMER	REVISIONS				
		SYM.	DATE	DESCRIPTION	BY	
SHIP TO	TITLE: DUMBWAITER UL "B" LABELED BI-PARTING FLOOR LOADING DOOR				LEVEL 2 2/8/06	
L.O. BY		DATE REQ				
APPROVED		PAINT				
DATE L.O.		SHEET OF				
SCALE	3/32" = 1"	#	REQ'D	-B-	DWG NO. 1000-709 JJJ	JOB NO.

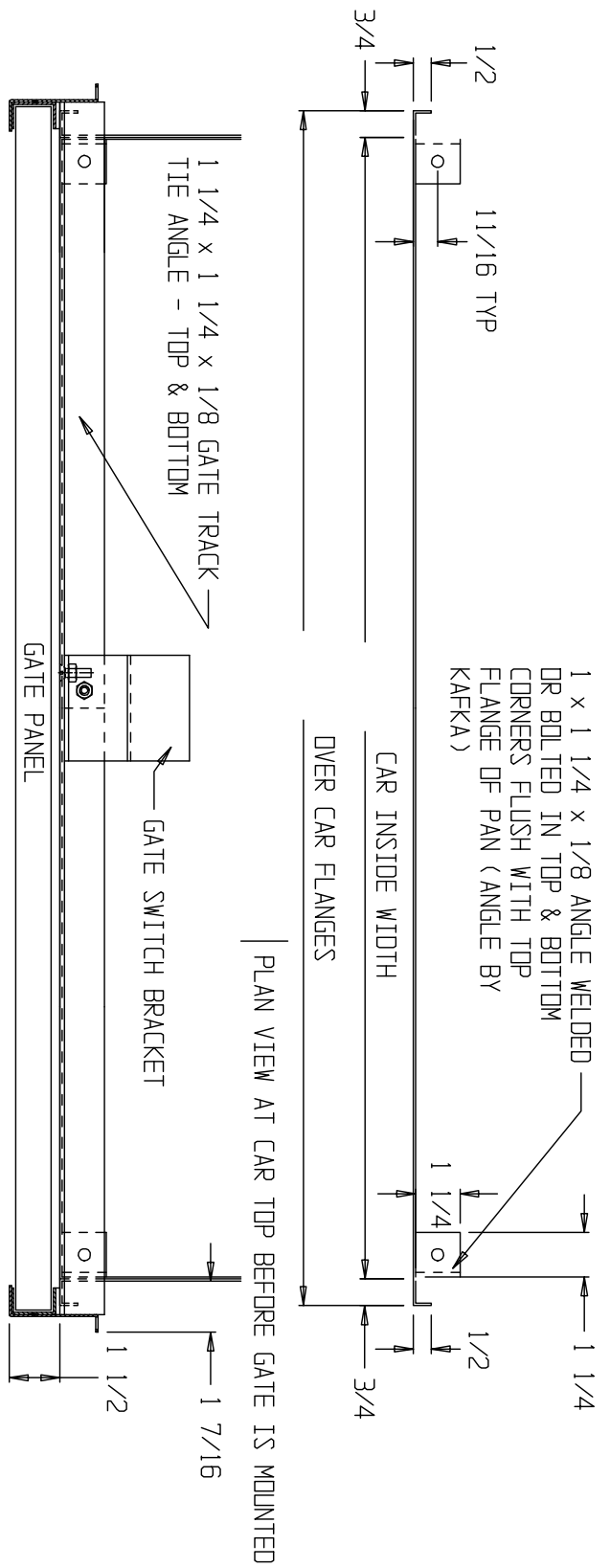


EQUATIONS

$TRACK\ ABOVE\ SILL = (CDH/2) + CDH + 6\ 5/16$   
 $TRACK\ BELOW\ SILL = (CDH/2) + 1\ 1/4$   
 $CENTERLINE\ OF\ V.P. = CDH - 5$

MATERIAL: 16 GA. STAINLESS STEEL - #4 FINISH OR 16 GA. PRIMED PLAIN STEEL

JOB NAME		CUSTOMER		REVISIONS			
		SYM.	DATE	DESCRIPTION	BY		
SHIP TO		TITLE: DUMBWAITER SINGLE OPENING BI-PARTING MANUAL GATE TRACK ASSEMBLY				LEVEL 1 8/24/05	
L.O. BY JJP		DATE REQ					
APPROVED		PAINT					
DATE L.O.		SHEET OF					
SCALE 3/32" = 1"		# REQ'D					
		-B-		DWG NO. JJP 1000-430	JOB NO.		



FOR REFERENCE ONLY

PLAN VIEW AT CAR TOP AFTER GATE IS MOUNTED

JOB NAME CUSTOMER

SYM.	DATE	DESCRIPTION	BY

SHIP TO TITLE: PLAN VIEW AT CAR TOP OF BI-PARTING CAR GATE FOR INCLINATOR DUMBWAITER LEVEL 1 8/24/05

L.O. BY	DATE REQ	<p style="text-align: center;"> <b>INCLINATOR</b>          COMPANY OF          AMERICA  <small>HARRISBURG, PA</small> </p>
APPROVED	PAINT	
DATE L.O.	SHEET	
SCALE N.T.S.	# REQ'D	

-A- DWG NO. 1000-428 JOB NO. JJP