

ORDER REFERENCE

PROJECT: 500# DUMBWAITER
MACHINE ABOVE

TYPICAL DRAWING FOR REFERENCE ONLY.
NOT TO BE USED FOR CONSTRUCTION

SPECIFICATIONS

MODEL: DW-500 (SLIDE-UP DOORS AND GATES)

LANDINGS: 2

OPENING: EAST-WEST

CAPACITY: 500#

SPEED: 50 F.P.M.

SUSPENSION MEANS: 1 WIRE ROPE 5,400 LBS. EHS
STEEL 1/4" x 8 x 19 IWRC

CAR CONSTRUCTION: STAINLESS STEEL
OR PAINTED STEEL

NOTE: ALL MANUFACTURER SUPPLIED CAR AND EQUIPMENT OPTIONS ARE NOTED ON THE CONFIRMING ORDER SHEET.

DISCLAIMER: ONCE DRAWINGS HAVE BEEN APPROVED, SIGNED AND WITHIN 5 DAYS OF PRODUCTION, THE CUSTOMER WILL BEAR ALL RESPONSIBILITY AND LIABILITY OF FINISHED UNIT.


PLEASE REFER ANY QUESTION TO YOUR SALES REPRESENTATIVE

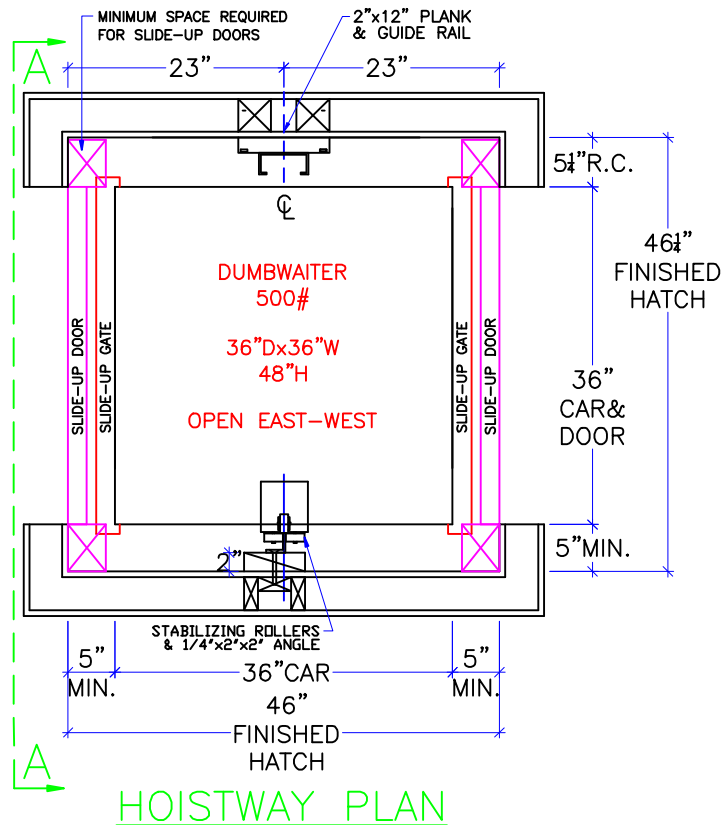
APPROVED

UNAPPROVED

SIGNATURE

DATE

DWG VIEW	PART NUMBER	REV. DATE
COVER SHEET	TYPICAL	-
 DRAWING TITLE	DRAWING NO.	-
DW500 SLIDE-UP OPEN EAST-WEST	DW-014	-
PAGE:	DRAWN BY:	DWG. DATE
1/4	B. BRATTEN	JAN. 2014
JOB OR APP.#	DEALER P.O.#	DWG. SCALE
-	-	1:24
REV. LEVEL (1-3)		-



SEE "LOAD CAPACITY CALCULATOR"
FOR OTHER POSSIBLE
DW 500# CAB DIMENSIONS

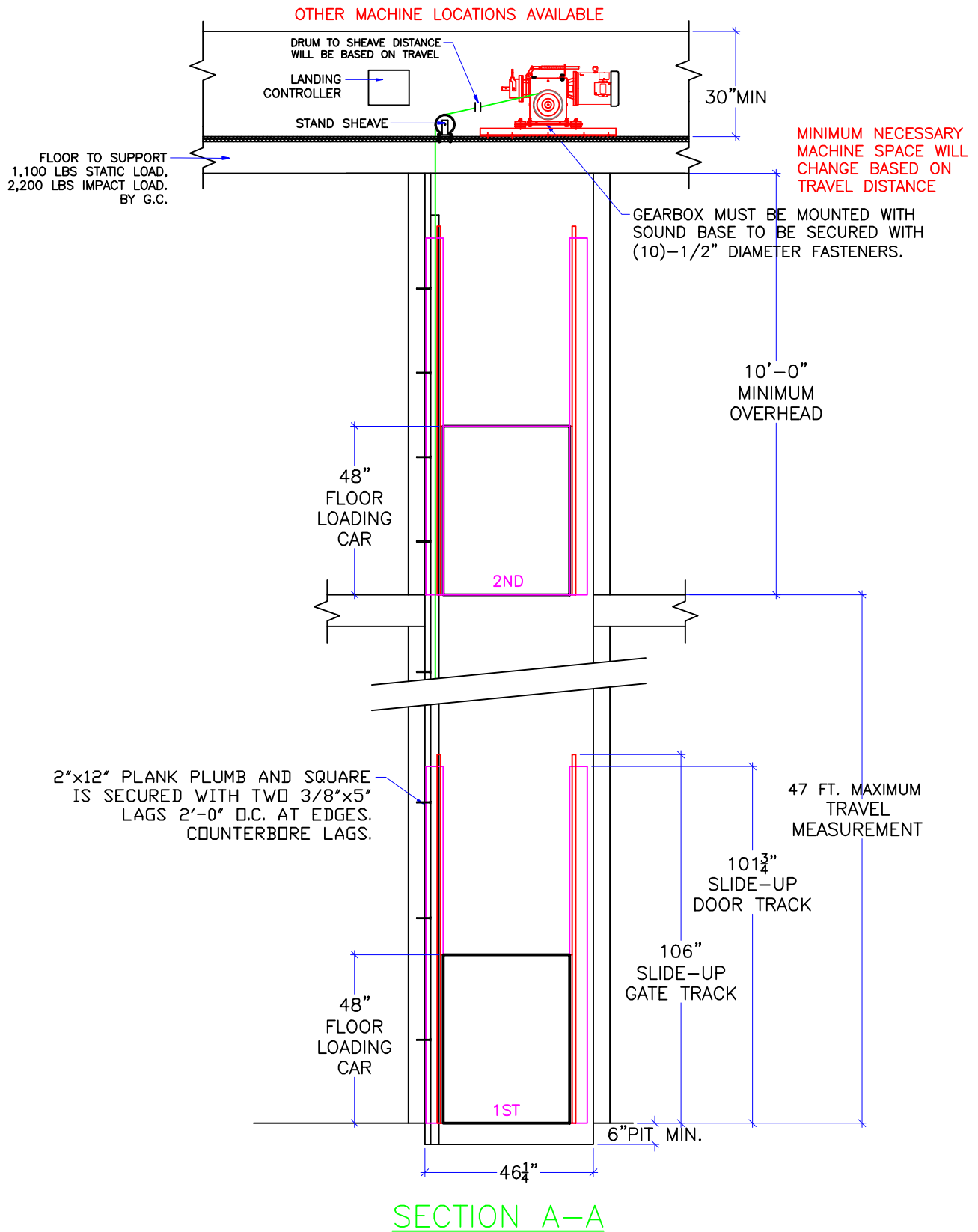
NOTE:
ALL HOISTWAY CONSTRUCTION MUST COMPLY WITH NATIONAL, STATE,
AND LOCAL CODES. HOISTWAY MUST BE PLUMB AND STRAIGHT FROM
TOP TO BOTTOM WITH NO PROJECTIONS INTO THE HOISTWAY.

NOTE:
G.C. TO BUILD OUT HOISTWAY
AS NEEDED TO MAINTAIN 3"
REQUIRED FOR STABILIZER.

NOTICE TO ELECTRICAL CONTRACTOR:

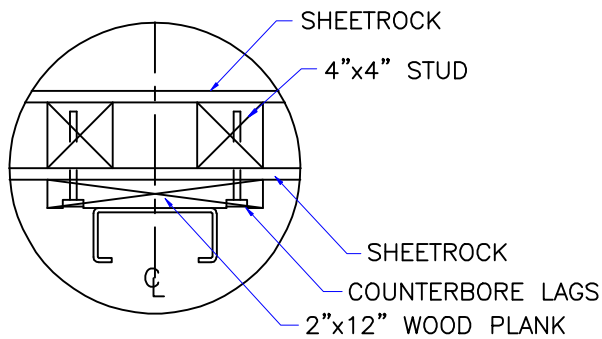
- ALL ELECTRICAL WIRING MUST BE DONE BY A JOURNEYMAN MECHANIC AND MUST MEET ALL NATIONAL, STATE, AND LOCAL CODES.
- BRING (3) #10 W/GND FROM RESIDENCE INCOMING POWER PANEL 30AMP BREAKER(240V, NEUTRAL, GROUND)TO THE MACHINE ROOM.
- BRING (2) #12 W/GND FROM RESIDENCE INCOMING POWER PANEL 20AMP GFI BREAKER(120V, NEUTRAL, GROUND)TO THE MACHINE ROOM.
- REQUIRED LOW VOTAGE WIRING IS SUPPLIED BY MANUFACTURER. ALL EXTENSIONS ADDITIONS, ETC. SHALL BE DONE WITH THE SAME SIZE AND TYPE OF WIRE AS ORIGINALLY SUPPLIED BY THE MANUFACTURER.
- ALL MEANS FOR ACCESS TO EQUIPMENT SHALL BE PROVIDED WITH A LOCK. ALL SHAFT DOORS MUST BE INTERLOCKED.

<p>DWG VIEW HOISTWAY LAYOUT</p>	<p>PART NUMBER TYPICAL</p>	<p>REV.DATE</p>
<p>INCLINATOR COMPANY OF AMERICA HARRISBURG, PA</p>	<p>DRAWING NO. DW-014</p>	<p>— — —</p>
<p>DRAWING TITLE DW500 SLIDE-UP OPEN EAST-WEST</p>	<p>JOB OR APP.# —</p>	<p>REV.LEVEL(1-3) —</p>
<p>PAGE: 2/4</p>	<p>DRAWN BY: B.BRATTEN</p>	<p>DWG. DATE JAN. 2014</p>
<p>DEALER P.O.# —</p>	<p>DWG. SCALE 1:24</p>	<p>—</p>



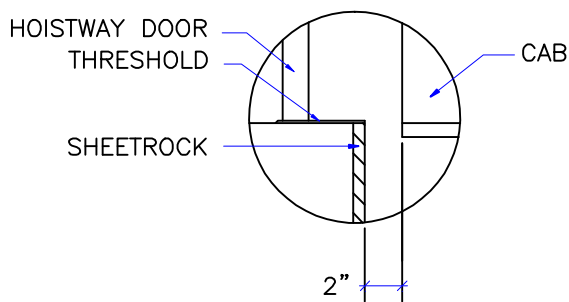
DWG VIEW		PART NUMBER		REV. DATE		
SECTION A-A		TYPICAL		-		
DRAWING TITLE		DRAWING NO.		-		
DW500 SLIDE-UP OPEN EAST-WEST		DW-014		-		
PAGE:	DRAWN BY:	DWG. DATE	JOB OR APP.#	DEALER P.O.#	DWG. SCALE	REV. LEVEL(1-3)
3/4	B. BRATTEN	JAN. 2014	-	-	1:24	-





NOTE:
WHEN STUD AND SHEETROCK CONSTRUCTION IS USED ON THE GUIDE RAIL SUPPORT WALL 4"x4" STUDDING IS NEEDED BEHIND THE 2"x12" PLANK.

RAIL DETAIL



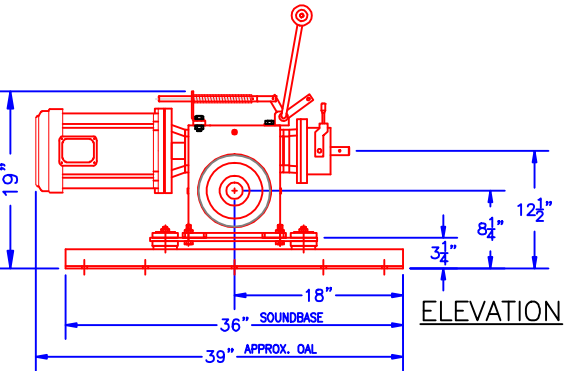
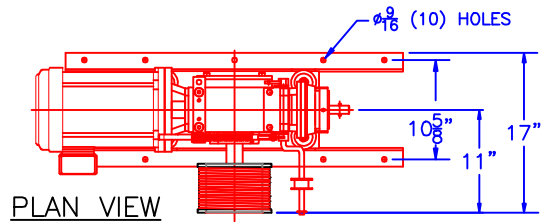
DOOR SILLS TO BE INSTALLED BY G.C. AFTER LIFT SUPPLIER HAS INSTALLED A RUNNING PLATFORM.

SILL DETAIL

FOR DOOR DETAILS
SEE ATTACHED
DRAWINGS

DOOR FRAME DETAIL

SEE "LOAD CAPACITY CALCULATOR"
FOR OTHER POSSIBLE
DW 500# CAB DIMENSIONS



1. MACHINE ROOM SIZE REQUIREMENTS MAY CHANGE WITH TRAVEL DISTANCE
2. MACHINE ROOM CAN BE LOCATED ABOVE OR BELOW HOISTWAY
3. SHEAVE COMBINATIONS WILL CHANGE WITH ALTERNATE MACHINE ROOM LOCATIONS

500# DUMBWAITER MACHINE DIMENSIONS

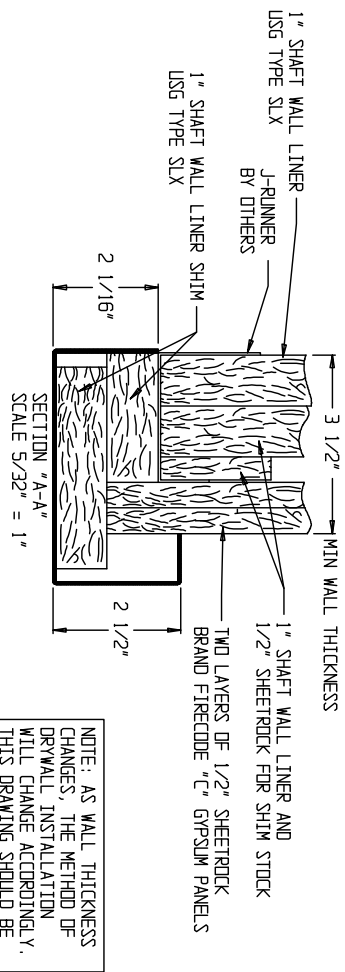
1. REACTIONS ON ALL SHEAVES AND MOUNTINGS
STATIC = 1,100 LBS.
IMPACT = 2,200 LBS.
2. RAIL FASTENING TO 2" x 12" PLANK
#14 x 1 3/4" TYPE A S.M.S. RAIL IS PRE-DRILLED AT FACTORY.
3. BOLT FASTENING OF CAR TO TROLLEY
1/2" - 13 x 2 1/2" SOCKET HD CAP SCREWS.

TECHNICAL DATA

DWG VIEW		PART NUMBER		REV. DATE		
DETAILS, DATA, CODES		TYPICAL		-		
DRAWING TITLE		DRAWING NO.		-		
DW500 BI-PART OPEN EAST-WEST		DW-013		-		
PAGE:	DRAWN BY:	DWG. DATE	JOB OR APP.#	DEALER P.O.#	DWG. SCALE	REV. LEVEL(1-3)
4/4	B. BRATTEN	JAN. 2014	-	-	1:24	-

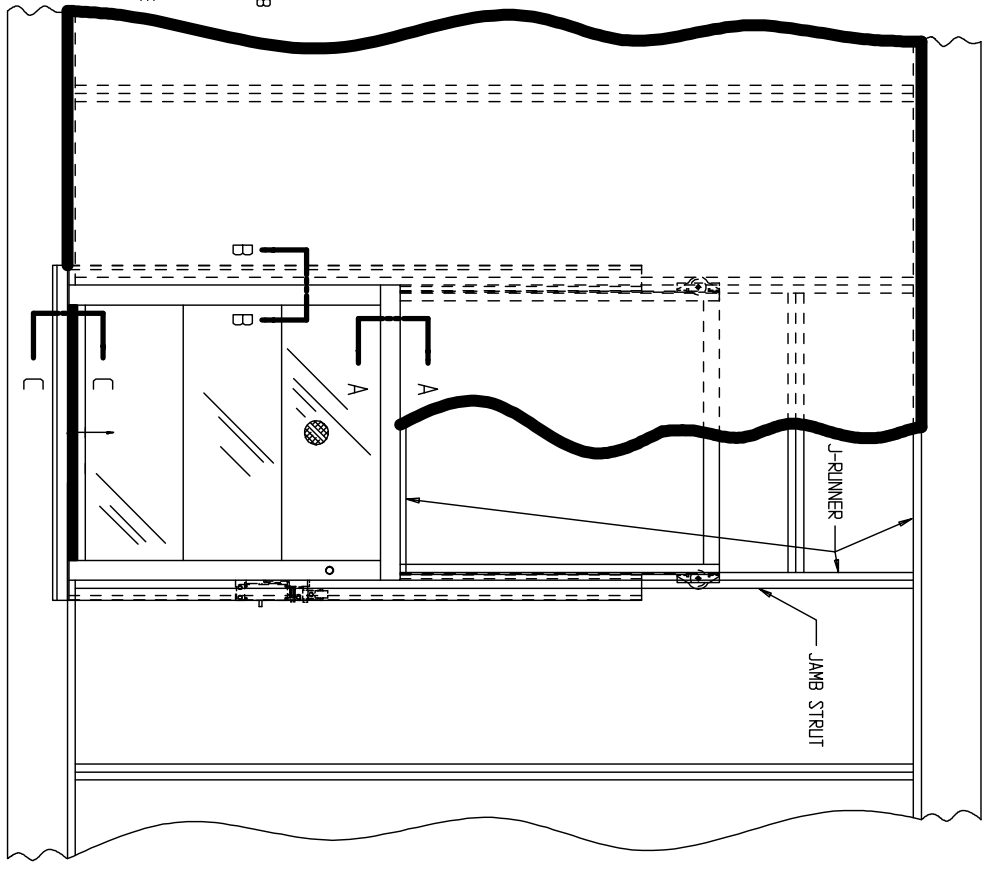
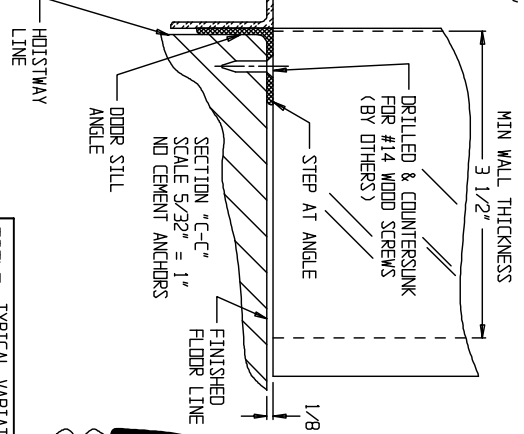
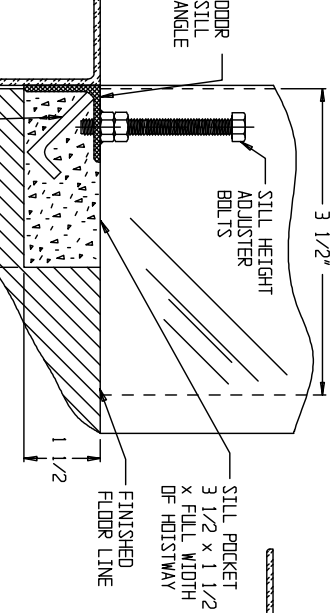
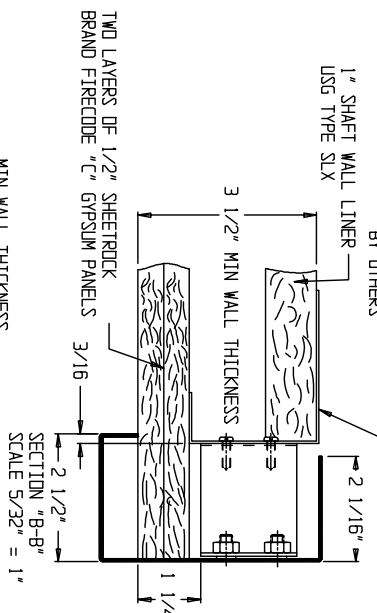


WALL TO BE BUILT TO UNDERWRITERS
LABORATORIES STANDARD W438
WALL DESIGN



NOTE: AS WALL THICKNESS CHANGES, THE METHOD OF DRYWALL INSTALLATION WILL CHANGE ACCORDINGLY. THIS DRAWING SHOULD BE USED ONLY AS A REFERENCE.

ONLY DOOR FRAME IS SHOWN IN SECTION DETAILS FOR SIMPLICITY

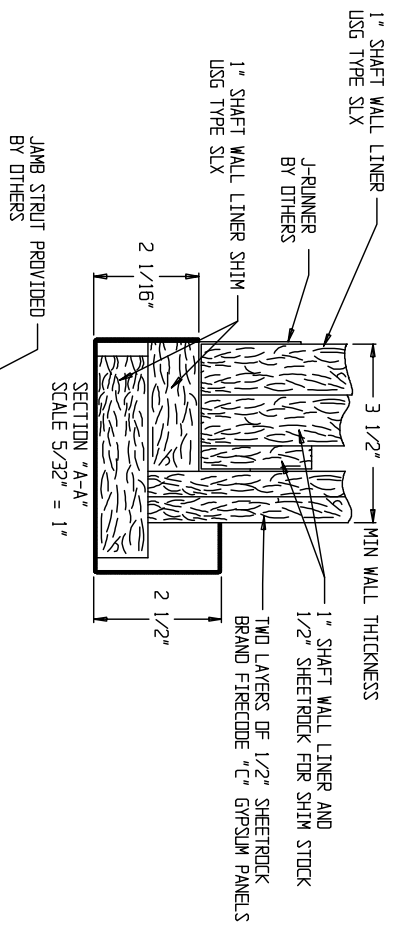


HOISTWAY TO BE BUILT BEFORE DUMBWATER IS INSTALLED EXCEPT THE WALLS ARE TO BE OMITTED WHERE HOISTWAY DOORS OCCUR UNTIL THE DUMBWATER IS INSTALLED & HOISTWAY DOORS ARE SET IN PLACE

TITLE: TYPICAL VARIATION OF DRYWALL CONSTRUCTION WITH KAKKA UL LABELED FLOOR LOADING SLIDE UP		LEVEL: 1	
L.D. BY	DATE REQ	1/9/06	
APPROVED	PAINT		
DATE L.D.	SHEET 1 OF 1		
SCALE 1/16" = 1"	# REQ'D	DWG NO. 1000-726	JOB NO.

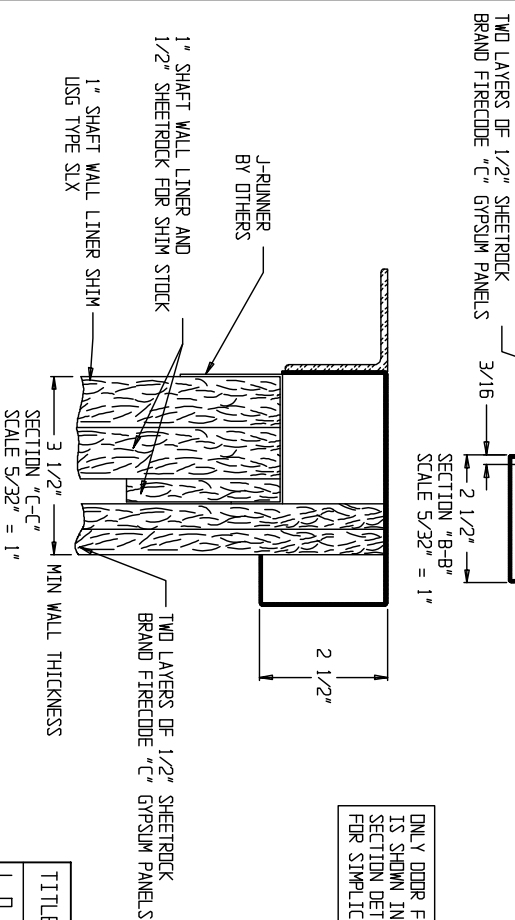
INCLINATOR
COMPANY OF AMERICA
HARRISBURG, PA

WALL TO BE BUILT TO UNDERWRITERS
LABORATORIES STANDARD W438
WALL DESIGN

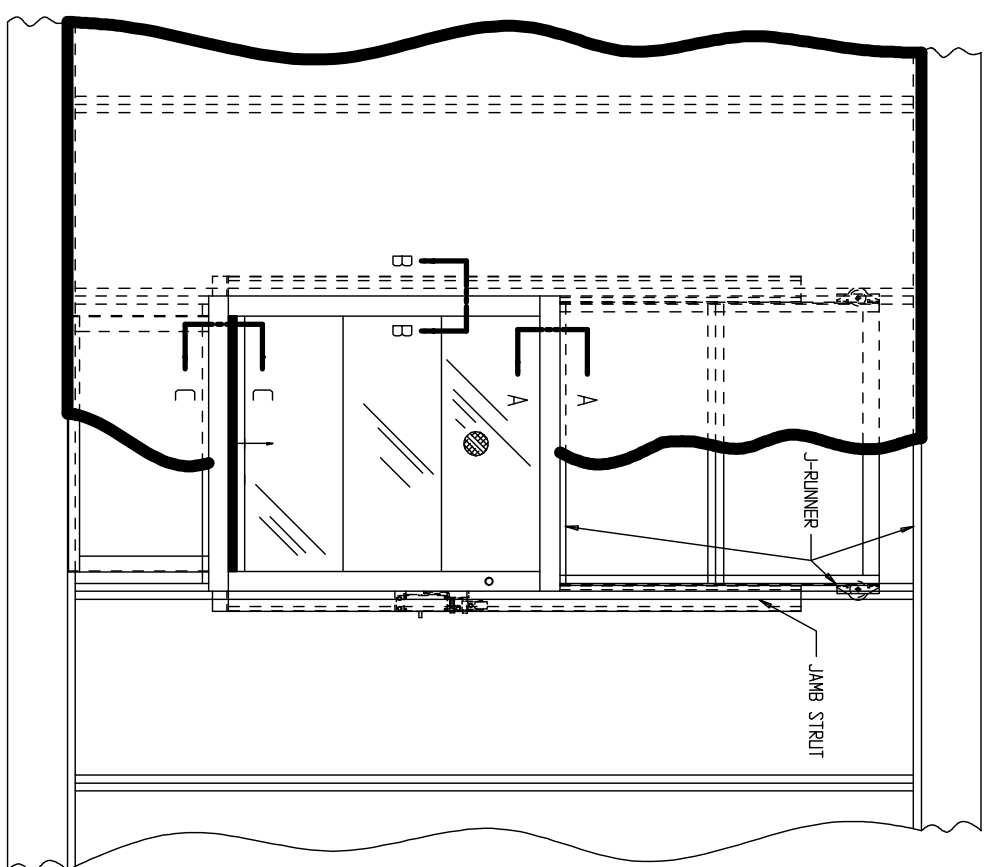


NOTE: AS WALL THICKNESS
CHANGES, THE METHOD OF
DRYWALL INSTALLATION
WILL CHANGE ACCORDINGLY.
THIS DRAWING SHOULD BE
USED ONLY AS A REFERENCE.

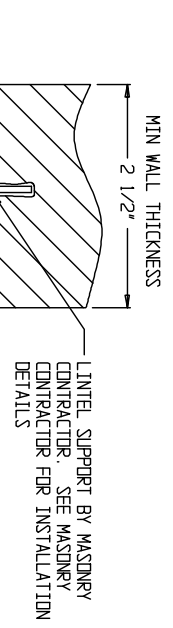
ONLY DOOR FRAME
IS SHOWN IN
SECTION DETAILS
FOR SIMPLICITY



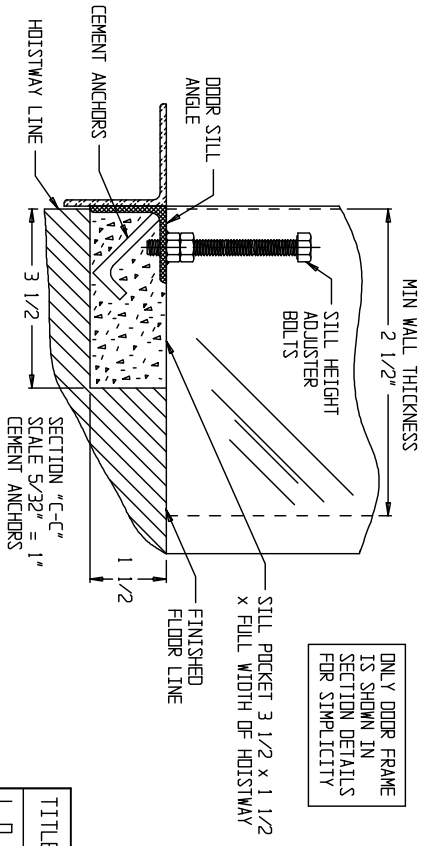
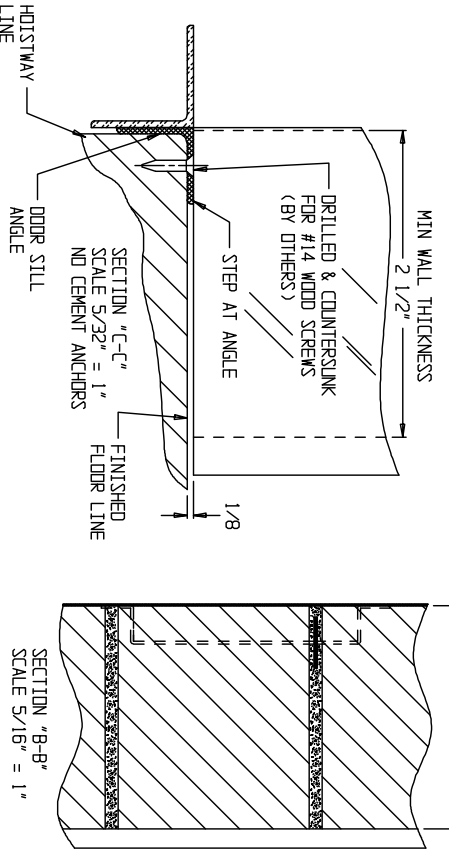
HOISTWAY TO BE BUILT BEFORE DUMBWATER IS INSTALLED
EXCEPT THE WALLS ARE TO BE OMITTED WHERE HOISTWAY
DOORS OCCUR UNTIL THE DUMBWATER IS INSTALLED &
HOISTWAY DOORS ARE SET IN PLACE



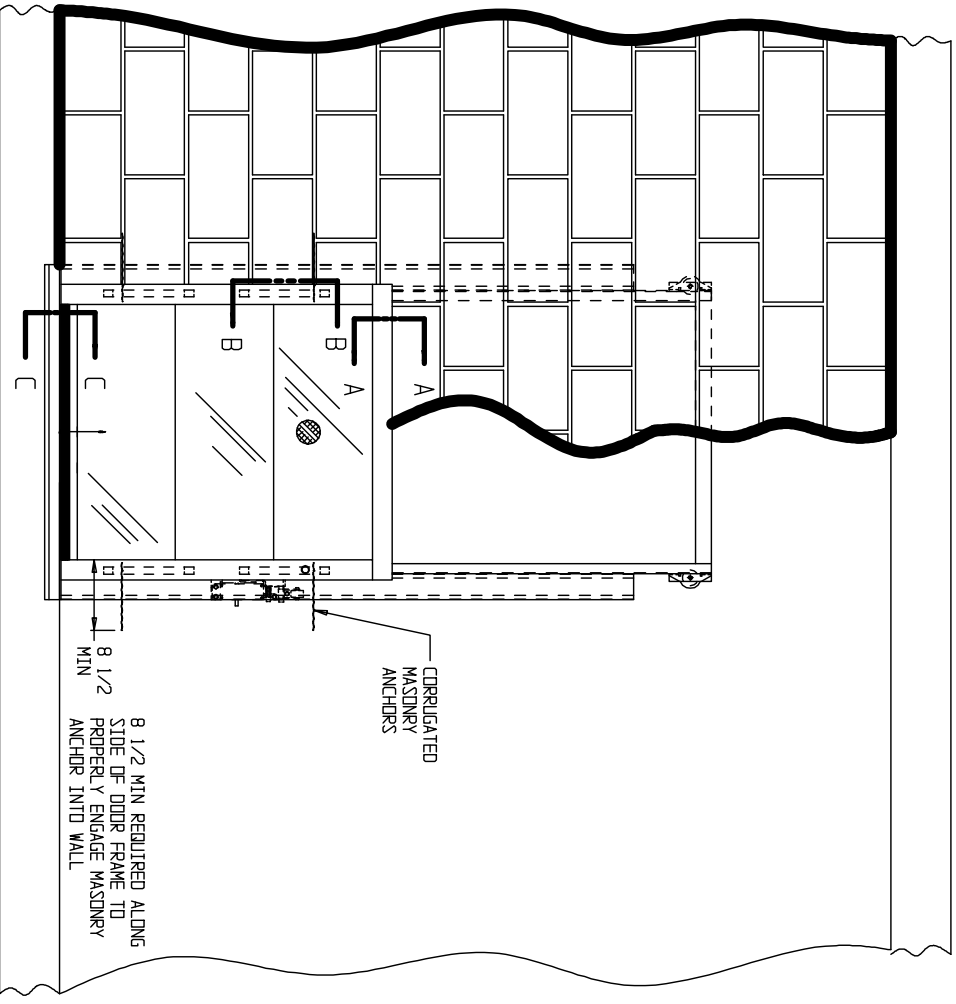
L. D. BY		DATE REQ		<p>INCLINATOR COMPANY OF AMERICA HARRISBURG, PA</p>	<p>DWG NO. 1000-726 JOB NO. JJP</p>
APPROVED		PAINT			
DATE L. D.		SHEET 1 OF 1		LEVEL 3 1/9/06	
SCALE 1/16" = 1"		# REQ'D			
TITLE: TYPICAL VARIATION OF DRYWALL CONSTRUCTION WITH KAFKA UL LABELED COUNTER LOADING SLIDE UP DUMBWATER DOOR					



NOTE: AS WALL THICKNESS CHANGES, THE METHOD OF MASONRY INSTALLATION WILL CHANGE ACCORDINGLY. THIS DRAWING SHOULD BE USED ONLY AS A REFERENCE.



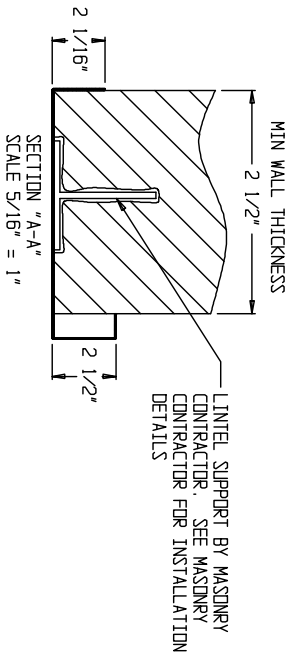
ONLY DOOR FRAME IS SHOWN IN SECTION DETAILS FOR SIMPLICITY



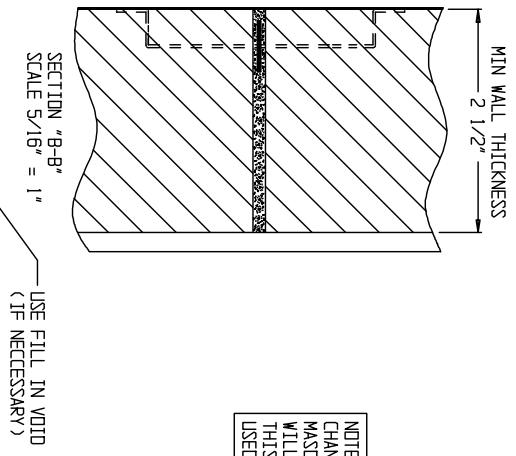
TITLE: TYPICAL VARIATION OF MASONRY CONSTRUCTION WITH KAFKA UL LABELED FLOOR LOADING SLIDE UP LEVEL 2
 DIMBWATER DOOR 1/9/06

L.D. BY	DATE REQ	INCLINATOR COMPANY OF AMERICA HARRISBURG, PA	DWG NO. 1000-726 JJP	JOB NO.
APPROVED	PAINIT			
DATE L.D.	SHEET 1 OF 1			
SCALE 1/16" = 1"	# REQ'D			

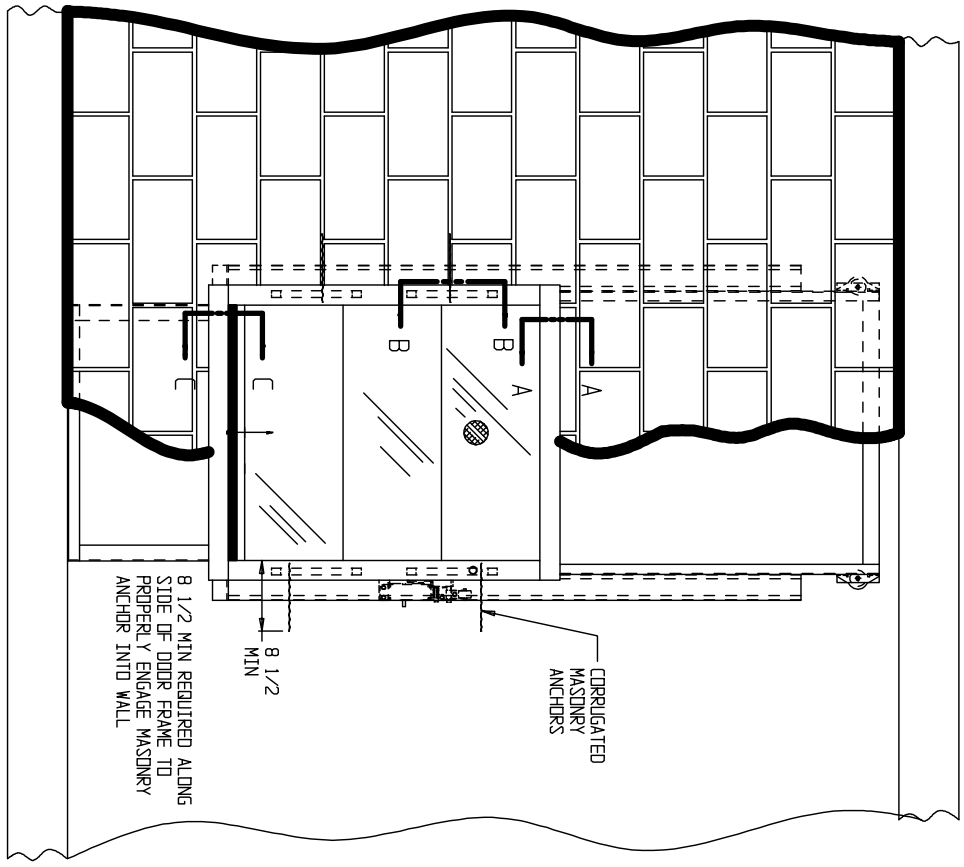
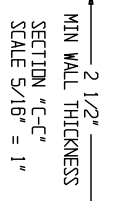
HOISTWAY TO BE BUILT BEFORE DIMBWATER IS INSTALLED EXCEPT THE WALLS ARE TO BE OMITTED WHERE HOISTWAY DOORS OCCUR UNTIL THE DIMBWATER IS INSTALLED & HOISTWAY DOORS ARE SET IN PLACE



NOTE: AS WALL THICKNESS CHANGES, THE METHOD OF MASONRY INSTALLATION WILL CHANGE ACCORDINGLY. THIS DRAWING SHOULD BE USED ONLY AS A REFERENCE.



ONLY DOOR FRAME IS SHOWN IN SECTION DETAILS FOR SIMPLICITY



HOISTWAY TO BE BUILT BEFORE DUMBWATER IS INSTALLED EXCEPT THE WALLS ARE TO BE OMITTED WHERE HOISTWAY DOORS OCCUR UNTIL THE DUMBWATER IS INSTALLED & HOISTWAY DOORS ARE SET IN PLACE

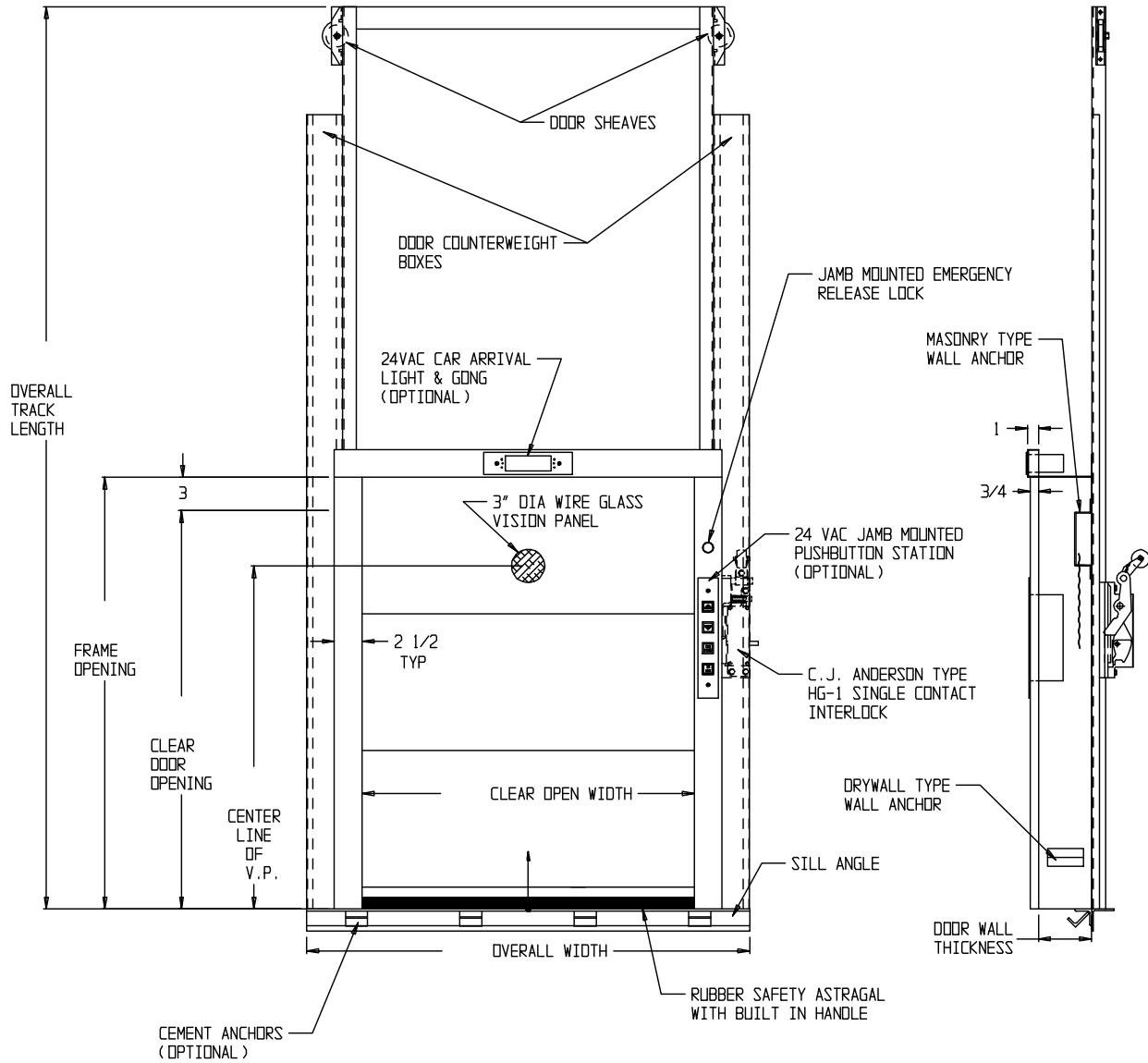
TITLE: TYPICAL VARIATION OF MASONRY CONSTRUCTION WITH KAFKA UL LABELED COUNTER LOADING SLIDE UP		LEVEL 4	
L.O. BY	DATE REQ	1/9/06	
APPROVED	PAINIT		
DATE L.O.	SHEET 1 OF 1		
SCALE 1/16" = 1"	# REQ'D		
-B- DWG NO. 1000-726		JOB NO.	
JJP			

INCLINATOR
COMPANY OF AMERICA
HARRISBURG, PA

BUUTTON VOLTAGE
24 V.A.C.

ARRIVAL LIGHT
24 V.A.C.

WALL CONSTRUCTION
DRYWALL | MASONRY



EQUATIONS

OVERALL TRACK=(2*COH)+5 5/8
 OVERALL WIDTH=COW+10
 CENTERLINE OF V.P.=FRAME OPENING-8

MATERIAL: 16 GA. STAINLESS STEEL - #4 FINISH OR 16 GA. PRIMED PLAIN STEEL

JOB NAME	CUSTOMER	REVISIONS			
		SYM.	DATE	DESCRIPTION	BY

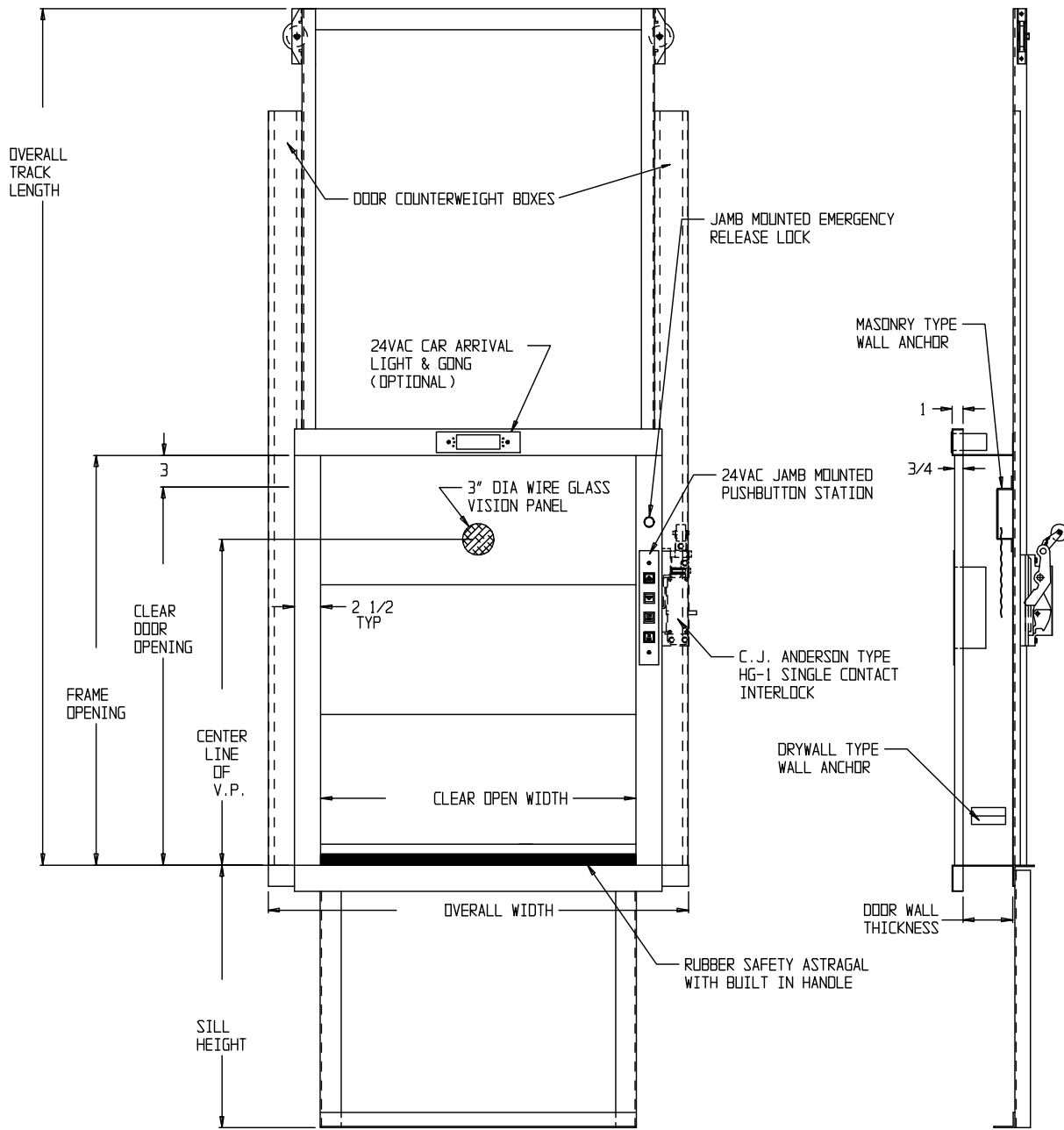
SHIP TO: TITLE: DUMBWAITER UL "B" LABELED SLIDE-UP FLOOR LOADING DOOR LEVEL 1
2/8/06

L.O. BY	DATE REQ		-B-	DWG NO. 1000-710	JOB NO.
APPROVED	PAIN				
DATE L.O.	SHEET OF				
SCALE 3/32" = 1"	# REQ'D				

BUTTON VOLTAGE
24 V.A.C.

ARRIVAL LIGHT
24 V.A.C.

WALL CONSTRUCTION
DRYWALL | MASONRY



EQUATIONS

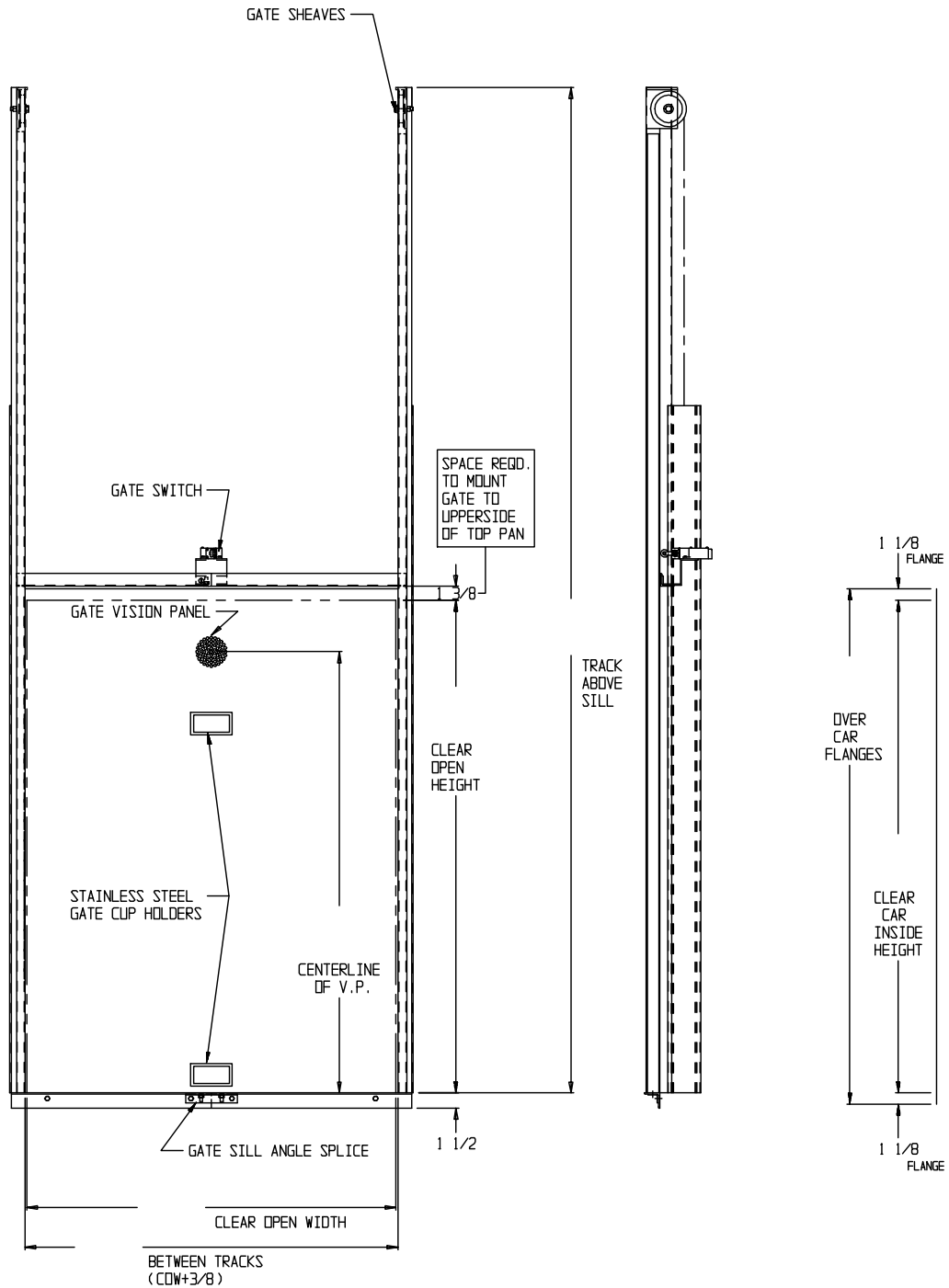
OVERALL TRACK=(2*COH)+5 5/8
 OVERALL WIDTH=COW+10
 CENTERLINE OF V.P.=FRAME OPENING-8

MATERIAL: 16 GA. STAINLESS STEEL - #4 FINISH OR 16 GA. PRIMED PLAIN STEEL

JOB NAME	CUSTOMER	REVISIONS			
		SYM.	DATE	DESCRIPTION	BY

SHIP TO: TITLE: DUMBWAITER UL "B" LABELED SLIDE-UP COUNTER LOADING DOOR LEVEL 2
2/8/06

L.O. BY	DATE REQ	
APPROVED	PAIN	
DATE L.O.	SHEET OF	
SCALE 3/32" = 1"	# REQ'D	
-B-	DWG NO. JJP 1000-710	JOB NO.

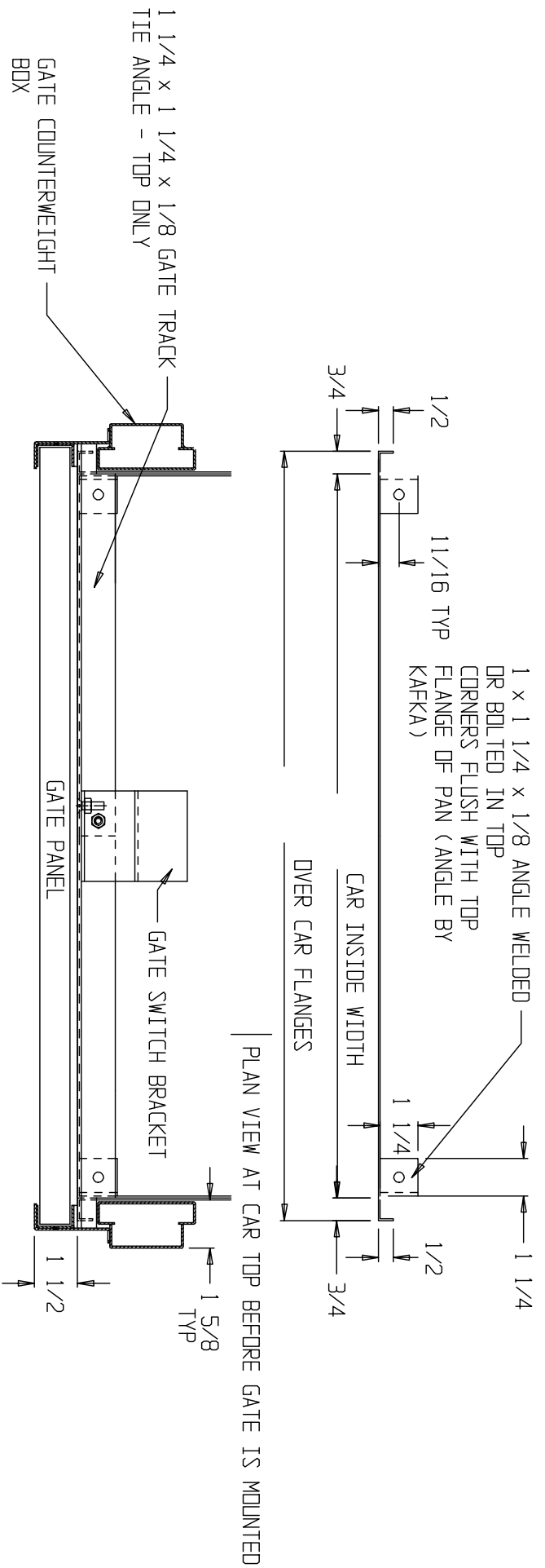


EQUATIONS

TRACK ABOVE SILL = (COH * 2) + 9
 CENTERLINE OF V.P. = COH - 5


MATERIAL: 16 GA. STAINLESS STEEL - #4 FINISH OR 16 GA. PRIMED PLAIN STEEL

JOB NAME		CUSTOMER		REVISIONS			
SYM.	DATE	DESCRIPTION		BY			
SHIP TO		TITLE: DUMBWAITER SINGLE OPENING SLIDE-UP MANUAL GATE TRACK ASSEMBLY FOR INCLINATOR DUMBWAITER				LEVEL 1	
L.O. BY JJP		DATE REQ				8/24/05	
APPROVED		PAINT					
DATE L.O.		SHEET OF					
SCALE 3/32" = 1"		# REQ'D		-B-	DWG NO. 1000-429	JJP	
				JOB NO.			



JOB NAME: SHIP TO: TITLE: PLAN VIEW AT CAR TOP OF SLIDE-UP CAR GATE FOR INCLINATOR DUMBWATER LEVEL 1 8/24/05

JOB NAME	CUSTOMER	SYM.	DATE	DESCRIPTION	REVISIONS	BY

L.D. BY		DATE REQ		INCLINATOR COMPANY OF AMERICA  HARRISBURG, PA
APPROVED		PAINT		
DATE L.D.		SHEET OF		
SCALE N.T.S.		# REQ'D		

-A- DWG NO. 1000-427 JOB NO. JJP