

## ORDER REFERENCE

**PROJECT:** 500# DUMBWAITER  
MACHINE BELOW

TYPICAL DRAWING FOR REFERENCE ONLY.  
NOT TO BE USED FOR CONSTRUCTION

## SPECIFICATIONS

**MODEL:** DW-500 (RETAINING LIP WITH SWING DOOR)

**LANDINGS:** 2

**CODE(S):** 4

**CAPACITY:** 500#

**SPEED:** 50 F.P.M.

**SUSPENSION MEANS:** 1 WIRE ROPE 5,400 LBS. EHS  
STEEL 1/4" x 8 x 19 IWRC

**CAR CONSTRUCTION:** STAINLESS STEEL  
OR PAINTED STEEL

NOTE: ALL MANUFACTURER SUPPLIED CAR AND EQUIPMENT OPTIONS ARE NOTED ON THE CONFIRMING ORDER SHEET.

DISCLAIMER: ONCE DRAWINGS HAVE BEEN APPROVED, SIGNED AND WITHIN 5 DAYS OF PRODUCTION, THE CUSTOMER WILL BEAR ALL RESPONSIBILITY AND LIABILITY OF FINISHED UNIT.


PLEASE REFER ANY QUESTION TO YOUR SALES REPRESENTATIVE

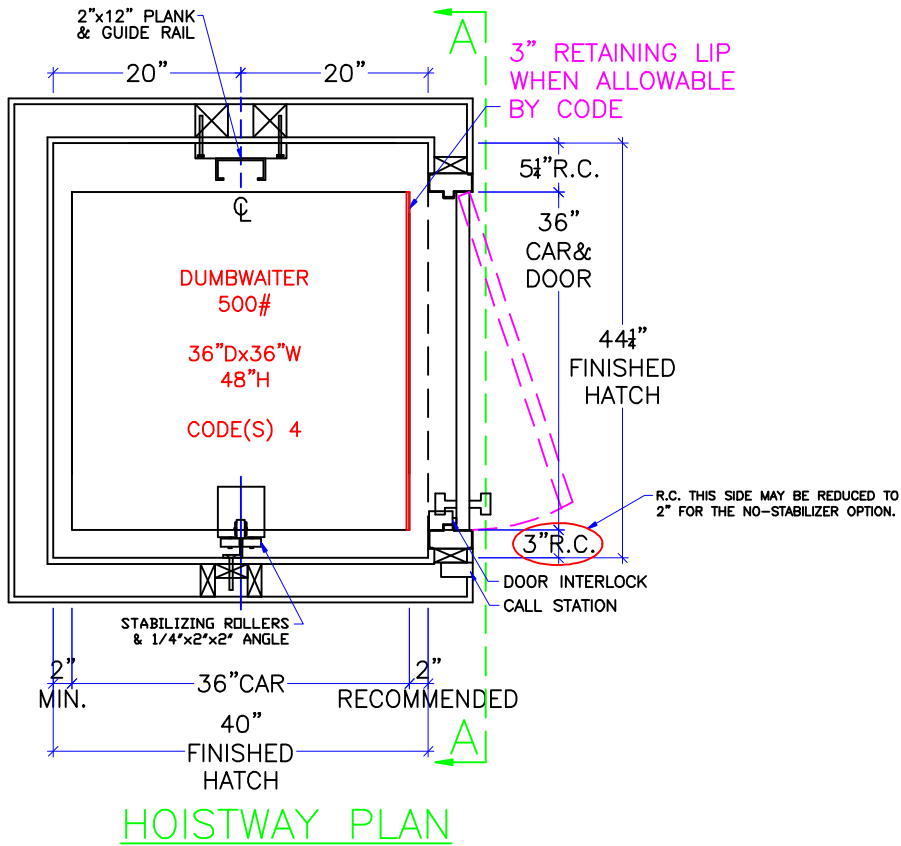
APPROVED

UNAPPROVED

\_\_\_\_\_  
SIGNATURE

\_\_\_\_\_  
DATE

<b>DWG VIEW</b>	<b>PART NUMBER</b>	<b>REV. DATE</b>
COVER SHEET	TYPICAL	-
 <b>DRAWING TITLE</b>	<b>DRAWING NO.</b>	-
DW 500 CODE 4 MR BELOW	DW-010	-
<b>PAGE:</b>	<b>DRAWN BY:</b>	<b>DWG. DATE</b>
1/4	B. BRATTEN	JAN. 2014
<b>JOB OR APP.#</b>	<b>DEALER P.O.#</b>	<b>DWG. SCALE</b>
-	-	1:24
<b>REV. LEVEL (1-3)</b>		-



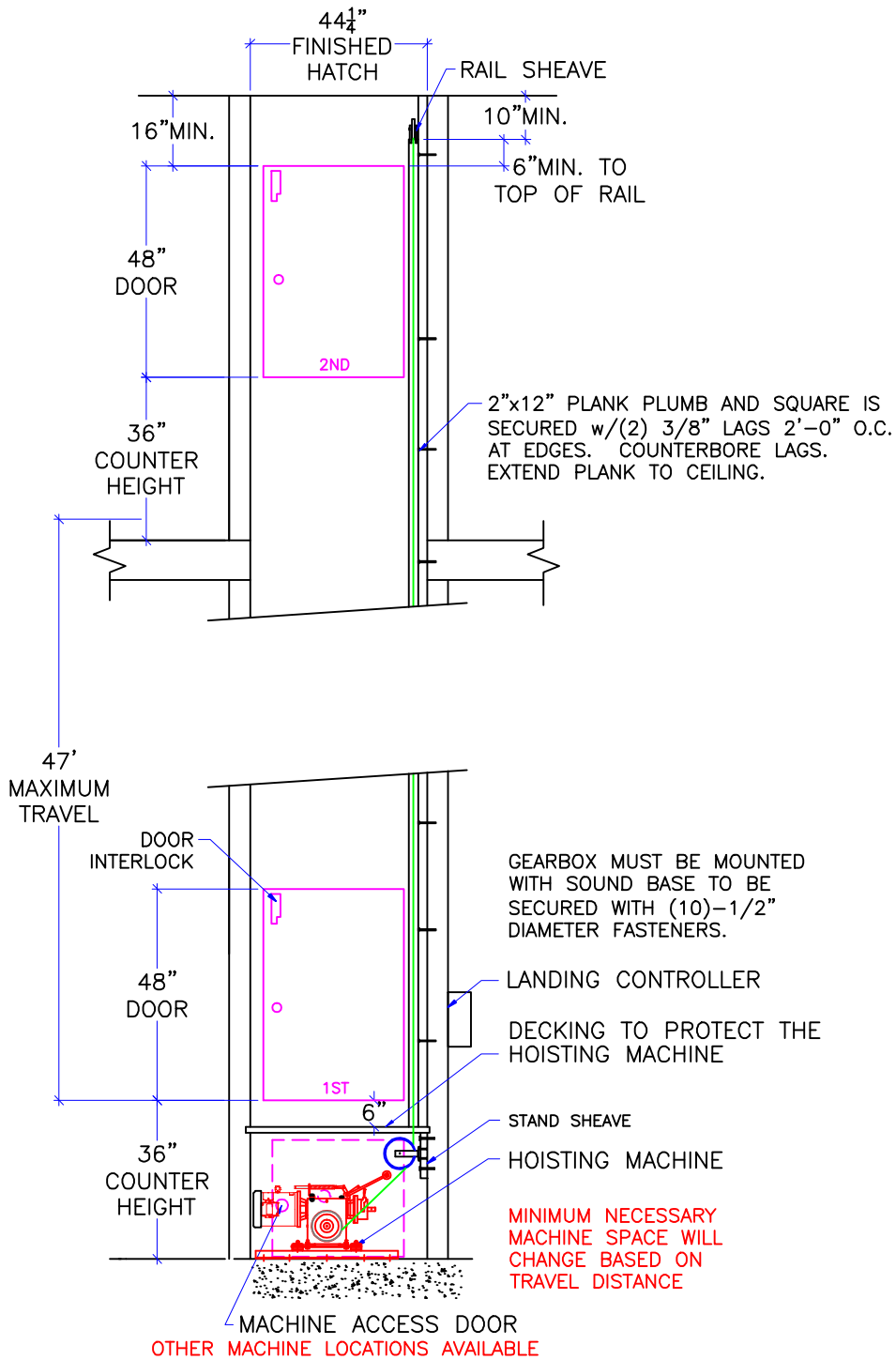
SEE "LOAD CAPACITY CALCULATOR"  
FOR OTHER POSSIBLE  
DW 500# CAB DIMENSIONS

NOTE:  
ALL HOISTWAY CONSTRUCTION MUST COMPLY WITH NATIONAL, STATE,  
AND LOCAL CODES. HOISTWAY MUST BE PLUMB AND STRAIGHT FROM  
TOP TO BOTTOM WITH NO PROJECTIONS INTO THE HOISTWAY.


**NOTICE TO ELECTRICAL CONTRACTOR:**

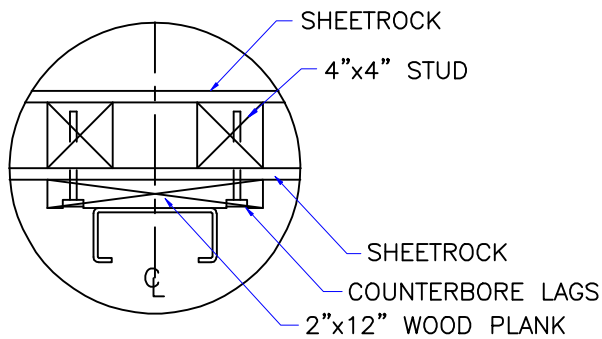
- ALL ELECTRICAL WIRING MUST BE DONE BY A JOURNEYMAN MECHANIC AND MUST MEET ALL NATIONAL, STATE, AND LOCAL CODES.
- BRING (3) #10 W/GND FROM RESIDENCE INCOMING POWER PANEL 30AMP BREAKER(240V, NEUTRAL, GROUND)TO THE MACHINE ROOM.
- BRING (2) #12 W/GND FROM RESIDENCE INCOMING POWER PANEL 20AMP GFI BREAKER(120V, NEUTRAL, GROUND)TO THE MACHINE ROOM.
- REQUIRED LOW VOLTAGE WIRING IS SUPPLIED BY MANUFACTURER. ALL EXTENSIONS ADDITIONS, ETC. SHALL BE DONE WITH THE SAME SIZE AND TYPE OF WIRE AS ORIGINALLY SUPPLIED BY THE MANUFACTURER.
- ALL MEANS FOR ACCESS TO EQUIPMENT SHALL BE PROVIDED WITH A LOCK. ALL SHAFT DOORS MUST BE INTERLOCKED.

<p>DWG VIEW</p> <p style="text-align: center;">HOISTWAY LAYOUT</p> <p><b>INCLINATOR</b> COMPANY OF AMERICA HARRISBURG, PA</p> <p style="text-align: center;">DRAWING TITLE</p> <p style="text-align: center;">DW 500 CODE 4 MR BELOW</p>	<p>PART NUMBER</p> <p style="text-align: center;">TYPICAL</p> <p style="text-align: center;">DRAWING NO.</p> <p style="text-align: center;">DW-010</p>	<p>REV. DATE</p> <p style="text-align: center;">-</p> <p style="text-align: center;">-</p> <p style="text-align: center;">-</p>				
<p>PAGE:</p> <p>2/4</p>	<p>DRAWN BY:</p> <p>B. BRATTEN</p>	<p>DWG. DATE</p> <p>JAN. 2014</p>	<p>JOB OR APP.#</p> <p style="text-align: center;">-</p>	<p>DEALER P.O.#</p> <p style="text-align: center;">-</p>	<p>DWG. SCALE</p> <p style="text-align: center;">1:24</p>	<p>REV. LEVEL(1-3)</p> <p style="text-align: center;">-</p>



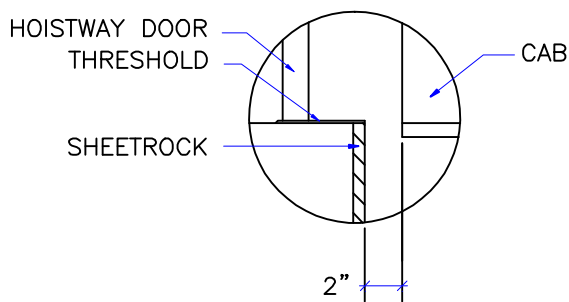
**SECTION A-A**

DWG VIEW		SECTION A-A		PART NUMBER		REV. DATE	
				TYPICAL		-	
		DRAWING TITLE		DRAWING NO.		-	
		DW 500 CODE 4 MR BELOW		DW-010		-	
PAGE:	DRAWN BY:	DWG. DATE	JOB OR APP.#	DEALER P.O.#	DWG. SCALE	REV. LEVEL(1-3)	
3/4	B. BRATTEN	JAN. 2014	-	-	1:24	-	



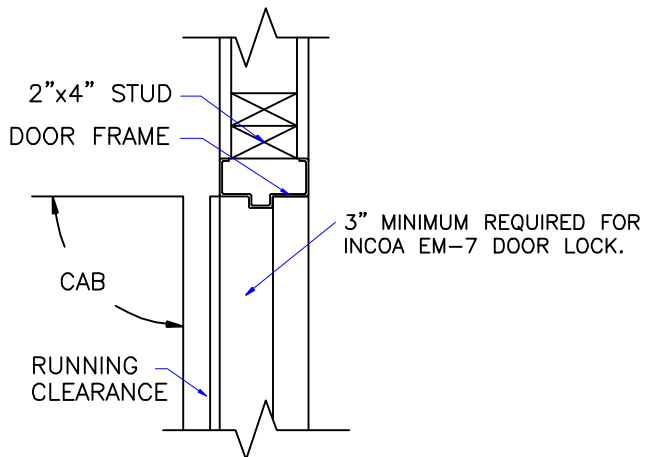
NOTE:  
WHEN STUD AND SHEETROCK CONSTRUCTION IS USED ON THE GUIDE RAIL SUPPORT WALL 4"x4" STUDDING IS NEEDED BEHIND THE 2"x12" PLANK.

RAIL DETAIL



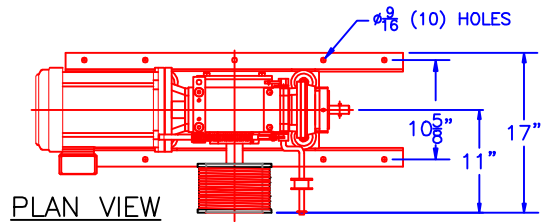
DOOR SILLS TO BE INSTALLED BY G.C. AFTER LIFT SUPPLIER HAS INSTALLED A RUNNING PLATFORM.

SILL DETAIL

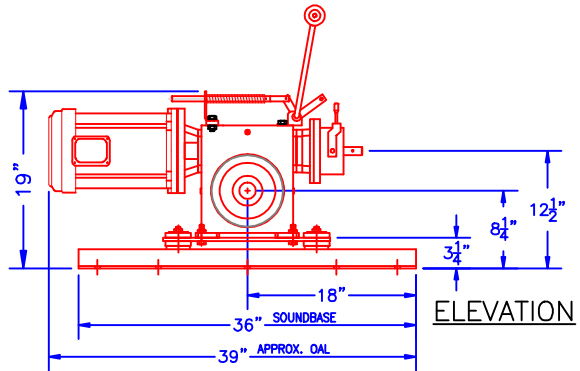


DOOR FRAME DETAIL

SEE "LOAD CAPACITY CALCULATOR" FOR OTHER POSSIBLE DW 500# CAB DIMENSIONS



PLAN VIEW



ELEVATION

1. MACHINE ROOM SIZE REQUIREMENTS MAY CHANGE WITH TRAVEL DISTANCE
2. MACHINE ROOM CAN BE LOCATED ABOVE OR BELOW HOISTWAY
3. SHEAVE COMBINATIONS WILL CHANGE WITH ALTERNATE MACHINE ROOM LOCATIONS

500# DUMBWAITER MACHINE DIMENSIONS

1. REACTIONS ON ALL SHEAVES AND MOUNTINGS  
STATIC = 1,100 LBS.  
IMPACT = 2,200 LBS.
2. RAIL FASTENING TO 2" x 12" PLANK  
#14 x 1 3/4" TYPE A S.M.S. RAIL IS PRE-DRILLED AT FACTORY.
3. BOLT FASTENING OF CAR TO TROLLEY  
1/2" - 13 x 2 1/2" SOCKET HD CAP SCREWS.

TECHNICAL DATA

DWG VIEW		PART NUMBER		REV. DATE		
DETAILS, DATA, CODES		TYPICAL		-		
DRAWING TITLE		DRAWING NO.		-		
DW 500 CODE 4 MR BELOW		DW-010		-		
PAGE:	DRAWN BY:	DWG. DATE	JOB OR APP.#	DEALER P.O.#	DWG. SCALE	REV. LEVEL(1-3)
4/4	B. BRATTEN	JAN. 2014	-	-	1:24	-

