

ORDER REFERENCE

PROJECT: 200# DUMBWAITER
MACHINE BELOW

TYPICAL DRAWING FOR REFERENCE ONLY.
NOT TO BE USED FOR CONSTRUCTION

SPECIFICATIONS

MODEL: DW-200 (COLLAPSIBLE GATE WITH SWING DOOR)

LANDINGS: 2

CODE(S): 4

CAPACITY: 200#

SPEED: 33 F.P.M.

SUSPENSION MEANS: 1 WIRE ROPE 5,400 LBS. EHS
STEEL 1/4" x 8 x 19 IWRC

CAR CONSTRUCTION: STAINLESS STEEL
OR PAINTED STEEL

NOTE: ALL MANUFACTURER SUPPLIED CAR AND EQUIPMENT OPTIONS ARE NOTED ON THE CONFIRMING ORDER SHEET.

DISCLAIMER: ONCE DRAWINGS HAVE BEEN APPROVED, SIGNED AND WITHIN 5 DAYS OF PRODUCTION, THE CUSTOMER WILL BEAR ALL RESPONSIBILITY AND LIABILITY OF FINISHED UNIT.


PLEASE REFER ANY QUESTION TO YOUR SALES REPRESENTATIVE

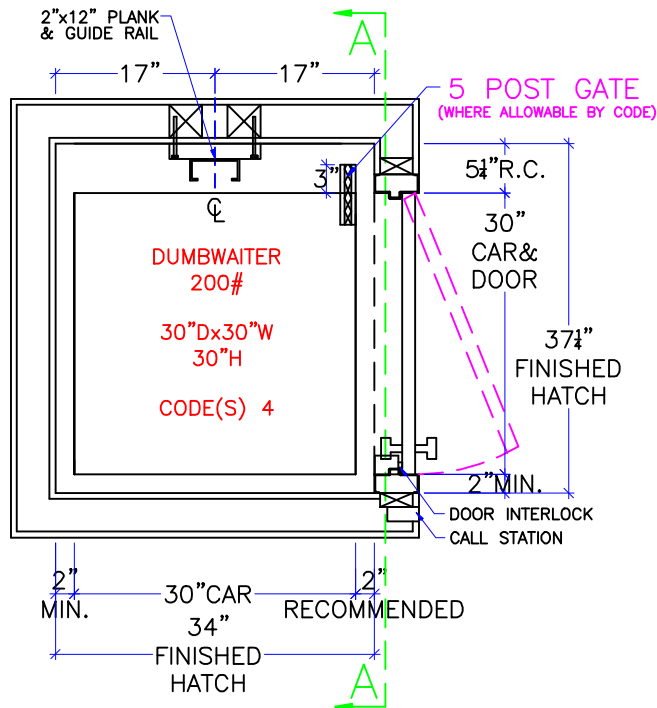
APPROVED

UNAPPROVED

SIGNATURE

DATE

| | | |
|---------------------------------------------------------------------------------------------------------|---------------------|-------------------|
| DWG VIEW | PART NUMBER | REV. DATE |
| COVER SHEET | TYPICAL | - |
|  DRAWING TITLE | DRAWING NO. | - |
| DW 200 CODE 4 MR BELOW | DW-004 | - |
| PAGE: | DRAWN BY: | DWG. DATE |
| 1/4 | B. BRATTEN | JAN. 2014 |
| JOB OR APP.# | DEALER P.O.# | DWG. SCALE |
| - | - | 1:24 |
| REV. LEVEL (1-3) | | - |



HOISTWAY PLAN

SEE "LOAD CAPACITY CALCULATOR"
FOR OTHER POSSIBLE
DW 200# CAB DIMENSIONS

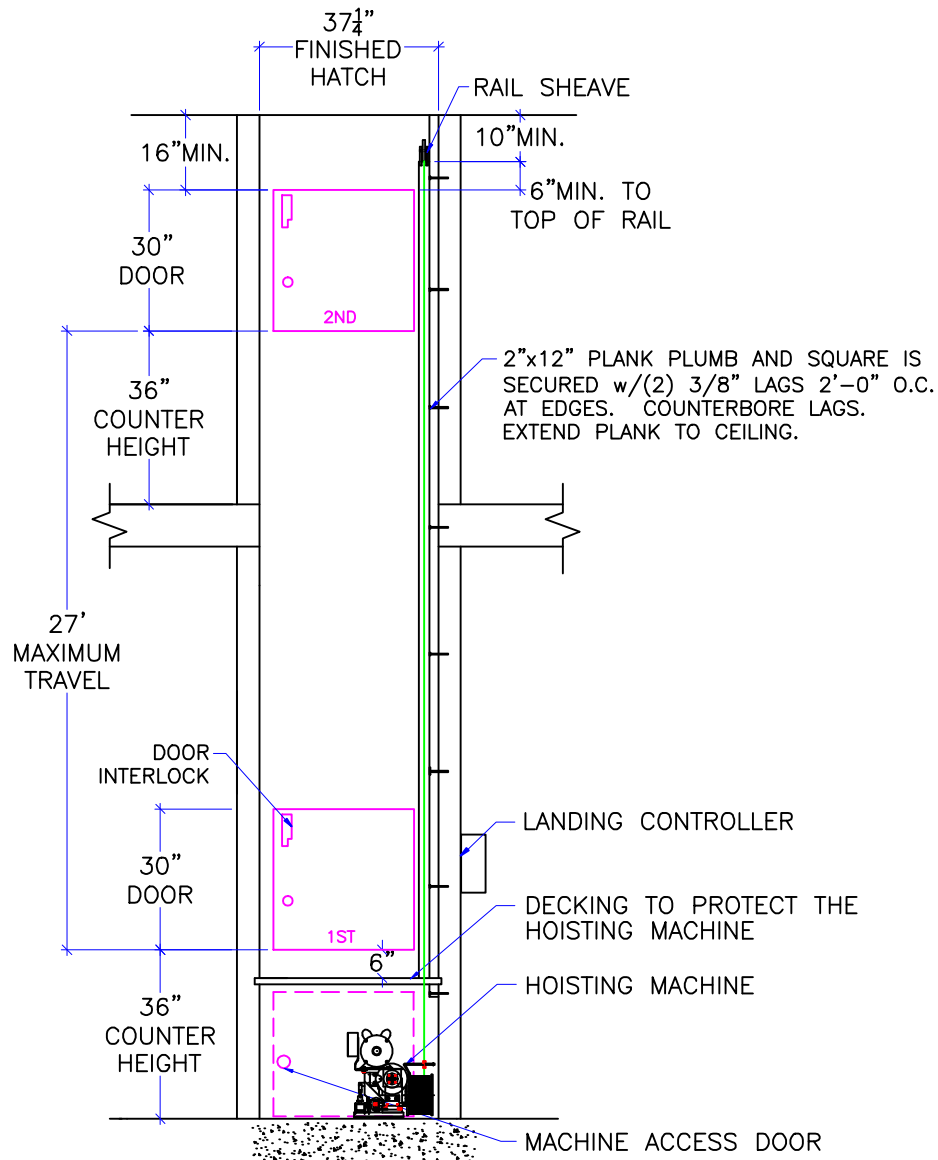
NOTE:
ALL HOISTWAY CONSTRUCTION MUST COMPLY WITH NATIONAL, STATE,
AND LOCAL CODES. HOISTWAY MUST BE PLUMB AND STRAIGHT FROM
TOP TO BOTTOM WITH NO PROJECTIONS INTO THE HOISTWAY.

NOTICE TO ELECTRICAL CONTRACTOR:

208V SERVICE REQUIRES A BUCK BOOST TRANSFORMER BY OTHERS

- ALL ELECTRICAL WIRING MUST BE DONE BY A JOURNEYMAN MECHANIC AND MUST MEET ALL NATIONAL, STATE, AND LOCAL CODES.
- BRING (3) #12 W/GND FROM RESIDENCE INCOMING POWER PANEL 20AMP BREAKER(240V, NEUTRAL, GROUND)TO THE MACHINE ROOM.
- BRING (2) #12 W/GND FROM RESIDENCE INCOMING POWER PANEL 20AMP GFI BREAKER(120V, NEUTRAL, GROUND)TO THE MACHINE ROOM.
- REQUIRED LOW VOLTAGE WIRING IS SUPPLIED BY MANUFACTURER. ALL EXTENSIONS ADDITIONS, ETC. SHALL BE DONE WITH THE SAME SIZE AND TYPE OF WIRE AS ORIGINALLY SUPPLIED BY THE MANUFACTURER.
- ALL MEANS FOR ACCESS TO EQUIPMENT SHALL BE PROVIDED WITH A LOCK. ALL SHAFT DOORS MUST BE INTERLOCKED.

| | | |
|----------------------------------------------------------------------------------------------------------|---------------------------------------------------------------|----------------------------------------------------------------------------------------------------------------|
| <p>DWG VIEW</p> <p style="text-align: center;">HOISTWAY LAYOUT</p> | <p>PART NUMBER</p> <p style="text-align: center;">TYPICAL</p> | <p>REV.DATE</p> <p style="text-align: center;">-</p> |
| <p style="margin-left: 20px;">DRAWING TITLE</p> <p style="margin-left: 20px;">DW 200 CODE 4 MR BELOW</p> | <p>DRAWING NO.</p> <p style="text-align: center;">DW-004</p> | <p style="text-align: center;">-</p> <p style="text-align: center;">-</p> <p style="text-align: center;">-</p> |
| <p>PAGE:</p> <p>2/4</p> | <p>DRAWN BY:</p> <p>B.BRATTEN</p> | <p>DWG. DATE</p> <p>JAN. 2014</p> |
| <p>JOB OR APP.#</p> <p style="text-align: center;">-</p> | <p>DEALER P.O.#</p> <p style="text-align: center;">-</p> | <p>DWG. SCALE</p> <p style="text-align: center;">1:24</p> |
| <p>REV.LEVEL(1-3)</p> <p style="text-align: center;">-</p> | | |

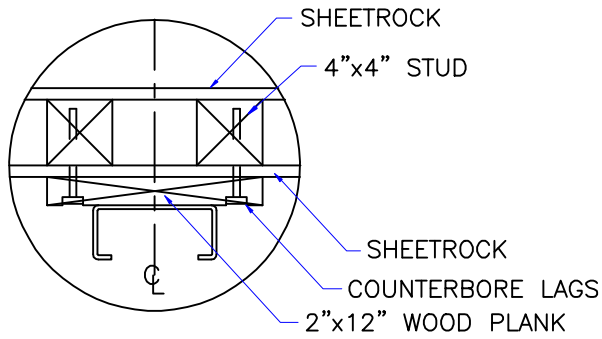


OTHER MACHINE LOCATIONS AVAILABLE

MINIMUM NECESSARY MACHINE SPACE WILL CHANGE BASED ON TRAVEL DISTANCE

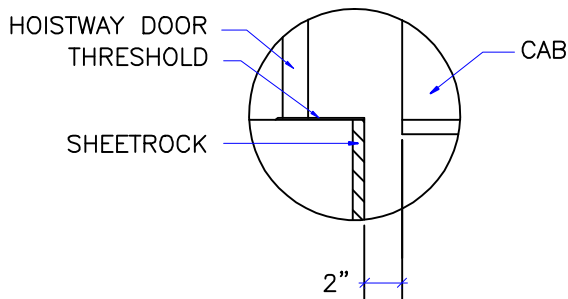
SECTION A-A

| | | | | | | | |
|----------|------------|------------------------|--------------|--------------|------------|-----------------|--|
| DWG VIEW | | SECTION A-A | | PART NUMBER | | REV. DATE | |
| | | | | TYPICAL | | - | |
| | | DRAWING TITLE | | DRAWING NO. | | - | |
| | | DW 200 CODE 4 MR BELOW | | DW-004 | | - | |
| PAGE: | DRAWN BY: | DWG. DATE | JOB OR APP.# | DEALER P.O.# | DWG. SCALE | REV. LEVEL(1-3) | |
| 3/4 | B. BRATTEN | JAN. 2014 | - | - | 1:24 | - | |



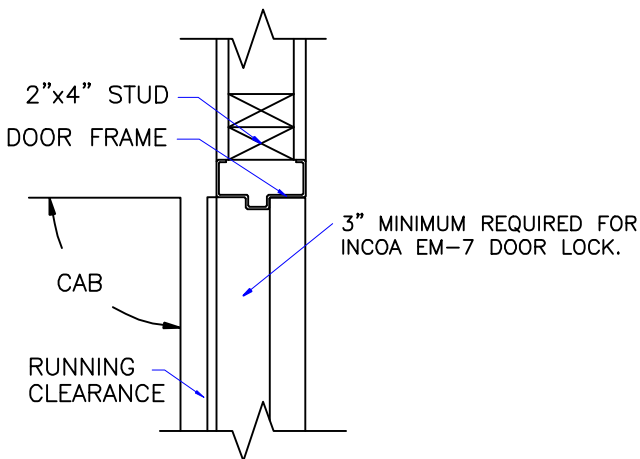
NOTE:
WHEN STUD AND SHEETROCK CONSTRUCTION IS USED ON THE GUIDE RAIL SUPPORT WALL 4"x4" STUDDING IS NEEDED BEHIND THE 2"x12" PLANK.

RAIL DETAIL



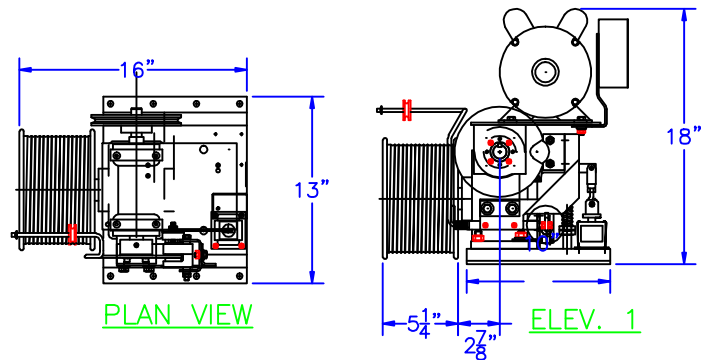
DOOR SILLS TO BE INSTALLED BY G.C. AFTER LIFT SUPPLIER HAS INSTALLED A RUNNING PLATFORM.

SILL DETAIL



DOOR FRAME DETAIL

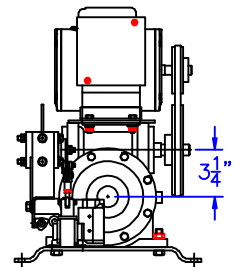
SEE "LOAD CAPACITY CALCULATOR" FOR OTHER POSSIBLE DW 200# CAB DIMENSIONS



1. MACHINE ROOM SIZE REQUIREMENTS MAY CHANGE WITH TRAVEL DISTANCE

2. MACHINE ROOM CAN BE LOCATED ABOVE OR BELOW HOISTWAY

3. SHEAVE COMBINATIONS WILL CHANGE WITH ALTERNATE MACHINE ROOM LOCATIONS



ELEV. 2

200# DUMBWAITER MACHINE DIMENSIONS

1. REACTIONS ON ALL SHEAVES AND MOUNTINGS
STATIC = 600 LBS.
IMPACT = 1,200 LBS.
2. RAIL FASTENING TO 2" x 12" PLANK
#14 x 1 3/4" TYPE A S.M.S. RAIL IS PRE-DRILLED AT FACTORY.
3. BOLT FASTENING OF CAR TO TROLLEY
1/2" - 13 x 2 1/2" SOCKET HD CAP SCREWS.

TECHNICAL DATA

DWG VIEW

DETAILS, DATA, CODES

PART NUMBER

TYPICAL

REV. DATE



DRAWING TITLE

DW 200 CODE 4 MR BELOW

DRAWING NO.

DW-004

-

-

-

PAGE:
4/4

DRAWN BY:
B. BRATTEN

DWG. DATE
JAN. 2014

JOB OR APP.#
-

DEALER P.O.#
-

DWG. SCALE
1:24

REV. LEVEL(1-3)
-