

## ORDER REFERENCE

**PROJECT:** 200# DUMBWAITER  
MACHINE ABOVE

TYPICAL DRAWING FOR REFERENCE ONLY.  
NOT TO BE USED FOR CONSTRUCTION

## SPECIFICATIONS

**MODEL:** DW-200 (COLLAPSIBLE GATE WITH SWING DOOR)

**LANDINGS:** 2

**CODE(S):** 1

**CAPACITY:** 200#

**SPEED:** 33 F.P.M.

**SUSPENSION MEANS:** 1 WIRE ROPE 5,400 LBS. EHS  
STEEL 1/4" x 8 x 19 IWRC

**CAR CONSTRUCTION:** STAINLESS STEEL  
OR PAINTED STEEL

NOTE: ALL MANUFACTURER SUPPLIED CAR AND EQUIPMENT OPTIONS ARE NOTED ON THE CONFIRMING ORDER SHEET.

DISCLAIMER: ONCE DRAWINGS HAVE BEEN APPROVED, SIGNED AND WITHIN 5 DAYS OF PRODUCTION, THE CUSTOMER WILL BEAR ALL RESPONSIBILITY AND LIABILITY OF FINISHED UNIT.


PLEASE REFER ANY QUESTION TO YOUR SALES REPRESENTATIVE

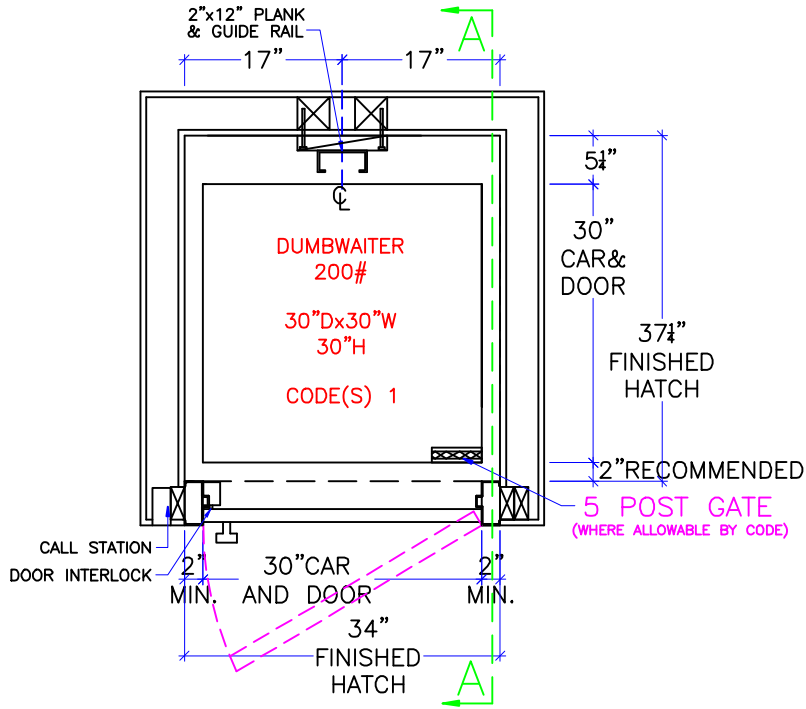
APPROVED

UNAPPROVED

\_\_\_\_\_  
SIGNATURE

\_\_\_\_\_  
DATE

<b>DWG VIEW</b>	<b>PART NUMBER</b>	<b>REV. DATE</b>
COVER SHEET	TYPICAL	-
 <b>DRAWING TITLE</b>	<b>DRAWING NO.</b>	-
DW 200 CODE 1 MR ABOVE	DW-003	-
<b>PAGE:</b>	<b>DRAWN BY:</b>	<b>DWG. DATE</b>
1/4	B. BRATTEN	JAN. 2014
<b>JOB OR APP.#</b>	<b>DEALER P.O.#</b>	<b>DWG. SCALE</b>
-	-	1:24
<b>REV. LEVEL (1-3)</b>		-



## HOISTWAY PLAN

SEE "LOAD CAPACITY CALCULATOR"  
FOR OTHER POSSIBLE  
DW 200# CAB DIMENSIONS

NOTE:  
ALL HOISTWAY CONSTRUCTION MUST COMPLY WITH NATIONAL, STATE,  
AND LOCAL CODES. HOISTWAY MUST BE PLUMB AND STRAIGHT FROM  
TOP TO BOTTOM WITH NO PROJECTIONS INTO THE HOISTWAY.

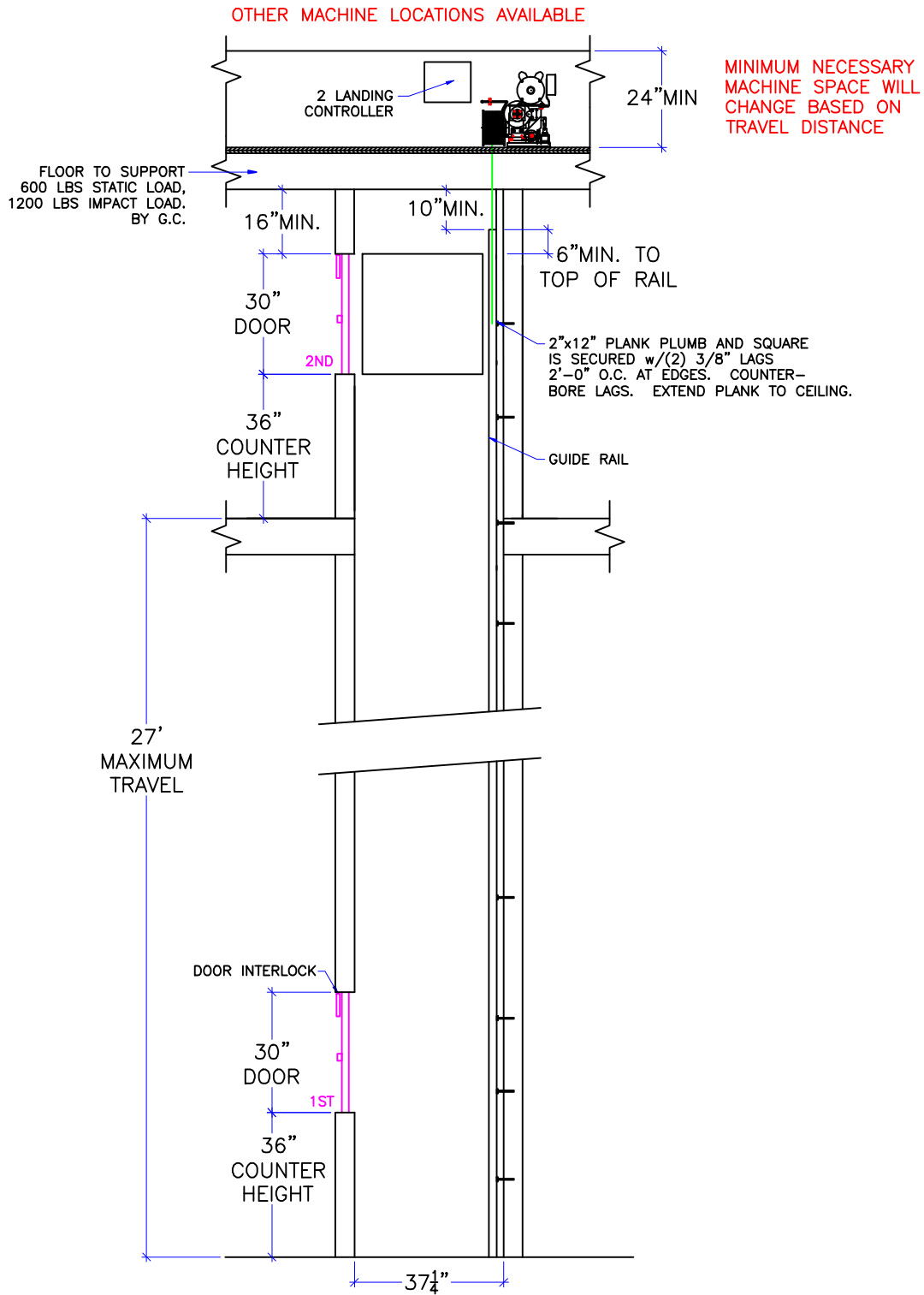
**NOTICE TO ELECTRICAL CONTRACTOR:**

\*\*208V SERVICE REQUIRES A BUCK BOOST TRANSFORMER BY OTHERS\*\*

- ALL ELECTRICAL WIRING MUST BE DONE BY A JOURNEYMAN MECHANIC AND MUST MEET ALL NATIONAL, STATE, AND LOCAL CODES.
- BRING (3) #12 W/GND FROM RESIDENCE INCOMING POWER PANEL 20AMP BREAKER(240V, NEUTRAL, GROUND) TO THE MACHINE ROOM.
- BRING (2) #12 W/GND FROM RESIDENCE INCOMING POWER PANEL 20AMP GFI BREAKER(120V, NEUTRAL, GROUND) TO THE MACHINE ROOM.
- REQUIRED LOW VOTAGE WIRING IS SUPPLIED BY MANUFACTURER. ALL EXTENSIONS ADDITIONS, ETC. SHALL BE DONE WITH THE SAME SIZE AND TYPE OF WIRE AS ORIGINALLY SUPPLIED BY THE MANUFACTURER.
- ALL MEANS FOR ACCESS TO EQUIPMENT SHALL BE PROVIDED WITH A LOCK. ALL SHAFT DOORS MUST BE INTERLOCKED.

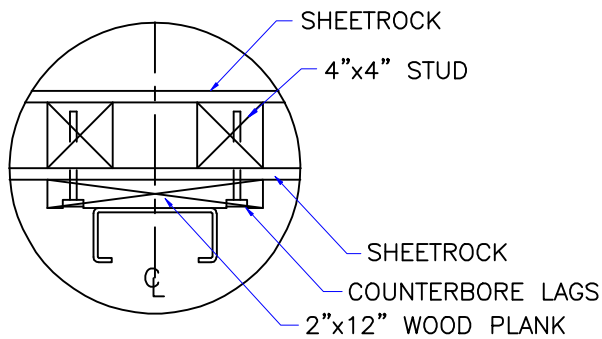
<b>DWG VIEW</b> HOISTWAY LAYOUT	<b>PART NUMBER</b> TYPICAL	<b>REV. DATE</b>
<b>DRAWING TITLE</b> DW 200 CODE 1 MR ABOVE	<b>DRAWING NO.</b> DW-003	-
<b>PAGE:</b> 2/4	<b>DRAWN BY:</b> B. BRATTEN	<b>REV. LEVEL (1-3)</b> -
<b>DWG. DATE</b> JAN. 2014	<b>JOB OR APP.#</b> -	<b>DWG. SCALE</b> 1:24
<b>DEALER P.O.#</b> -	<b>DWG. SCALE</b> 1:24	<b>REV. LEVEL (1-3)</b> -





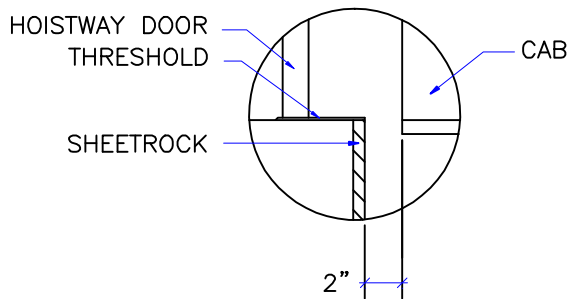
SECTION A-A

DWG VIEW		SECTION VIEWS		PART NUMBER		REV. DATE	
				TYPICAL		-	
		DRAWING TITLE		DRAWING NO.		-	
		DW 200 CODE 1 MR ABOVE		DW-003		-	
PAGE:	DRAWN BY:	DWG. DATE	JOB OR APP.#	DEALER P.O.#	DWG. SCALE	REV. LEVEL(1-3)	
3/4	B. BRATTEN	JAN. 2014	-	-	1:24	-	



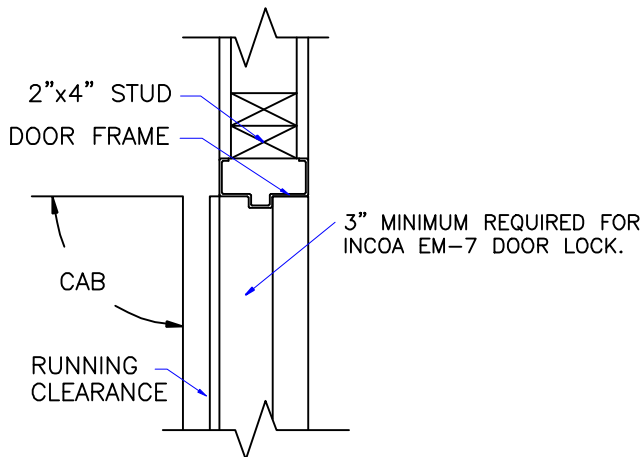
NOTE:  
WHEN STUD AND SHEETROCK CONSTRUCTION IS USED ON THE GUIDE RAIL SUPPORT WALL 4"x4" STUDDING IS NEEDED BEHIND THE 2"x12" PLANK.

RAIL DETAIL



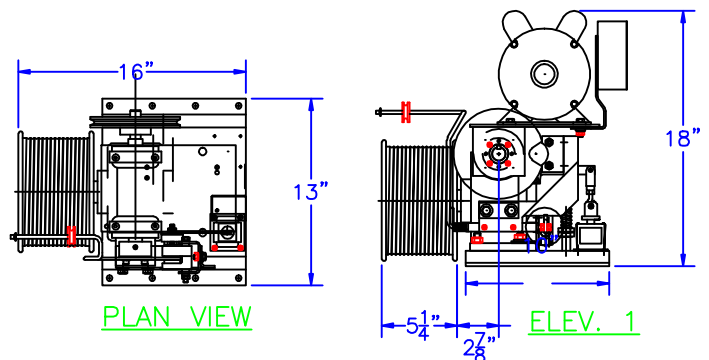
DOOR SILLS TO BE INSTALLED BY G.C. AFTER LIFT SUPPLIER HAS INSTALLED A RUNNING PLATFORM.

SILL DETAIL



DOOR FRAME DETAIL

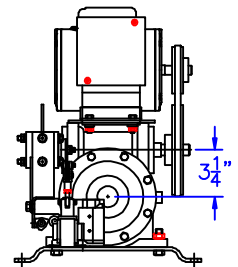
SEE "LOAD CAPACITY CALCULATOR" FOR OTHER POSSIBLE DW 200# CAB DIMENSIONS



1. MACHINE ROOM SIZE REQUIREMENTS MAY CHANGE WITH TRAVEL DISTANCE

2. MACHINE ROOM CAN BE LOCATED ABOVE OR BELOW HOISTWAY

3. SHEAVE COMBINATIONS WILL CHANGE WITH ALTERNATE MACHINE ROOM LOCATIONS



ELEV. 2

200# DUMBWAITER MACHINE DIMENSIONS

1. REACTIONS ON ALL SHEAVES AND MOUNTINGS  
STATIC = 600 LBS.  
IMPACT = 1,200 LBS.
2. RAIL FASTENING TO 2" x 12" PLANK  
#14 x 1 3/4" TYPE A S.M.S. RAIL IS PRE-DRILLED AT FACTORY.
3. BOLT FASTENING OF CAR TO TROLLEY  
1/2" - 13 x 2 1/2" SOCKET HD CAP SCREWS.

TECHNICAL DATA

DWG VIEW		PART NUMBER		REV. DATE		
DETAILS, DATA, CODES		TYPICAL		-		
DRAWING TITLE		DRAWING NO.		-		
DW 200 CODE 1 MR ABOVE		DW-003		-		
PAGE:	DRAWN BY:	DWG. DATE	JOB OR APP.#	DEALER P.O.#	DWG. SCALE	REV. LEVEL(1-3)
4/4	B. BRATTEN	JAN. 2014	-	-	1:24	-

